

## Monoclonal Antibody to CD10 / Neprilysin - FITC

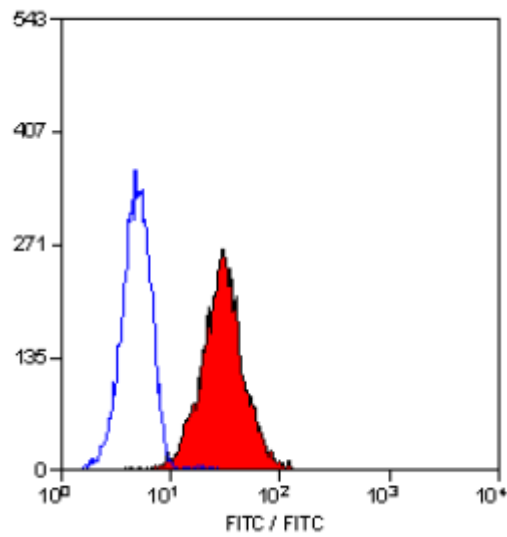
<b>Alternate names:</b>	Atriopeptidase, CALLA, Common acute lymphocytic leukemia antigen, EPN, Enkephalinase, MME, NEP, Neutral endopeptidase, Neutral endopeptidase 24.11
<b>Catalog No.:</b>	SM1525FT
<b>Quantity:</b>	25 µg
<b>Concentration:</b>	0.1 mg/ml
<b>Background:</b>	CD10 is a 100kD glycoprotein expressed by acute lymphoblastic leukaemia cells and by peripheral blood granulocytes. CD10 is also known as the Common Acute Lymphoblastic Leukaemia Antigen (CALLA).
<b>Uniprot ID:</b>	<a href="#">P08473</a>
<b>NCBI:</b>	<a href="#">NP_000893.2</a>
<b>GeneID:</b>	<a href="#">4311</a>
<b>Host / Isotype:</b>	Mouse / IgG1
<b>Clone:</b>	SN5c
<b>Immunogen:</b>	Partially purified cell membrane antigens from fresh leukemia cells. Spleen cells from immunised BALB/c mice were fused with cells of the mouse PS/NS1/1-Ag4-1 myeloma cell line.
<b>Format:</b>	<b>State:</b> Liquid purified IgG fraction. <b>Purification:</b> Affinity Chromatography on Protein G. <b>Buffer System:</b> PBS, pH 7.4 containing 1% BSA as stabilizer and 0.09% Sodium Azide as preservative. <b>Label:</b> FITC – Fluorescein Isothiocyanate Isomer 1
<b>Applications:</b>	<b>Flow Cytometry:</b> Use 10 µl of neat antibody to label 10e6 cells in 100 µl. Other applications not tested. Optimal dilutions are dependent on conditions and should be determined by the user.
<b>Specificity:</b>	This antibody recognises the CD10 cell surface antigen. <b>Species:</b> Human. Other species not tested.
<b>Storage:</b>	Store the antibody undiluted at 2-8°C for one month or (in aliquots) at -20°C for longer. Avoid repeated freezing and thawing. This product is photosensitive and should be protected from light. Shelf life: one year from despatch.
<b>General References:</b>	1. Matsuzaki, H. et al. (1987) Unique epitopes of common acute lymphoblastic leukemia antigen detected by new monoclonal antibodies. <i>Cancer Res.</i> 47: 2160-2166. 2. Biddle, W.C. et al. (1989) <i>in vitro</i> and <i>in vivo</i> cytotoxic activity of anti-human leukemia monoclonal antibodies SN5c and SN6 daunorubicin conjugates. <i>Leuk. Res.</i> 13: 699-707.

**For research and in vitro use only. Not for diagnostic or therapeutic work.**

Material Safety Datasheets are available at [www.acris-antibodies.com](http://www.acris-antibodies.com) or on request.

Antibody Hotline - Technical Questions - Antibody Location Service  
Free Call: 0800-2274746 (Germany only) - [www.acris-antibodies.com](http://www.acris-antibodies.com)

Pictures:



Staining of Human peripheral blood granulocytes with Mouse Anti Human CD10-FITC (SM1525F/FT).

**For research and in vitro use only. Not for diagnostic or therapeutic work.**

Material Safety Datasheets are available at [www.acris-antibodies.com](http://www.acris-antibodies.com) or on request.

Antibody Hotline - Technical Questions - Antibody Location Service  
Free Call: 0800-2274746 (Germany only) - [www.acris-antibodies.com](http://www.acris-antibodies.com)