

Monoclonal Antibody to CD10 / Neprilysin - FITC

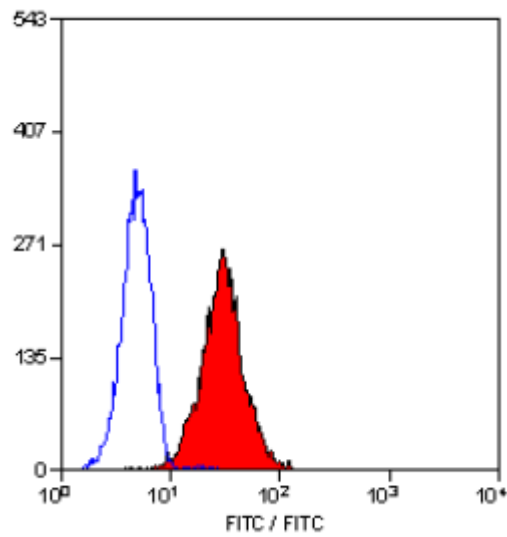
Alternate names:	Atriopeptidase, CALLA, Common acute lymphocytic leukemia antigen, EPN, Enkephalinase, MME, NEP, Neutral endopeptidase, Neutral endopeptidase 24.11
Catalog No.:	SM1525F
Quantity:	0.1 mg
Concentration:	0.1 mg/ml
Background:	CD10 is a 100kD glycoprotein expressed by acute lymphoblastic leukaemia cells and by peripheral blood granulocytes. CD10 is also known as the Common Acute Lymphoblastic Leukaemia Antigen (CALLA).
Uniprot ID:	P08473
NCBI:	NP_000893.2
GeneID:	4311
Host / Isotype:	Mouse / IgG1
Clone:	SN5c
Immunogen:	Partially purified cell membrane antigens from fresh leukemia cells. Spleen cells from immunised BALB/c mice were fused with cells of the mouse PS/NS1/1-Ag4-1 myeloma cell line.
Format:	State: Liquid purified IgG fraction. Purification: Affinity Chromatography on Protein G. Buffer System: PBS, pH 7.4 containing 1% BSA as stabilizer and 0.09% Sodium Azide as preservative. Label: FITC – Fluorescein Isothiocyanate Isomer 1
Applications:	Flow Cytometry: Use 10 µl of neat antibody to label 10e6 cells in 100 µl. Other applications not tested. Optimal dilutions are dependent on conditions and should be determined by the user.
Specificity:	This antibody recognises the CD10 cell surface antigen. Species: Human. Other species not tested.
Storage:	Store the antibody undiluted at 2-8°C for one month or (in aliquots) at -20°C for longer. Avoid repeated freezing and thawing. This product is photosensitive and should be protected from light. Shelf life: one year from despatch.
General References:	1. Matsuzaki, H. et al. (1987) Unique epitopes of common acute lymphoblastic leukemia antigen detected by new monoclonal antibodies. <i>Cancer Res.</i> 47: 2160-2166. 2. Biddle, W.C. et al. (1989) <i>in vitro</i> and <i>in vivo</i> cytotoxic activity of anti-human leukemia monoclonal antibodies SN5c and SN6 daunorubicin conjugates. <i>Leuk. Res.</i> 13: 699-707.

For research and in vitro use only. Not for diagnostic or therapeutic work.

Material Safety Datasheets are available at www.acris-antibodies.com or on request.

Antibody Hotline - Technical Questions - Antibody Location Service
Free Call: 0800-2274746 (Germany only) - www.acris-antibodies.com

Pictures:



Staining of Human peripheral blood granulocytes with Mouse Anti Human CD10-FITC (SM1525F/FT).

For research and in vitro use only. Not for diagnostic or therapeutic work.

Material Safety Datasheets are available at www.acris-antibodies.com or on request.

Antibody Hotline - Technical Questions - Antibody Location Service
Free Call: 0800-2274746 (Germany only) - www.acris-antibodies.com