

Monoclonal Antibody to CD235a / GYPA - PE

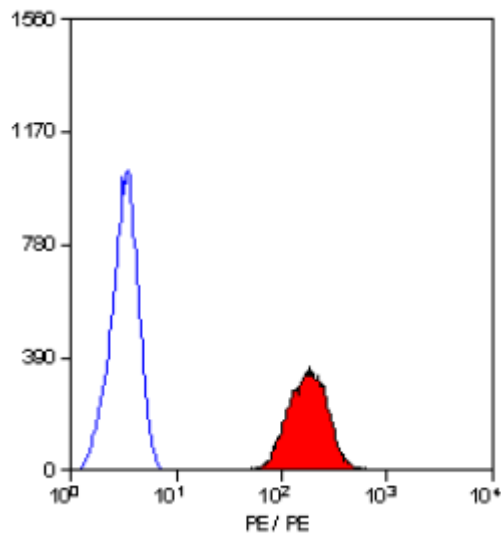
Alternate names:	GPA, Glycophorin-A, MN sialoglycoprotein, PAS-2, Sialoglycoprotein alpha
Catalog No.:	SM1473RT
Quantity:	25 Tests
Concentration:	0.1 mg/ml
Background:	CD235a is a major sialoglycoprotein of the human erythrocyte membrane.
Uniprot ID:	P02724
NCBI:	NP_002090.4
GeneID:	2993
Host / Isotype:	Rat / IgG2b
Clone:	YTH89.1
Immunogen:	Spleen cells from immunised DA rats were fused with cells of the Y3/Ag.1.2.3.
Format:	State: Lyophilized purified IgG fraction. Buffer System: PBS containing 0.09% Sodium Azide as preservative and 1% BSA as stabilizer. Label: PE – R. Phycoerythrin (RPE) Reconstitution: Restore with 1 ml distilled water.
Applications:	Flow Cytometry: Neat-1/10; Use 10µl of the suggested working dilution to label 10e6 cells in 100µl. Other applications not tested. Optimal dilutions are dependent on conditions and should be determined by the user.
Specificity:	This antibody recognises glycophorin A (CD235a). Species: Human. Other species not tested.
Storage:	Prior to and following reconstitution store the antibody undiluted at 2-8°C. DO NOT FREEZE! This product is photosensitive and should be protected from light. Shelf life: one year from despatch.
General References:	1. Outram, S. et al. (1988) Erythromyeloid lineage fidelity is conserved in erythroleukaemia. Leuk. Res. 12: 651-7. 2. Jokiranta, T.S. Meri, S. (1993) Biotinylation of monoclonal antibodies prevents their ability to activate the classical pathway of complement. J. Immunol. 15: 2124-31.

For research and in vitro use only. Not for diagnostic or therapeutic work.

Material Safety Datasheets are available at www.acris-antibodies.com or on request.

Antibody Hotline - Technical Questions - Antibody Location Service
Free Call: 0800-2274746 (Germany only) - www.acris-antibodies.com

Pictures:



Staining of human peripheral blood erythrocytes with Rat Anti Human CD235a-RPE (SM1473R/RT).

For research and in vitro use only. Not for diagnostic or therapeutic work.

Material Safety Datasheets are available at www.acris-antibodies.com or on request.

Antibody Hotline - Technical Questions - Antibody Location Service
Free Call: 0800-2274746 (Germany only) - www.acris-antibodies.com