

Monoclonal Antibody to CD235a / GYPA - PE

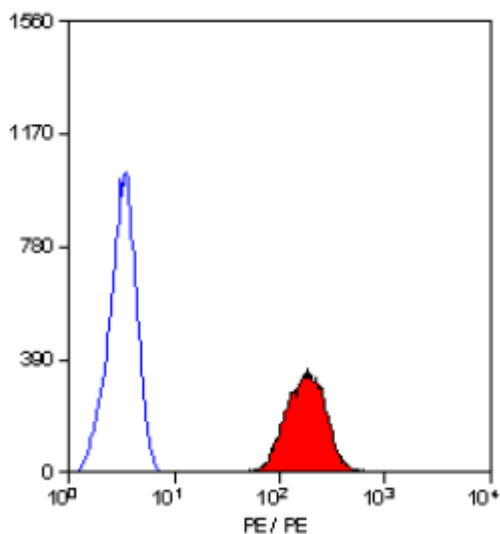
Alternate names:	GPA, Glycophorin-A, MN sialoglycoprotein, PAS-2, Sialoglycoprotein alpha
Catalog No.:	SM1473R
Quantity:	100 Tests
Concentration:	0.1 mg/ml
Background:	CD235a is a major sialoglycoprotein of the human erythrocyte membrane.
Uniprot ID:	P02724
NCBI:	NP_002090.4
GeneID:	2993
Host / Isotype:	Rat / IgG2b
Clone:	YTH89.1
Immunogen:	Spleen cells from immunised DA rats were fused with cells of the Y3/Ag.1.2.3.
Format:	<p>State: Lyophilized purified IgG fraction.</p> <p>Buffer System: PBS containing 0.09% Sodium Azide as preservative and 1% BSA as stabilizer.</p> <p>Label: PE – R. Phycoerythrin (RPE)</p> <p>Reconstitution: Restore with 1 ml distilled water.</p>
Applications:	<p>Flow Cytometry: Neat-1/10; Use 10µl of the suggested working dilution to label 10e6 cells in 100µl.</p> <p>Other applications not tested. Optimal dilutions are dependent on conditions and should be determined by the user.</p>
Specificity:	<p>This antibody recognises glycophorin A (CD235a).</p> <p>Species: Human.</p> <p>Other species not tested.</p>
Storage:	<p>Prior to and following reconstitution store the antibody undiluted at 2-8°C.</p> <p>DO NOT FREEZE!</p> <p>This product is photosensitive and should be protected from light.</p> <p>Shelf life: one year from despatch.</p>
General References:	<p>1. Outram, S. et al. (1988) Erythromyeloid lineage fidelity is conserved in erythroleukaemia. Leuk. Res. 12: 651-7.</p> <p>2. Jokiranta, T.S. Meri, S. (1993) Biotinylation of monoclonal antibodies prevents their ability to activate the classical pathway of complement. J. Immunol. 15: 2124-31.</p>

For research and in vitro use only. Not for diagnostic or therapeutic work.

Material Safety Datasheets are available at www.acris-antibodies.com or on request.

Antibody Hotline - Technical Questions - Antibody Location Service
Free Call: 0800-2274746 (Germany only) - www.acris-antibodies.com

Pictures:



Staining of human peripheral blood erythrocytes with Rat Anti Human CD235a-RPE (SM1473R/RT).

For research and in vitro use only. Not for diagnostic or therapeutic work.

Material Safety Datasheets are available at www.acris-antibodies.com or on request.

Antibody Hotline - Technical Questions - Antibody Location Service
Free Call: 0800-2274746 (Germany only) - www.acris-antibodies.com