

Monoclonal Antibody to IFNG / Interferon gamma - FITC

Alternate names:	IFN-gamma, gamma IFN
Catalog No.:	SM1326F
Quantity:	0.1 mg
Concentration:	0.1 mg/ml
Background:	Interferon gamma is mainly produced by T lymphocytes and NK cells. It is a pleiotropic cytokine involved in the regulation of nearly all phases of immune and inflammatory responses, including the activation, growth and differentiation of T cell, B cells, macrophages, NK cells and other cell types such as endothelial cells and fibroblasts. It has weak antiviral and antiproliferative activity, and potentiates the antiviral and anti tumor effects of IFN alpha / beta (type I interferon). It is upregulated by IL2, FGF basic, EGF and downregulated by vitamin D3 or DMN. Labile at pH 2.
Uniprot ID:	P01579
NCBI:	9606
Host / Isotype:	Mouse / IgG1
Clone:	B27
Immunogen:	Recombinant human IFN gamma.
Format:	State: Liquid purified IgG Purification: Affinity chromatography on Protein G Buffer System: PBS, pH7.4 containing 0.09% Sodium Azide and 1% Bovine Serum Albumin Label: FITC – Fluorescein Isothiocyanate Isomer 1
Applications:	Flow Cytometry: Neat - 1/10; Use 10µl of the suggested working dilution to label 10e6 cells in 100µl; Membrane permeabilisation is required for this application. Other applications not tested. Optimal dilutions are dependent on conditions and should be determined by the user.
Specificity:	This antibody is specific for interferon gamma (IFN gamma). IFN gamma is a regulatory cytokine, which is produced by activated natural killer cells and a population of T-lymphocytes. Clone B27 is reported to neutralise the antiviral activity of human IFN gamma. We recommends the use of SM1326A for this purpose. Species: Human, Monkey, Rhesus Monkey. Other species not tested.
Storage:	Store the antibody undiluted at 2-8°C for one month or (in aliquots) at -20°C for longer. Avoid repeated freezing and thawing. This product is photosensitive and should be protected from light. Shelf life: one year from despatch.

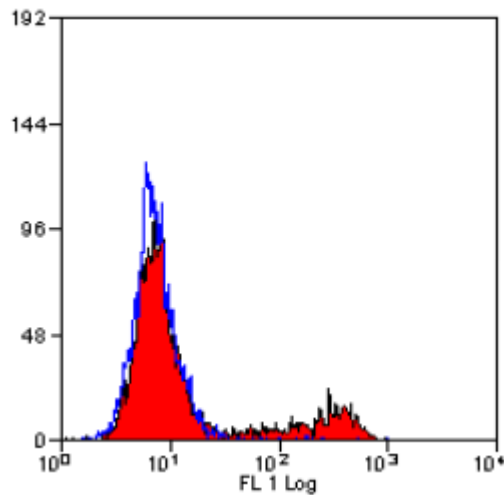
For research and in vitro use only. Not for diagnostic or therapeutic work.

Material Safety Datasheets are available at www.acris-antibodies.com or on request.

Antibody Hotline - Technical Questions - Antibody Location Service
Free Call: 0800-2274746 (Germany only) - www.acris-antibodies.com

- General References:**
1. Favre. C. et al. (1989) Epitope mapping of recombinant human gamma interferon using monoclonal antibodies. *Mol. Immunol.* 26:17-25.
 2. Abrams. J. et al. (1992) Strategies of anti-cytokine monoclonal antibody development. *Immunol. Rev.* 127:5-24.
 3. Palliard. X. et al. (1988) Simultaneous production of IL-2, IL-4, and IFN gamma by activated human CD4+ and CD8+ T cell clones. *J. Immunol.* 141:849-855.
 4. Baig. J. et al. (2002) Elicitation of Simian Immunodeficiency virus-specific cytotoxic T lymphocytes in mucosal compartments of rhesus monkeys by systemic vaccination. *J. Virol.* 76:11484-11490.

Pictures:



Staining of activated human peripheral blood lymphocytes with MOUSE ANTI HUMAN INTERFERON GAMMA:FITC (SM1326F)

For research and in vitro use only. Not for diagnostic or therapeutic work.

Material Safety Datasheets are available at www.acris-antibodies.com or on request.

Antibody Hotline - Technical Questions - Antibody Location Service
Free Call: 0800-2274746 (Germany only) - www.acris-antibodies.com