

## Monoclonal Antibody to CD105 / Endoglin - PE

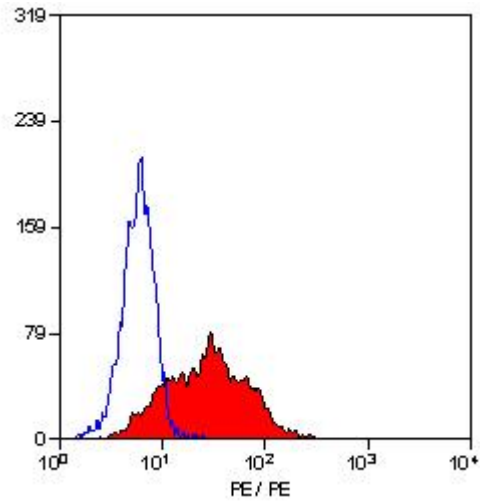
<b>Alternate names:</b>	END, ENG, HHT1, ORW, ORW1
<b>Catalog No.:</b>	SM1177RT
<b>Quantity:</b>	25 Tests
<b>Background:</b>	CD105 or Endoglin is a Type I transmembrane protein, which is highly expressed on human vascular endothelial cells. It exists on an O- and N-glycosylated homodimer. Up regulation of endoglin expression has been demonstrated in tumor vasculature and proliferating cells, suggesting that it is a proliferation associated endothelial marker. CD105 binds to TGF beta 1 and 3 with high affinity but not to TGF beta 2.
<b>Uniprot ID:</b>	<a href="#">P17813</a>
<b>NCBI:</b>	<a href="#">9606</a>
<b>Host / Isotype:</b>	Mouse / IgG1
<b>Clone:</b>	SN6
<b>Immunogen:</b>	Partially purified cell membrane antigens from fresh leukaemia cells
<b>Format:</b>	<b>State:</b> Lyophilized purified IgG fraction. <b>Purification:</b> Affinity Chromatography on Protein G. <b>Buffer System:</b> PBS, pH 7.4, containing 0.09% sodium azide as preservative and 1% BSA as stabilizer. <b>Label:</b> PE – R. Phycoerythrin (RPE) <b>Reconstitution:</b> Restore with 1.0 ml distilled water.
<b>Applications:</b>	<b>Flow Cytometry:</b> Use 10 µl of neat antibody to label 10e6 cells in 100 µl. Other applications not tested. Optimal dilutions are dependent on conditions and should be determined by the user.
<b>Specificity:</b>	This antibody recognises the human CD105 cell surface antigen, a glycoprotein homodimer of 95 kD subunits. <b>Species:</b> Human. Other species not tested.
<b>Storage:</b>	Prior to and following reconstitution store the antibody undiluted at 2-8°C. <b>DO NOT FREEZE!</b> This Product is photosensitive and should be protected from light. Shelf life: one year from despatch.
<b>General References:</b>	1. Haruta, Y. and Seon, B.K. (1986) Distinct human leukemia-associated cell surface glycoprotein GP160 defined by monoclonal antibody SN6 P.N.A.S. USA 83: 7898-7902.

**For research and in vitro use only. Not for diagnostic or therapeutic work.**

Material Safety Datasheets are available at [www.acris-antibodies.com](http://www.acris-antibodies.com) or on request.

Antibody Hotline - Technical Questions - Antibody Location Service  
Free Call: 0800-2274746 (Germany only) - [www.acris-antibodies.com](http://www.acris-antibodies.com)

Pictures:



Staining of KG1 cells with Mouse anti Human CD105 PE (SM1177R/RT).

**For research and in vitro use only. Not for diagnostic or therapeutic work.**

Material Safety Datasheets are available at [www.acris-antibodies.com](http://www.acris-antibodies.com) or on request.

Antibody Hotline - Technical Questions - Antibody Location Service  
Free Call: 0800-2274746 (Germany only) - [www.acris-antibodies.com](http://www.acris-antibodies.com)