

Monoclonal Antibody to CD105 / Endoglin - PE

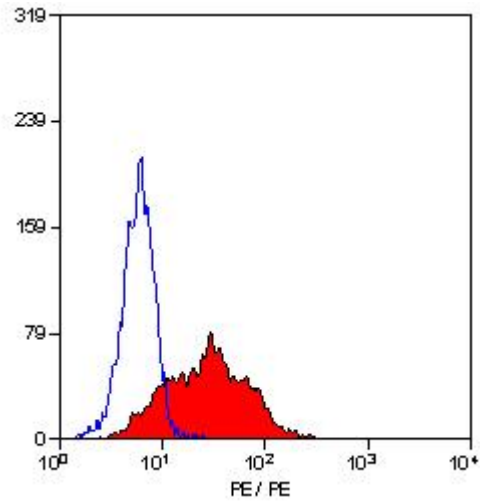
Alternate names:	END, ENG, HHT1, ORW, ORW1
Catalog No.:	SM1177R
Quantity:	100 Tests
Background:	CD105 or Endoglin is a Type I transmembrane protein, which is highly expressed on human vascular endothelial cells. It exists on an O- and N-glycosylated homodimer. Up regulation of endoglin expression has been demonstrated in tumor vasculature and proliferating cells, suggesting that it is a proliferation associated endothelial marker. CD105 binds to TGF beta 1 and 3 with high affinity but not to TGF beta 2.
Uniprot ID:	P17813
NCBI:	9606
Host / Isotype:	Mouse / IgG1
Clone:	SN6
Immunogen:	Partially purified cell membrane antigens from fresh leukaemia cells
Format:	State: Lyophilized purified IgG fraction. Purification: Affinity Chromatography on Protein G. Buffer System: PBS, pH 7.4, containing 0.09% sodium azide as preservative and 1% BSA as stabilizer. Label: PE – R. Phycoerythrin (RPE) Reconstitution: Restore with 1.0 ml distilled water.
Applications:	Flow Cytometry: Use 10 µl of neat antibody to label 10e6 cells in 100 µl. Other applications not tested. Optimal dilutions are dependent on conditions and should be determined by the user.
Specificity:	This antibody recognises the human CD105 cell surface antigen, a glycoprotein homodimer of 95 kD subunits. Species: Human. Other species not tested.
Storage:	Prior to and following reconstitution store the antibody undiluted at 2-8°C. DO NOT FREEZE! This Product is photosensitive and should be protected from light. Shelf life: one year from despatch.
General References:	1. Haruta, Y. and Seon, B.K. (1986) Distinct human leukemia-associated cell surface glycoprotein GP160 defined by monoclonal antibody SN6 P.N.A.S. USA 83: 7898-7902.

For research and in vitro use only. Not for diagnostic or therapeutic work.

Material Safety Datasheets are available at www.acris-antibodies.com or on request.

Antibody Hotline - Technical Questions - Antibody Location Service
Free Call: 0800-2274746 (Germany only) - www.acris-antibodies.com

Pictures:



Staining of KG1 cells with Mouse anti Human CD105 PE (SM1177R/RT).

For research and in vitro use only. Not for diagnostic or therapeutic work.

Material Safety Datasheets are available at www.acris-antibodies.com or on request.

Antibody Hotline - Technical Questions - Antibody Location Service
Free Call: 0800-2274746 (Germany only) - www.acris-antibodies.com