

## Monoclonal Antibody to CD105 / Endoglin - Purified

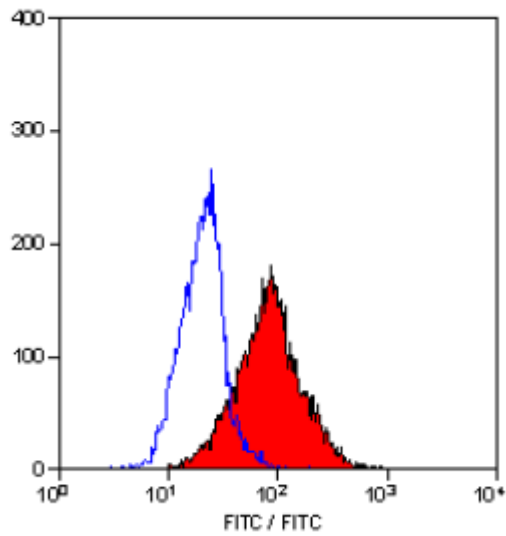
<b>Alternate names:</b>	END, ENG, HHT1, ORW, ORW1
<b>Catalog No.:</b>	SM1177P
<b>Quantity:</b>	0.2 mg
<b>Concentration:</b>	1.0 mg/ml
<b>Background:</b>	CD105 is a glycoprotein homodimer of 95kD subunits. CD105 is also known as endoglin, and is expressed by endothelial cells, activated monocytes and some leukaemia cells.
<b>Uniprot ID:</b>	<a href="#">P17813</a>
<b>NCBI:</b>	<a href="#">9606</a>
<b>Host / Isotype:</b>	Mouse / IgG1
<b>Clone:</b>	SN6
<b>Immunogen:</b>	Partially purified cell membrane antigens from fresh leukemia cells. Spleen cells from immunised BALB/c mice were fused with cells of the mouse P3/NS1/1-Ag4-1 myeloma cell line.
<b>Format:</b>	<b>State:</b> Liquid purified IgG fraction. <b>Purification:</b> Affinity Chromatography on Protein G <b>Buffer System:</b> PBS, pH7.4 containing 0.09% Sodium Azide as preservative.
<b>Applications:</b>	<b>Flow Cytometry:</b> Use 10 µl of 1/50 diluted CD105 antibody to label 10e6 cells in 100 µl. <b>Western Blot.</b> <b>Immunoprecipitation.</b> <b>Immunohistochemistry on Frozen Sections.</b> Other applications not tested. Optimal dilutions are dependent on conditions and should be determined by the user.
<b>Specificity:</b>	This antibody recognises the CD105 cell surface antigen. <b>Species:</b> Human. Other species not tested.
<b>Storage:</b>	Store the antibody undiluted at 2-8°C for one month or (in aliquots) at -20°C for longer. Avoid repeated freezing and thawing. Shelf life: one year from despatch.
<b>General References:</b>	1. Haruta, Y. and Seon, B.K. (1986) Distinct human leukemia-associated cell surface glycoprotein GP160 defined by monoclonal antibody SN6. Proc. Natl. Acad. Sci. USA 83: 7898-7902.

**For research and in vitro use only. Not for diagnostic or therapeutic work.**

Material Safety Datasheets are available at [www.acris-antibodies.com](http://www.acris-antibodies.com) or on request.

Antibody Hotline - Technical Questions - Antibody Location Service  
Free Call: 0800-2274746 (Germany only) - [www.acris-antibodies.com](http://www.acris-antibodies.com)

Pictures:



Staining of KG1 cells with Mouse Anti Human CD105 antibody (SM1177P).

**For research and in vitro use only. Not for diagnostic or therapeutic work.**

Material Safety Datasheets are available at [www.acris-antibodies.com](http://www.acris-antibodies.com) or on request.

Antibody Hotline - Technical Questions - Antibody Location Service  
Free Call: 0800-2274746 (Germany only) - [www.acris-antibodies.com](http://www.acris-antibodies.com)