

Monoclonal Antibody to CD105 / Endoglin - FITC

Alternate names:	END, ENG, HHT1, ORW, ORW1
Catalog No.:	SM1177F
Quantity:	0.1 mg
Concentration:	0.1 mg/ml
Background:	<p>CD105 or Endoglin is a Type I transmembrane protein, which is highly expressed on human vascular endothelial cells. It exists on an O- and N-glycosylated homodimer. Up regulation of endoglin expression has been demonstrated in tumor vasculature and proliferating cells, suggesting that it is a proliferation associated endothelial marker. CD105 binds to TGF beta 1 and 3 with high affinity but not to TGF beta 2.</p> <p>CD105 is a glycoprotein homodimer of 95 kD subunits.</p> <p>CD105 is expressed by endothelial cells, activated monocytes and some leukaemia cells.</p>
Uniprot ID:	P17813
NCBI:	9606
Host / Isotype:	Mouse / IgG1
Clone:	SN6
Immunogen:	<p>Partially purified cell membrane antigens from fresh leukaemia cells.</p> <p>Spleen cells from immunised BALB/c mice were fused with cells of the mouse P3/NS1/1-Ag4-1 myeloma cell line</p>
Format:	<p>State: Liquid purified IgG fraction.</p> <p>Purification: Affinity Chromatography on Protein G.</p> <p>Buffer System: PBS, pH 7.4 containing 0.09% Sodium Azide as a preservative and 1% BSA as a stabilizer.</p> <p>Label: FITC – Fluorescein Isothiocyanate Isomer 1</p>
Applications:	<p>Flow Cytometry: Use 10 µl of neat antibody to label 10e6 cells in 100 µl.</p> <p>Other applications not tested. Optimal dilutions are dependent on conditions and should be determined by the user.</p>
Specificity:	<p>SM1177F recognizes the CD105 cell surface antigen.</p> <p>Species: Human.</p> <p>Other species not tested.</p>
Storage:	<p>Store the antibody undiluted at 2-8°C for one month or (in aliquots) at -20°C for longer.</p> <p>This product is photosensitive and should be protected from light.</p> <p>Avoid repeated freezing and thawing.</p> <p>Shelf life: one year from despatch.</p>
General References:	1. Haruta, Y. and Seon, B.K. (1986) Distinct human leukemia-associated cell surface glycoprotein GP160 defined by monoclonal antibody SN6 P.N.A.S. USA 83: 7898-7902.

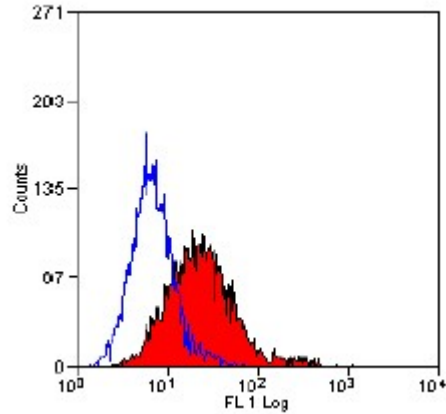
For research and in vitro use only. Not for diagnostic or therapeutic work.

Material Safety Datasheets are available at www.acris-antibodies.com or on request.

Antibody Hotline - Technical Questions - Antibody Location Service
Free Call: 0800-2274746 (Germany only) - www.acris-antibodies.com

2. Jin, H.J. et al. (2010) GD2 expression is closely associated with neuronal differentiation of human umbilical cord blood-derived mesenchymal stem cells. Cell Mol Life Sci. Feb 18. [Epub ahead of print]
3. Nagano, M. et al. (2007) Identification of functional endothelial progenitor cells suitable for the treatment of ischemic tissue using human umbilical cord blood. Blood. 110: 151-160.

Pictures:



Staining of KG1 cells with
mouse-anti-human CD105-FITC
antibody SM1177F

For research and in vitro use only. Not for diagnostic or therapeutic work.

Material Safety Datasheets are available at www.acris-antibodies.com or on request.

Antibody Hotline - Technical Questions - Antibody Location Service
Free Call: 0800-2274746 (Germany only) - www.acris-antibodies.com