

Monoclonal Antibody to CD62L / L-Selectin - FITC

Alternate names:	CD62 antigen-like family member L, LAM-1, LECAM1, LNHR, LYAM1, Leu-8, Leukocyte adhesion molecule 1, Leukocyte surface antigen Leu-8, Leukocyte-endothelial cell adhesion molecule 1, Lymph node homing receptor, SELL, TQ1, gp90-MEL
Catalog No.:	SM1149FT
Quantity:	25 µg
Concentration:	0.1 mg/ml
Background:	CD62L is a 74-95kDa member of the selectin family of adhesion receptors, which acts as a ligand for both CD62-P (P-selectin) and CD62E (E-selectin). Human CD62L is constitutively expressed on most leucocytes including monocytes, granulocytes, lymphocytes, NK cells, bone marrow myeloid progenitor cells and on a subset of thymocytes. CD62L plays an important role in leucocyte tethering and rolling on the endothelial cell surface and for the homing of naive lymphocytes to lymph nodes and Peyer's patches via HEV. Neutrophils require a constant supply of this molecule on the cell surface for migration into peripheral tissues and adhesion to activated endothelium at sites of inflammation, where CD62L is rapidly shed as soluble L-selectin, but surface expression still remains. The expression of CD62L is down regulated on lymphocytes and neutrophils by PMA stimulation.
Uniprot ID:	P14151
NCBI:	NP_000646.2
GeneID:	6402
Host / Isotype:	Mouse / IgG2b
Clone:	FMC46
Immunogen:	PHA stimulated lymphoblasts. Spleen cells from immunised BALB/c mice were fused with cells of the mouse NS1 myeloma cell line.
Format:	State: Liquid purified IgG fraction. Purification: Affinity Chromatography on Protein G. Buffer System: PBS, pH 7.4 containing 0.09% Sodium Azide as preservative and 1% BSA as stabilizer. Label: FITC – Fluorescein Isothiocyanate Isomer 1
Applications:	Flow Cytometry. Other applications not tested. Optimal dilutions are dependent on conditions and should be determined by the user.
Specificity:	This antibody recognizes CD62L, also known as L-selectin. Species: Human, Cynomolgus Monkey, Bovine and Rhesus Monkey. Other species not tested.

For research and in vitro use only. Not for diagnostic or therapeutic work.

Material Safety Datasheets are available at www.acris-antibodies.com or on request.

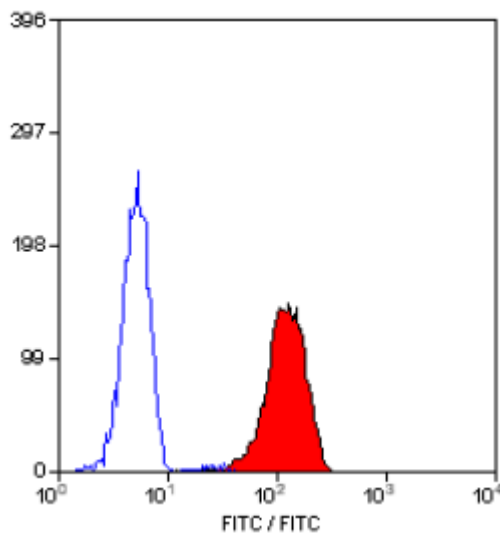
Antibody Hotline - Technical Questions - Antibody Location Service
Free Call: 0800-2274746 (Germany only) - www.acris-antibodies.com

Storage:

Store the antibody undiluted at 2-8°C for one month or (in aliquots) at -20°C for longer. This product is photosensitive and should be protected from light. Avoid repeated freezing and thawing. Shelf life: one year from despatch.

General References:

1. Pilarski, L. M. et al. (1991) FMC46, a cell protrusion-associated leucocyte adhesion molecule-1 epitope on human lymphocytes and thymocytes. *J. Immunol.* 147: 136-143.
2. Zola, H. et al. (1991) The expression of sub-population markers on B cells: A re-evaluation using high sensitivity fluorescence flow cytometry. *Dis. Markers* 9: 103-118.
3. Sopp, P. and Howard, C. C. (1997) Cross-reactivity of monoclonal antibodies to defined human leucocyte differentiation antigens with bovine cells. *Vet. Immunol. Immunopathol.* 56: 11-25.
4. Yoshino, N. et al. (2000) Upgrading of flow cytometric analysis for absolute counts, cytokines and other antigenic molecules of *Cynomolgus* monkeys (*Macaca fascicularis*) by using anti-human cross-reactive antibodies. *Exp. Anim.* 49: 97-110.

Pictures:

Staining of human peripheral blood granulocytes with Mouse Anti Human CD62L-FITC (SM1149F/FT).

For research and in vitro use only. Not for diagnostic or therapeutic work.

Material Safety Datasheets are available at www.acris-antibodies.com or on request.

Antibody Hotline - Technical Questions - Antibody Location Service
Free Call: 0800-2274746 (Germany only) - www.acris-antibodies.com