

Monoclonal Antibody to CD49f / ITGA6 - FITC

Alternate names:	CD49 antigen-like family member F, Integrin alpha-6, VLA-6, VLA6
Catalog No.:	SM1140F
Quantity:	0.1 mg
Concentration:	0.1 mg/ml
Background:	<p>Integrins are important extracellular matrix (ECM) receptor proteins located on cell surfaces. They are heterodimers composed of an alpha and a beta transmembrane glycoprotein subunit. Around twenty two different integrins (different alpha/ beta subunit combinations) are found in nature. Integrins are generally present in high concentrations at the cell surface, but, unlike most other cell surface receptors, they bind ligands with very low affinity. Due to their weak individual binding, integrins need to cluster and bind in groups in order to effectively bind the ECM. Integrins bind many different ligands including laminin. Each integrin is made up of a large N terminal extracellular domain that binds the ECM ligand and a small C terminal cytoplasmic domain that mediates interaction with the actin cytoskeleton and signaling function. Integrin alpha 6 complexes are receptors for laminins, which are components of basement membranes. Integrin alpha 6 complexes may play an important role in embryogenesis.</p>
Uniprot ID:	P23229
NCBI:	NP_000201.2
GeneID:	3655
Host / Isotype:	Mouse / IgG1
Clone:	450-30A
Immunogen:	alpha 6 beta 4 Integrin purified from A431 cells
Format:	<p>State: Liquid purified IgG fraction. Purification: Affinity chromatography on Protein G. Buffer System: PBS, pH 7.4 containing 0.09% Sodium Azide as preservative and 1% BSA as stabilizer. Label: FITC – Fluorescein Isothiocyanate Isomer 1</p>
Applications:	<p>Flow Cytometry: Use 10 µl of neat antibody to label 10e6 cells in 100 µl. Other applications not tested. Optimal dilutions are dependent on conditions and should be determined by the user.</p>
Specificity:	<p>This antibody recognises the human VLA-6 cell surface antigen, also known as the α6 Integrin and as CD49f. CD49f is expressed by platelets, weakly by monocytes and by a subset of lymphocytes. Species: Human. Other species not tested.</p>

For research and in vitro use only. Not for diagnostic or therapeutic work.

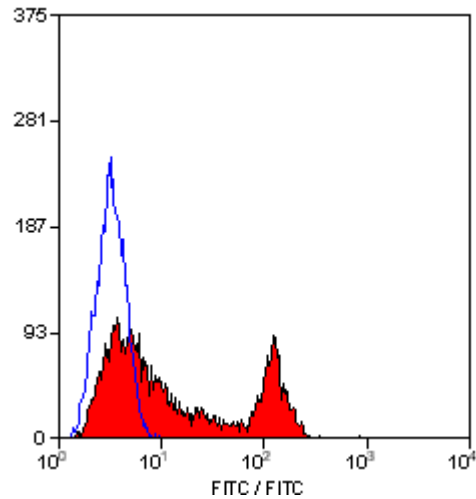
Material Safety Datasheets are available at www.acris-antibodies.com or on request.

Antibody Hotline - Technical Questions - Antibody Location Service
Free Call: 0800-2274746 (Germany only) - www.acris-antibodies.com

Storage: Store the antibody undiluted at 2-8°C for one month or (in aliquots) at -20°C for longer. This product is photosensitive and should be protected from light. Avoid repeated freezing and thawing. Shelf life: one year from despatch.

General References: 1. Kennel, S.J. et al. (1990). Second generation antibodies to the human integrin $\alpha 6\beta 4$. Hybridoma 9: 243-255.

Pictures:



Staining of human peripheral blood lymphocytes with Mouse Anti Human CD49f (SM1140F/FT).

For research and in vitro use only. Not for diagnostic or therapeutic work.

Material Safety Datasheets are available at www.acris-antibodies.com or on request.

Antibody Hotline - Technical Questions - Antibody Location Service
Free Call: 0800-2274746 (Germany only) - www.acris-antibodies.com