

Monoclonal Antibody to CD49b / ITGA2 - FITC

Alternate names:	CD49 antigen-like family member B, Collagen Receptor, GPIa, ITGA-2, Integrin alpha-2, Platelet membrane glycoprotein Ia, VLA-2 alpha, VLA2
Catalog No.:	SM1125FT
Quantity:	25 µg
Concentration:	0.1 mg/ml
Background:	CD49b is a 160kD glycoprotein that non-covalently associates with the 130kD integrin beta 1 subunit (CD29) to form the VLA-2 complex. CD49b is expressed by platelets, long term cultivated T cells, endothelial cells, monocytes and most adherent cell lines.
Uniprot ID:	P17301
NCBI:	NP_002194.2
GeneID:	3673
Host / Isotype:	Mouse / IgG1
Clone:	AK7
Immunogen:	Spleen cells from immunised mice were fused with cells of the mouse NS1 myeloma cell line.
Format:	State: Liquid purified IgG fraction. Purification: Affinity Chromatography on Protein G. Buffer System: PBS, pH 7.4 containing 0.09% Sodium Azide as preservative and 1% BSA as stabilizer. Label: FITC – Fluorescein Isothiocyanate Isomer 1
Applications:	Flow Cytometry: Use 10 µl of Neat-1/5 diluted antibody to label 10e6 cells or 100 µl whole blood. Other applications not tested. Optimal dilutions are dependent on conditions and should be determined by the user.
Specificity:	This antibody recognizes the Integrin alpha 2 subunit (CD49b/ITGA2). Species: Human, Cynomolgus monkey, Baboon and Rhesus Monkey. Other species not tested.
Storage:	Store the antibody undiluted at 2-8°C for one month or (in aliquots) at -20°C for longer. This product is photosensitive and should be protected from light. Avoid repeated freezing and thawing. Shelf life: one year from despatch.
General References:	1. Favaloro, E.J. et al. (1990) Co-expression of haemopoietic antigens on vascular endothelial cells: a detailed phenotypic analysis. <i>Brit. J. Haematol.</i> 74: 385-394. 2. Mazurov, A.V. et al. (1991) A monoclonal antibody, VM64, reacts with a 130 kDa glycoprotein common to platelets and endothelial cells: heterogeneity in antibody binding

For research and in vitro use only. Not for diagnostic or therapeutic work.

Material Safety Datasheets are available at www.acris-antibodies.com or on request.

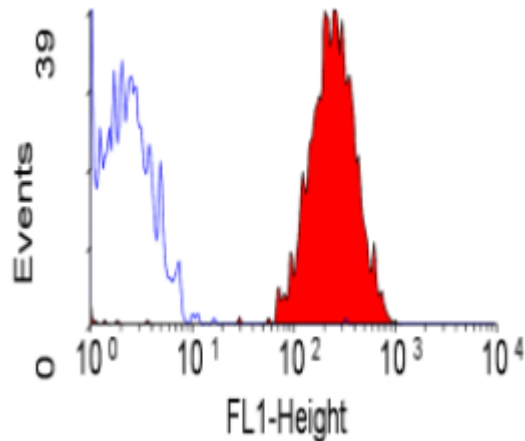
Antibody Hotline - Technical Questions - Antibody Location Service
Free Call: 0800-2274746 (Germany only) - www.acris-antibodies.com

to human aortic endothelial cells. *Thromb. Haemost.* 66: 494-499.

3. Yoshino, N. et al. (2000) Upgrading of flow cytometric analysis for absolute counts, cytokines and other antigenic molecules of Cynomolgus monkeys (*Macaca fascicularis*) by using anti-human cross-reactive antibodies. *Exp. Anim.* 49 (2): 97-110

4. Cialet, M. et al. (2002) VLA-2 (alpha2beta1) integrin promotes rotavirus entry into cells but is not necessary for rotavirus attachment. *J. Virol.* 76 (3): 1109 - 1123

Pictures:



Staining of human peripheral blood platelets with Mouse Anti Human CD49b-FITC (SM1125F/FT).

For research and in vitro use only. Not for diagnostic or therapeutic work.

Material Safety Datasheets are available at www.acris-antibodies.com or on request.

Antibody Hotline - Technical Questions - Antibody Location Service
Free Call: 0800-2274746 (Germany only) - www.acris-antibodies.com