

## Monoclonal Antibody to CD48 - PE

<b>Alternate names:</b>	B-lymphocyte activation marker BLAST-1, BCM1, BCM1 surface antigen, BLAST1, Leukocyte antigen MEM-102, MEM-102, TCT.1
<b>Catalog No.:</b>	SM1121RT
<b>Quantity:</b>	25 Tests
<b>Background:</b>	CD48 is a glycosyl phosphatidyl inositol (GPI) anchored cell surface protein also known as Blast1, HuLy m3, BCM1 (in mouse), and OX45 (in rat). CD48 is strongly expressed on lymphocytes and monocytes and weakly on granulocytes but is absent on platelets, fibroblasts, epithelium and endothelium. CD48 is one of the markers for detecting the defects of GPI anchoring structure on patients with paroxysmal nocturnal hemoglobinuria (PNH) and serves as a low affinity ligand for CD2. The CD48 antigen is closely related to the activation antigen, Blast 1.
<b>Uniprot ID:</b>	<a href="#">P09326</a>
<b>NCBI:</b>	<a href="#">NP_001769.2</a>
<b>GeneID:</b>	<a href="#">962</a>
<b>Host / Isotype:</b>	Mouse / IgG1
<b>Clone:</b>	MEM-102
<b>Format:</b>	<b>State:</b> Lyophilized purified IgG fraction <b>Purification:</b> Affinity Chromatography on Protein A <b>Buffer System:</b> PBS, pH 7.4 <b>Preservatives:</b> 0.09% Sodium Azide <b>Stabilizers:</b> 1% BSA <b>Label:</b> PE – R. Phycoerythrin (RPE) <b>Reconstitution:</b> Restore with distilled water.
<b>Applications:</b>	<b>Flow Cytometry:</b> Use 10 µl of neat antibody to label 10 <sup>6</sup> cells in 100 µl. Other applications not tested. Optimal dilutions are dependent on conditions and should be determined by the user.
<b>Specificity:</b>	This antibody binds to the 45kD leucocyte surface glycoprotein specific for the CD48 antigen which is closely related to the activation antigen, Blast-1. It is useful in the detection of CD48 positive cells and may be used in studies to differentiate haemopoietic tumours, sarcomas and melanomas. <b>Species:</b> Human and Rhesus Monkey. Other species not tested.
<b>Storage:</b>	Prior to and following reconstitution store the antibody undiluted at 2-8°C. <b>DO NOT FREEZE!</b> This product is photosensitive and should be protected from light. Shelf life: one year from despatch.

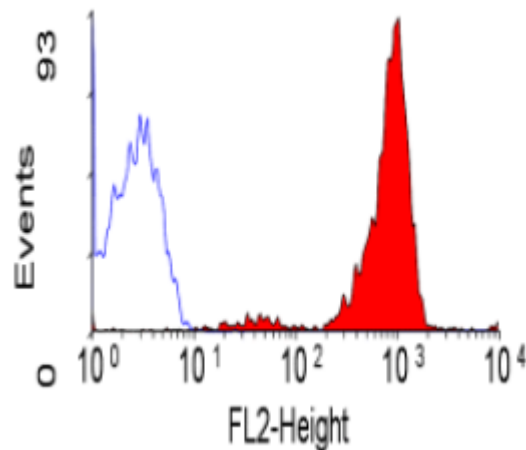
**For research and in vitro use only. Not for diagnostic or therapeutic work.**

Material Safety Datasheets are available at [www.acris-antibodies.com](http://www.acris-antibodies.com) or on request.

Antibody Hotline - Technical Questions - Antibody Location Service  
Free Call: 0800-2274746 (Germany only) - [www.acris-antibodies.com](http://www.acris-antibodies.com)

- General References:**
1. Korinek, V. et al. (1991) The human leucocyte antigen CD48 (MEM-102) is closely related to the activation marker Blast-1. *Immunogenetics*. 33: 108-112.
  2. Horejsi, V. et al. (1988) Monoclonal antibodies against human leucocyte antigens. II. Antibodies against CD45 (T200), CD3 (T3), CD43, CD10 (CALLA), transferrin receptor (T9), a novel broadly expressed 18kDa antigen (MEM43) and a novel antigen of restricted expression (MEM74). *Fol. Biol. (Praha)*. 34: 2334.
  3. Cinek, T. and Horejsi, V. (1992) The nature of large noncovalent complexes containing glycosylphosphatidylinositol-anchored membrane glycoproteins and protein tyrosine kinases. *J. Immunol.* 149: 2262-2270.
  4. Staffler, G. et al. (2003) Selective inhibition of T cell activation via CD147 through novel modulation of lipid rafts. *J. Immunol.* 171: 17071714.

**Pictures:**



SM1121R/RT staining of human peripheral blood lymphocytes.

**For research and in vitro use only. Not for diagnostic or therapeutic work.**

Material Safety Datasheets are available at [www.acris-antibodies.com](http://www.acris-antibodies.com) or on request.

Antibody Hotline - Technical Questions - Antibody Location Service  
Free Call: 0800-2274746 (Germany only) - [www.acris-antibodies.com](http://www.acris-antibodies.com)