

Monoclonal Antibody to CD38 - PE

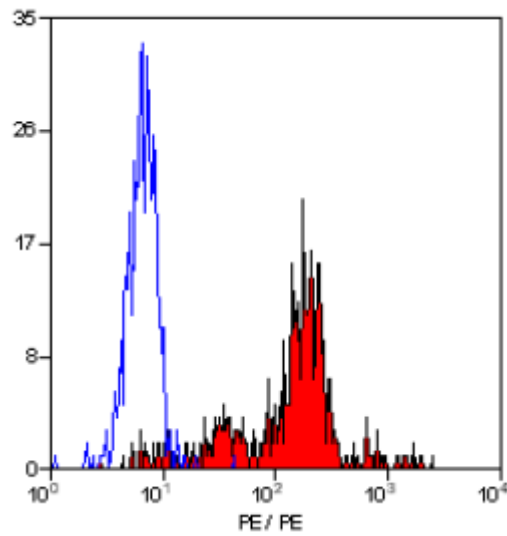
Alternate names:	ADP-ribosyl cyclase 1, Cyclic ADP-ribose hydrolase 1, T10, cADPr hydrolase 1
Catalog No.:	SM1106RT
Quantity:	25 Tests
Background:	CD38 is expressed by plasma cells, monocytes, early lymphoid cells and activated T cells. CD38 is widely used to study the process of T and B cell differentiation and activation. Recently CD38 has been shown to possess ADP-ribosyl cyclase activity.
Uniprot ID:	P28907
NCBI:	NP_001766.2
GeneID:	952
Host / Isotype:	Mouse / IgG1
Clone:	AT13/5
Immunogen:	Namalwa cell line. Spleen cells from immunised BALB/c mice were fused with cells of the mouse NS1 myeloma cell line.
Format:	State: Lyophilized purified IgG fraction. Purification: Affinity chromatography on Protein A Buffer System: PBS containing 0.09% Sodium Azide as preservative and 1% BSA as stabilizer. Label: PE – R. Phycoerythrin (RPE) Reconstitution: Restore with distilled water.
Applications:	Flow Cytometry: Use 10 µl of Neat-1/5 diluted antibody to label 10e6 cells in 100 µl. Other applications not tested. Optimal dilutions are dependent on conditions and should be determined by the user.
Specificity:	This antibody recognises the CD38 cell surface antigen, a 45kD glycoprotein. Species: Human. Other species not tested.
Storage:	Prior to and following reconstitution store the antibody undiluted at 2-8°C. DO NOT FREEZE! This product is photosensitive and should be protected from light. Shelf life: one year from despatch.
General References:	1. Malavasi, F. et al. (1994) Human CD38: a glycoprotein in search of a function. Immunol. Today. 15: 95-97. 2. Ellis, J.H. et al. (1995) , Engineered anti-CD38 monoclonal antibodies for immunotherapy of multiple myeloma. J. Immunol. 155: 925-437.

For research and in vitro use only. Not for diagnostic or therapeutic work.

Material Safety Datasheets are available at www.acris-antibodies.com or on request.

Antibody Hotline - Technical Questions - Antibody Location Service
Free Call: 0800-2274746 (Germany only) - www.acris-antibodies.com

Pictures:



Staining of human peripheral blood monocytes with Mouse Anti Human CD38-RPE.

For research and in vitro use only. Not for diagnostic or therapeutic work.

Material Safety Datasheets are available at www.acris-antibodies.com or on request.

Antibody Hotline - Technical Questions - Antibody Location Service
Free Call: 0800-2274746 (Germany only) - www.acris-antibodies.com