

## Monoclonal Antibody to CD33 / SIGLEC3 - PE

<b>Alternate names:</b>	Myeloid cell surface antigen CD33, Sialic acid-binding Ig-like lectin 3, Siglec-3, gp67
<b>Catalog No.:</b>	SM1103RT
<b>Quantity:</b>	25 Tests
<b>Background:</b>	<p>CD33 is found on granulocyte and macrophage precursors in the bone marrow, but is not on pluripotent stem cells. The protein is also expressed on, and is a useful marker for, peripheral monocytes. It is also useful for distinguishing myelogenous leukaemia cells from lymphoid or erythroid leukaemias.</p> <p>Identification of human Monocytes (bright) and Granulocytes (dim) expressing the 67kDa M.W. surface antigen.</p> <p>CD33 is a 67kD molecule expressed by monocytes, granulocyte precursors, myeloid progenitor cells and myeloid leukaemias.</p>
<b>Uniprot ID:</b>	<a href="#">P20138</a>
<b>NCBI:</b>	<a href="#">NP_001763.3</a>
<b>GeneID:</b>	<a href="#">945</a>
<b>Host / Isotype:</b>	Mouse / IgG1
<b>Clone:</b>	WM53
<b>Immunogen:</b>	Human AML cells. Spleen cells from immunised BALB/c mice were fused with cells of the mouse NS1 myeloma cell line.
<b>Format:</b>	<p><b>State:</b> Lyophilized purified IgG fraction.</p> <p><b>Purification:</b> Affinity chromatography on Protein G.</p> <p><b>Buffer System:</b> PBS, pH 7.4 containing 0.09% Sodium Azide as preservative and 1% BSA as stabilizer.</p> <p><b>Label:</b> PE – R. Phycoerythrin (RPE)</p> <p><b>Reconstitution:</b> Restore with distilled water.</p>
<b>Applications:</b>	<p>Flow Cytometry: Neat-1/5; Use 10µl of the suggested working dilution to label 10e6 cells in 100µl.</p> <p>Other applications not tested. Optimal dilutions are dependent on conditions and should be determined by the user.</p>
<b>Specificity:</b>	This antibody recognises the CD33 cell surface glycoprotein.
<b>Species Reactivity:</b>	<b>Tested:</b> Human.
<b>Storage:</b>	<p>Prior to and following reconstitution store the antibody undiluted at 2-8°C.</p> <p><b>DO NOT FREEZE!</b></p> <p>This product is photosensitive and should be protected from light.</p> <p>Shelf life: one year from despatch.</p>

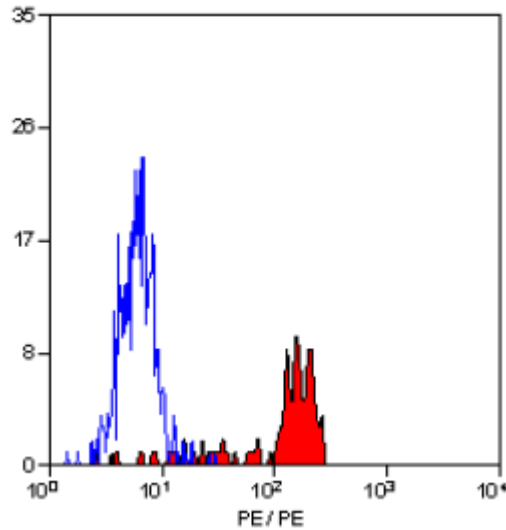
**For research and in vitro use only. Not for diagnostic or therapeutic work.**

Material Safety Datasheets are available at [www.acris-antibodies.com](http://www.acris-antibodies.com) or on request.

Antibody Hotline - Technical Questions - Antibody Location Service  
Free Call: 0800-2274746 (Germany only) - [www.acris-antibodies.com](http://www.acris-antibodies.com)

- General References:**
1. Favaloro, E.J. et al. (1987) Characterisation of monoclonal antibodies to the human myeloid-specific antigen gp67 (CD-33). *Dis. Markers* 5: 215-225.
  2. Favaloro, E.J. et al. (1988) Further characterisation of myeloid antigens (gp160,95, gp150 and gp67): Investigation of epitopic heterogeneity and non-haemopoietic distribution using panels of monoclonal antibodies belonging to CD-11b, CD-13 and CD33. *Br. J. Haematol.* 69: 163-171.

**Pictures:**



Staining of human peripheral blood monocytes with Mouse Anti Human CD33 antibody -RPE

**For research and in vitro use only. Not for diagnostic or therapeutic work.**

Material Safety Datasheets are available at [www.acris-antibodies.com](http://www.acris-antibodies.com) or on request.

Antibody Hotline - Technical Questions - Antibody Location Service  
Free Call: 0800-2274746 (Germany only) - [www.acris-antibodies.com](http://www.acris-antibodies.com)