

## Monoclonal Antibody to CD35 / C3BR - PE

<b>Alternate names:</b>	C3b/C4b receptor, CR1, Complement receptor type 1
<b>Catalog No.:</b>	SM1097RT
<b>Quantity:</b>	25 Tests
<b>Background:</b>	CD35 is a single chain cell surface glycoprotein which exists in four allotypic forms (A,B,C,D) of 190kD, 220kD, 160kD and 250kD respectively. The molecule is expressed by granulocytes, monocytes, B cells and some T cells. Functionally CD35 acts as a receptor for the C3b component of complement.
<b>Uniprot ID:</b>	<a href="#">P17927</a>
<b>NCBI:</b>	<a href="#">9606</a>
<b>Host / Isotype:</b>	Mouse / IgG1
<b>Clone:</b>	E11
<b>Immunogen:</b>	Human acute monocytic leukaemia cells. Spleen cells from immunised BALB/c mice were fused with cells of the mouse NS1 myeloma cell line.
<b>Format:</b>	<b>State:</b> Lyophilized purified IgG fraction. <b>Purification:</b> Affinity chromatography on Protein A. <b>Buffer System:</b> PBS, pH 7.2 containing 0.09% Sodium Azide as preservative, 1% BSA as stabilizer and Inert Bulking Reagent. <b>Label:</b> PE – R. Phycoerythrin (RPE) <b>Reconstitution:</b> Restore with distilled water. Care should be taken during reconstitution as the protein may appear as a film at the bottom of the vial. We recommend that the vial is gently mixed after reconstitution.
<b>Applications:</b>	Flow Cytometry. Other applications not tested. Optimal dilutions are dependent on conditions and should be determined by the user.
<b>Specificity:</b>	This antibody is specific for CD35. <b>Species:</b> Human, Cynomolgus Monkey, Baboon and Rhesus Monkey. Other species not tested.
<b>Storage:</b>	Store the antibody undiluted at 2-8°C. <b>DO NOT FREEZE!</b> This product is photosensitive and should be protected from light. Shelf life: one year from despatch.
<b>General References:</b>	1. Hogg, N. et al. (1984) Identification of an anti-monocyte monoclonal antibody that is specific for membrane complement receptor type one (CR1). <i>Eur J Immunol.</i> 14 (3): 236-43 2. Yoshino, N. et al. (2000) Upgrading of flow cytometric analysis for absolute counts, cytokines and other antigenic molecules of Cynomolgus monkeys ( <i>Macaca fascicularis</i> ) by

**For research and in vitro use only. Not for diagnostic or therapeutic work.**

Material Safety Datasheets are available at [www.acris-antibodies.com](http://www.acris-antibodies.com) or on request.

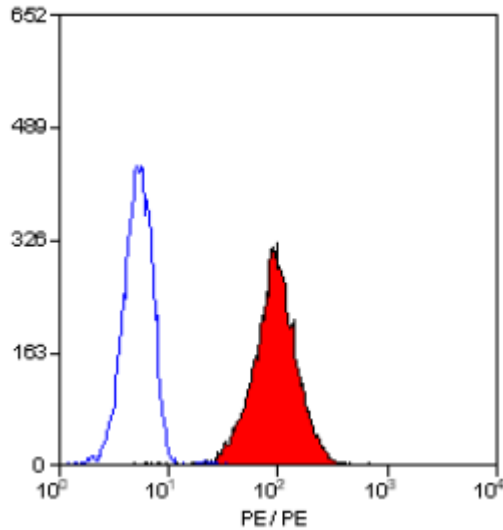
Antibody Hotline - Technical Questions - Antibody Location Service  
Free Call: 0800-2274746 (Germany only) - [www.acris-antibodies.com](http://www.acris-antibodies.com)

using anti-human cross-reactive antibodies. *Exp. Anim.* 49 (2): 97-110

3. Birmingham, D.J. et al. (1996) The baboon erythrocyte complement receptor is glycoposphatidyl/insitolinked protein encoded by homologue of the human CR1 - like genetic element. *J. Immunol.* 157: 2586 - 2592.

4. Sopper, S. et al. (1997) Lymphocyte subsets and expression of differentiation markers in blood and lymphoid organs of Rhesus monkeys. *Cytometry* 29: 351-362.

**Pictures:**



Staining of human peripheral blood granulocytes with Mouse Anti Human CD35-RPE.

**For research and in vitro use only. Not for diagnostic or therapeutic work.**

Material Safety Datasheets are available at [www.acris-antibodies.com](http://www.acris-antibodies.com) or on request.

Antibody Hotline - Technical Questions - Antibody Location Service  
Free Call: 0800-2274746 (Germany only) - [www.acris-antibodies.com](http://www.acris-antibodies.com)