

## Monoclonal Antibody to CD32 / FcRII-a - PE

<b>Alternate names:</b>	CDw32, FCG2, FCGR2A, FCGR2A1, Fc-gamma RII-a, Fc-gamma-RIIa, IGFR2, IgG Fc receptor II, Low affinity immunoglobulin gamma Fc region receptor II
<b>Catalog No.:</b>	SM1092RT
<b>Quantity:</b>	25 Tests
<b>Background:</b>	CD32 is a 40kD glycoprotein that acts as a low affinity receptor for IgG (also known as Fc gamma RII). The antigen mediates several functions including endocytosis, activation of secretion, cytotoxicity and immunomodulation. CD32 is expressed by B cells, monocytes, granulocytes and platelets.
<b>Uniprot ID:</b>	<a href="#">P12318</a>
<b>NCBI:</b>	<a href="#">NP_001129691.1</a>
<b>GeneID:</b>	<a href="#">2212</a>
<b>Host / Isotype:</b>	Mouse / IgG1
<b>Clone:</b>	AT10
<b>Immunogen:</b>	K562 cell line. Spleen cells from immunised BALB/c mice were fused with cells of the mouse NS1 myeloma cell line.
<b>Format:</b>	<b>State:</b> Lyophilized purified IgG fraction. <b>Purification:</b> Affinity chromatography on Protein A <b>Buffer System:</b> PBS, pH 7.4 containing 0.09% Sodium Azide as preservative and 1% BSA as stabilizer. <b>Label:</b> PE – R. Phycoerythrin (RPE) <b>Reconstitution:</b> Restore with distilled water.
<b>Applications:</b>	Flow cytometry. Other applications not tested. Optimal dilutions are dependent on conditions and should be determined by the user.
<b>Specificity:</b>	This antibody recognises the CD32 antigen. Clone AT10 blocks the binding of IgG to Fc gamma R11. SM1092LE is recommended for this purpose. <b>Species:</b> Human, Rhesus Monkey and Dog. Other species not tested.
<b>Storage:</b>	Store the antibody undiluted at 2-8°C. <b>DO NOT FREEZE!</b> This product is photosensitive and should be protected from light. Shelf life: one year from despatch.

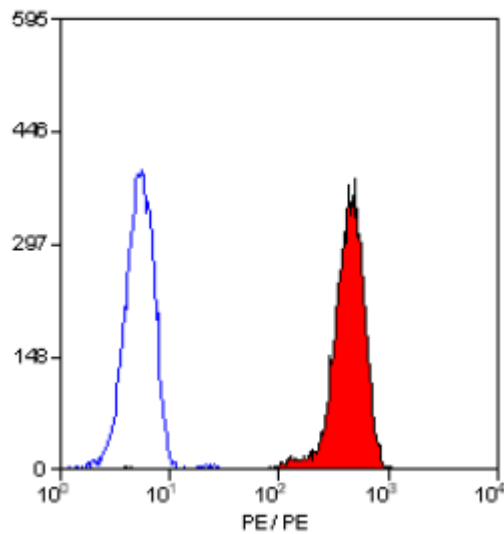
**For research and in vitro use only. Not for diagnostic or therapeutic work.**

Material Safety Datasheets are available at [www.acris-antibodies.com](http://www.acris-antibodies.com) or on request.

Antibody Hotline - Technical Questions - Antibody Location Service  
Free Call: 0800-2274746 (Germany only) - [www.acris-antibodies.com](http://www.acris-antibodies.com)

- General References:**
1. Greenman, J. et al. (1991) Characterisation of a new monoclonal anti-Fc gamma RII antibody, AT10, and its incorporation into a bispecific F(ab')<sub>2</sub> derivative for recruitment of cytotoxic effectors. *Mol. Immunol.* 28: 1243-1254.
  2. van den Herik-Oudijk, I. E. et al. (1994) Functional analysis of human Fc gamma RII (CD32) isoforms expressed in B lymphocytes. *J. Immunol.* 152: 574-585.
  3. Lilliehook, I. et al. (1998) Expression of adhesion and Fc gamma - receptors on canine blood eosinophils and neutrophils studied by anti-human monoclonal antibodies. *Vet. Immunol. Immunopathol.* 61: 181 - 193.
  4. Larsson, M. et al. (1997) Human dendritic cells handling of binding, uptake and degradation of free and IgG - immune complexed dinitrophenylated human serum albumin *in vitro*. *Immunology.* 90: 138-146.

**Pictures:**



Staining of human peripheral blood granulocytes with MOUSE ANTI HUMAN CD32:RPE (SM1092R).

**For research and in vitro use only. Not for diagnostic or therapeutic work.**

Material Safety Datasheets are available at [www.acris-antibodies.com](http://www.acris-antibodies.com) or on request.

Antibody Hotline - Technical Questions - Antibody Location Service  
Free Call: 0800-2274746 (Germany only) - [www.acris-antibodies.com](http://www.acris-antibodies.com)