

## Monoclonal Antibody to CD18 / ITGB2 - PE

<b>Alternate names:</b>	95 subunit beta, Cell surface adhesion glycoproteins LFA-1/CR3/p150, Complement receptor C3 subunit beta, Integrin beta-2, MFI7
<b>Catalog No.:</b>	SM1076RT
<b>Quantity:</b>	25 Tests
<b>Background:</b>	The CD18 antigen is an integral membrane glycoprotein of 95kD molecular weight - known as the b chain, of the LFA-1 complex. The CD18 antigen is non-covalently linked to CD11a, b, c molecules. The CD18 molecule is the receptor for ICAM-1 and is thus important for cell adhesion.
<b>Uniprot ID:</b>	<a href="#">P05107</a>
<b>NCBI:</b>	<a href="#">NP_000202.2</a>
<b>GeneID:</b>	<a href="#">3689</a>
<b>Host / Isotype:</b>	Rat / IgG2b
<b>Clone:</b>	YFC118.3
<b>Immunogen:</b>	Human neutrophils. Spleen cells from immunised LOU rats were fused with cells of the Y3/Ag.1.2.3 rat myeloma cell line.
<b>Format:</b>	<b>State:</b> Lyophilized purified IgG <b>Purification:</b> Affinity chromatography on Protein G <b>Buffer System:</b> PBS, pH7.2 containing 0.09% Sodium Azide and 1% Bovine Serum Albumin <b>Label:</b> PE – R. Phycoerythrin (RPE) <b>Reconstitution:</b> SM1076R: Restore with 1 ml distilled water. SM1076RT: Restore with 25 µl distilled water.
<b>Applications:</b>	Flow cytometry: Use 10 µl of neat antibody to label 100 µl whole blood or 10e6 cells in 100 µl. Other applications not tested. Optimal dilutions are dependent on conditions and should be determined by the user.
<b>Specificity:</b>	YFC118.3 was clustered at the Fourth International Workshop on Leucocyte Differentiation Antigen as recognising the CD18 antigen. The main cellular reactivity of antibody YFC 118.3 is a strong reactivity with Leucocytes (platelets negative). YFC118.3 blocks homotypic adhesion and other lymphocyte functions which involve the LFA-1 antigen. <b>Species:</b> Human, Dog. Other species not tested.
<b>Storage:</b>	Prior to and following reconstitution store the antibody at 2-8°C. DO NOT FREEZE! This product is photosensitive and should be protected from light. Shelf life: one year from despatch.

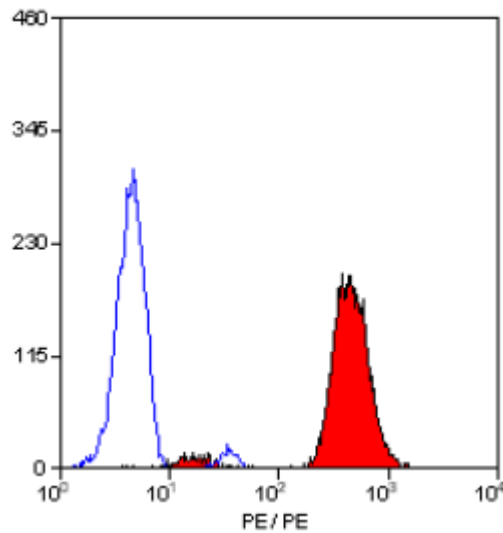
**For research and in vitro use only. Not for diagnostic or therapeutic work.**

Material Safety Datasheets are available at [www.acris-antibodies.com](http://www.acris-antibodies.com) or on request.

Antibody Hotline - Technical Questions - Antibody Location Service  
Free Call: 0800-2274746 (Germany only) - [www.acris-antibodies.com](http://www.acris-antibodies.com)

- General References:**
1. Galfe et al. (1979) Nature 277: 131-133.
  2. Bindon C.I. et al (1988) Importance of antigen specificity for complement-mediated lysis by monoclonal antibodies. Eur. J. Immunol. 18: 1507-1514.
  3. Chabanne, L. et al. (1994) Screening of 78 monoclonal antibodies directed against human leukocyte antigens for cross-reactivity with surface markers on canine lymphocytes. Tissue antigens 43:202-205.
  4. The isolation and characterisation of this cell line was carried out with help of funds supplied by the Medical Research Council, UK.

**Pictures:**



Staining of human peripheral blood granulocytes with RAT ANTI HUMAN CD18:RPE

**For research and in vitro use only. Not for diagnostic or therapeutic work.**

Material Safety Datasheets are available at [www.acris-antibodies.com](http://www.acris-antibodies.com) or on request.

Antibody Hotline - Technical Questions - Antibody Location Service  
Free Call: 0800-2274746 (Germany only) - [www.acris-antibodies.com](http://www.acris-antibodies.com)