

Monoclonal Antibody to CD18 / ITGB2 - FITC

Alternate names:	95 subunit beta, Cell surface adhesion glycoproteins LFA-1/CR3/p150, Complement receptor C3 subunit beta, Integrin beta-2, MFI7
Catalog No.:	SM1076F
Quantity:	100 Tests
Background:	The CD18 antigen is an integral membrane glycoprotein of 95kD molecular weight - known as the beta chain, of the LFA-1 complex. The CD18 antigen is non-covalently linked to CD11a, b, c molecules. The CD18 molecule is the receptor for ICAM-1 and is thus important for cell adhesion.
Uniprot ID:	P05107
NCBI:	NP_000202.2
GeneID:	3689
Host / Isotype:	Rat / IgG2b
Clone:	YFC118.3
Immunogen:	Human neutrophils. Spleen cells from immunised LOU rats were fused with cells of the Y3/Ag.1.2.3 myeloma cell line.
Format:	State: Liquid purified IgG Purification: Affinity chromatography on Protein G Buffer System: PBS, pH7.2 containing 0.09% Sodium Azide and 1% Bovine Serum Albumin Label: FITC – Fluorescein Isothiocyanate Isomer 1
Applications:	Flow Cytometry. Other applications not tested. Optimal dilutions are dependent on conditions and should be determined by the user.
Specificity:	This antibody was clustered at the Fourth International Workshop on Leucocyte Differentiation Antigen as recognising the CD18 antigen. The main cellular reactivity of antibody YFC 118.3 is a strong reactivity with Leucocytes (platelets negative). Species: Human, Dog. Other species not tested.
Storage:	Store the antibody undiluted at 2-8°C for one month or (in aliquots) at -20°C for longer. Avoid repeated freezing and thawing. This product is photosensitive and should be protected from light. Shelf life: one year from despatch.
General References:	1. Galfre et al. (1979) Rat X rat hybrid myelomas and a monoclonal anti-Fd portion of mouse IgG. Nature. 277 (5692): 131-133. 2. Bindon C.I. et al (1988) Importance of antigen specificity for complement-mediated lysis by monoclonal antibodies. Eur. J. Immunol. 18: 1507-1514.

For research and in vitro use only. Not for diagnostic or therapeutic work.

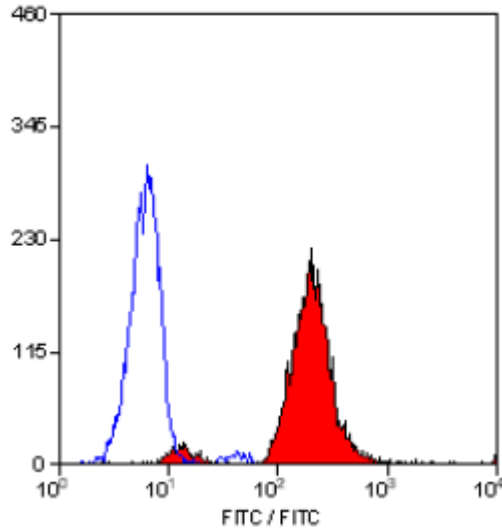
Material Safety Datasheets are available at www.acris-antibodies.com or on request.

Antibody Hotline - Technical Questions - Antibody Location Service
Free Call: 0800-2274746 (Germany only) - www.acris-antibodies.com

3. Chabanne, L. et al. (1994) Screening of 78 monoclonal antibodies directed against human leukocyte antigens for cross-reactivity with surface markers on canine lymphocytes. Tissue antigens 43:202-205.

4. The isolation and characterisation of this cell line was carried out with help of funds supplied by the Medical Research Council, UK.

Pictures:



Staining of human peripheral blood granulocytes with RAT ANTI HUMAN CD18:FITC

For research and in vitro use only. Not for diagnostic or therapeutic work.

Material Safety Datasheets are available at www.acris-antibodies.com or on request.

Antibody Hotline - Technical Questions - Antibody Location Service
Free Call: 0800-2274746 (Germany only) - www.acris-antibodies.com