

## Monoclonal Antibody to CD14 - PE

<b>Alternate names:</b>	Monocyte differentiation antigen CD14, Myeloid cell-specific leucine-rich glycoprotein
<b>Catalog No.:</b>	SM1071RT
<b>Quantity:</b>	25 Tests
<b>Concentration:</b>	0.1 mg/ml
<b>Background:</b>	CD14 is a single copy gene encoding 2 protein forms: a 50 to 55 kDa glycosylphosphatidylinositol anchored membrane protein (mCD14) and a monocyte or liver derived soluble serum protein (sCD14) that lacks the anchor. Both molecules are critical for lipopolysaccharide (LPS) dependent signal transduction, and sCD14 confers LPS sensitivity to cells lacking mCD14. Increased sCD14 levels are associated with inflammatory infectious diseases and high mortality in gram negative shock. CD14 also appears to be involved in clearance of gram-negative bacteria via its high affinity binding to LPS-LPB complexes.
<b>Uniprot ID:</b>	<a href="#">P08571</a>
<b>NCBI:</b>	<a href="#">9606</a>
<b>Host / Isotype:</b>	Mouse / IgG2a
<b>Clone:</b>	UCHM1
<b>Immunogen:</b>	Human Thymocytes followed by peripheral blood mononuclear cells. Spleen cells from an immunised mouse were fused with cells of a mouse myeloma line.
<b>Format:</b>	<b>State:</b> Lyophilized purified IgG fraction. <b>Purification:</b> Affinity chromatography on Protein G <b>Buffer System:</b> PBS, pH7.4 containing 0.09% Sodium Azide as preservative and 1% Bovine Serum Albumin as stabilizer. <b>Label:</b> PE – R. Phycoerythrin (RPE) <b>Reconstitution:</b> Restore with distilled water
<b>Applications:</b>	Flow cytometry. Other applications not tested. Optimal dilutions are dependent on conditions and should be determined by the user.
<b>Specificity:</b>	This antibody recognises the CD14 cell surface antigen, a 55kD glycoprotein expressed by monocytes and macrophages. <b>Species:</b> Human. Other species not tested.
<b>Storage:</b>	Prior to and following reconstitution store the antibody undiluted at 2-8°C. <b>DO NOT FREEZE!</b> This product is photosensitive and should be protected from light. Shelf life: one year from despatch.

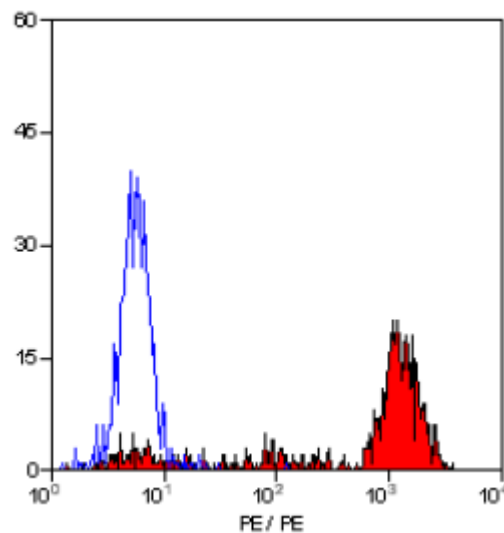
**For research and in vitro use only. Not for diagnostic or therapeutic work.**

Material Safety Datasheets are available at [www.acris-antibodies.com](http://www.acris-antibodies.com) or on request.

Antibody Hotline - Technical Questions - Antibody Location Service  
Free Call: 0800-2274746 (Germany only) - [www.acris-antibodies.com](http://www.acris-antibodies.com)

- General References:**
1. Hogg, N. et al. (1984) Monoclonal antibodies specific for human monocytes, granulocytes and endothelium. *Immunol.* 53: 753-768.
  2. Linch, D.C. et al. (1984) Monoclonal antibodies differentiation between monocytic and non-monocytic variants of AML. *Blood.* 63: 566-573.
  3. Jonker, M. et al. (1989) Reactivity of mAb specific for human CD markers with Rhesus monkey leucocytes. *Leucocyte Typing IV.* Oxford University Press. p 1058 - 1063.
  4. Yoshino, N. et al. (2000) Upgrading of flow cytometric analysis for absolute counts, cytokines and other antigenic molecules of Cynomolgus monkeys (*Macaca fascicularis*) by using anti-human cross reactive antibodies. *Exp. Anim.* 49 (2): 97 - 110.

**Pictures:**



Staining of human peripheral blood monocytes with Mouse Anti Human CD14-RPE

**For research and in vitro use only. Not for diagnostic or therapeutic work.**

Material Safety Datasheets are available at [www.acris-antibodies.com](http://www.acris-antibodies.com) or on request.

Antibody Hotline - Technical Questions - Antibody Location Service  
Free Call: 0800-2274746 (Germany only) - [www.acris-antibodies.com](http://www.acris-antibodies.com)