

## Monoclonal Antibody to CD11b - PE

<b>Alternate names:</b>	CD11 antigen-like family member B, CR-3 alpha chain, CR3A, Cell surface glycoprotein MAC-1 subunit alpha, ITGAM, Integrin alpha-M, Leukocyte adhesion receptor MO1, MAC1, Neutrophil adherence receptor
<b>Catalog No.:</b>	SM1068RT
<b>Quantity:</b>	25 Tests
<b>Background:</b>	CD11b forms a heterodimer with CD18 and is expressed by circulating monocytes, granulocytes and also by dendritic reticulum cells in lymphoid tissue. Expression is increased on activated granulocytes. The CD11b molecule is the receptor for C3bi, fibrinogen and clotting factor X.
<b>Uniprot ID:</b>	<a href="#">P11215</a>
<b>NCBI:</b>	<a href="#">NP_000623.2</a>
<b>GeneID:</b>	<a href="#">3684</a>
<b>Host / Isotype:</b>	Mouse / IgG1
<b>Clone:</b>	ICRF44
<b>Immunogen:</b>	Rheumatoid synovial cells and human monocytes. Spleen cells from immunised BALB/c mice were fused with cells of the SP2 mouse myeloma cell line.
<b>Format:</b>	<b>State:</b> Lyophilized purified IgG fraction. <b>Purification:</b> Affinity Chromatography on Protein G <b>Buffer System:</b> PBS containing 0.09% Sodium Azide as preservative and 1% BSA as stabilizer. <b>Label:</b> PE – R. Phycoerythrin (RPE) <b>Reconstitution:</b> Restore with distilled water.
<b>Applications:</b>	Flow Cytometry. Other applications not tested. Optimal dilutions are dependent on conditions and should be determined by the user.
<b>Specificity:</b>	This antibody recognises the CD11b cell surface antigen, also known as the alphaM integrin. <b>Species:</b> Human, Cynomolgus monkey, Baboon, Rhesus Monkey. Other species not tested.
<b>Storage:</b>	Prior to and following reconstitution store the antibody undiluted at 2-8°C. <b>DO NOT FREEZE!</b> This product is photosensitive and should be protected from light. Shelf life: one year from despatch.
<b>Product Citation:</b>	Purified antibody is cited in: 1. Sotirios N. Sotiriou, Valeria V. Orlova, Nadia Al-Fakhri, Eveliina Ihanus, Matina

**For research and in vitro use only. Not for diagnostic or therapeutic work.**

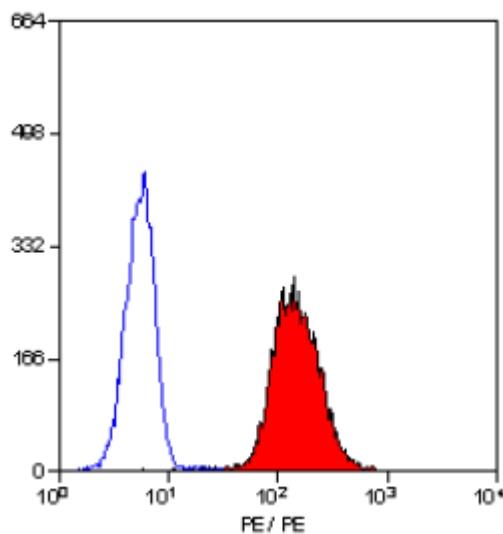
Material Safety Datasheets are available at [www.acris-antibodies.com](http://www.acris-antibodies.com) or on request.

Antibody Hotline - Technical Questions - Antibody Location Service  
Free Call: 0800-2274746 (Germany only) - [www.acris-antibodies.com](http://www.acris-antibodies.com)

Economopoulou, Berend Isermann, Khalil Bdeir, Peter P. Nawroth, Klaus T. Preissner, Carl G. Gahmberg, Marlys L. Koschinsky, and Triantafyllos Chavakis. Lipoprotein(a) in atherosclerotic plaques recruits inflammatory cells through interaction with Mac-1 integrin FASEB J, Jan 2006; 10.1096/fj.05-4857fje.

- General References:**
1. Yoshino, M. et al. (2000) Upgrading of flow cytometric analysis for absolute counts, cytokines and other antigenic molecules of Cynomolgus monkeys (*Macaca fascicularis*) by using anti-human cross-reactive antibodies. *Exp. Anim.* 49: 97 - 110.
  2. Jonker, M. et al. (1989) Reactivity of mAb specific for human CD markers with Rhesus monkey leucocyte. *Leucocyte Typing IV*. Oxford University Press 1058-1063.
  3. Dransfield, I. et al. (1992) Interaction of leukocyte integrins with ligand is necessary but not sufficient for function. *J. Cell Biol.* 116: 1527-1535.
  4. Malhotra, V et al. (1986) Ligand binding by the p150,95 antigen of U937 monocytic cells: properties in common with complement receptor type 3 (CR3). *Eur. J. Immunol.* 16: 1117-1123.

**Pictures:**



Staining of human peripheral blood granulocytes with Mouse Anti Human CD11b-RPE

**For research and in vitro use only. Not for diagnostic or therapeutic work.**

Material Safety Datasheets are available at [www.acris-antibodies.com](http://www.acris-antibodies.com) or on request.

Antibody Hotline - Technical Questions - Antibody Location Service  
Free Call: 0800-2274746 (Germany only) - [www.acris-antibodies.com](http://www.acris-antibodies.com)