

Monoclonal Antibody to CD11b - FITC

Alternate names:	CD11 antigen-like family member B, CR-3 alpha chain, CR3A, Cell surface glycoprotein MAC-1 subunit alpha, ITGAM, Integrin alpha-M, Leukocyte adhesion receptor MO1, MAC1, Neutrophil adherence receptor
Catalog No.:	SM1068F
Quantity:	0.1 mg
Concentration:	0.1 mg/ml
Background:	CD11b is a 165kD molecule also known as the alpha M integrin, MAC-1 and CR3. This molecule is expressed as a heterodimer in association with the beta 2 integrin, and is found upon monocytes, granulocytes, NK cells and some peripheral blood lymphocytes.
Uniprot ID:	P11215
NCBI:	NP_000623.2
GeneID:	3684
Host / Isotype:	Mouse / IgG1
Clone:	ICRF44
Immunogen:	Rheumatoid synovial cells and human monocytes. Spleen cells from immunised BALB/c mice were fused with cells of the mouse Sp2/0 myeloma cell line.
Format:	State: Liquid purified IgG fraction. Purification: Affinity Chromatography on Protein G. Buffer System: PBS, pH7.4 containing 0.09% Sodium Azide as preservative and 1% BSA as stabilizer. Label: FITC – Fluorescein Isothiocyanate Isomer 1
Applications:	Flow Cytometry: Use 10 µl of neat-1/10 diluted antibody to label to label 10e6 cells in 100 µl. Other applications not tested. Optimal dilutions are dependent on conditions and should be determined by the user.
Specificity:	This antibody recognises the CD11b cell surface glycoprotein. Species: Human, Cynomolgus monkey, Baboon, Rhesus Monkey. Does not react with Cat. Other species not tested.
Storage:	Store the antibody undiluted at 2-8°C for one month or (in aliquots) at -20°C for longer. This product is photosensitive and should be protected from light. Avoid repeated freezing and thawing. Shelf life: one year from despatch.
Product Citation:	Purified antibody is cited in: 1. Sotirios N. Sotiriou, Valeria V. Orlova, Nadia Al-Fakhri, Eveliina Ihanus, Matina

For research and in vitro use only. Not for diagnostic or therapeutic work.

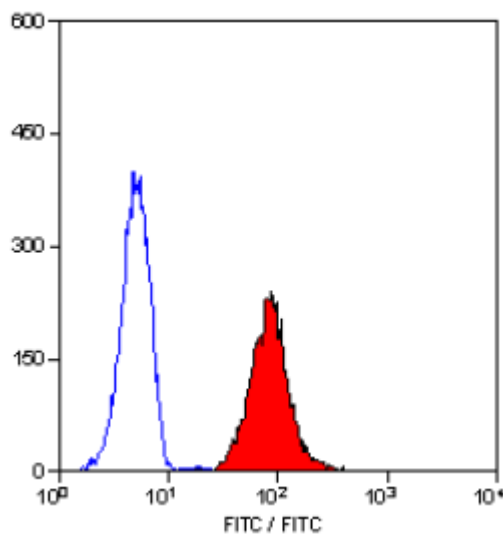
Material Safety Datasheets are available at www.acris-antibodies.com or on request.

Antibody Hotline - Technical Questions - Antibody Location Service
Free Call: 0800-2274746 (Germany only) - www.acris-antibodies.com

Economopoulou, Berend Isermann, Khalil Bdeir, Peter P. Nawroth, Klaus T. Preissner, Carl G. Gahmberg, Marlys L. Koschinsky, and Triantafyllos Chavakis. Lipoprotein(a) in atherosclerotic plaques recruits inflammatory cells through interaction with Mac-1 integrin FASEB J, Jan 2006; 10.1096/fj.05-4857fje.

- General References:**
1. Yoshino, M. et al. (2000) Upgrading of flow cytometric analysis for absolute counts, cytokines and other antigenic molecules of Cynomolgus monkeys (*Macaca fascicularis*) by using anti-human cross-reactive antibodies. *Exp. Anim.* 49: 97 - 110.
 2. Jonker, M. et al. (1989) Reactivity of mAb specific for human CD markers with Rhesus monkey leucocyte. *Leucocyte Typing IV*. Oxford University Press 1058-1063.
 3. Dransfield, I. et al. (1992) Interaction of leukocyte integrins with ligand is necessary but not sufficient for function. *J. Cell Biol.* 116: 1527-1535.
 4. Malhotra, V. et al. (1986) Ligand binding by the p150,95 antigen of U937 monocytic cells: properties in common with complement receptor type 3 (CR3). *Eur. J. Immunol.* 16: 1117-1123.

Pictures:



Staining of human peripheral blood granulocytes with MOUSE ANTI HUMAN CD11b:FITC

For research and in vitro use only. Not for diagnostic or therapeutic work.

Material Safety Datasheets are available at www.acris-antibodies.com or on request.

Antibody Hotline - Technical Questions - Antibody Location Service
Free Call: 0800-2274746 (Germany only) - www.acris-antibodies.com