

## Monoclonal Antibody to CD5 - PE

|                         |   |
|-------------------------|---|
| <b>Alternate names:</b> | CD5, LEU1, Lymphocyte antigen T1/Leu-1, T-cell surface glycoprotein CD5   |
| <b>Catalog No.:</b>     | SM1062R   |
| <b>Quantity:</b>        | 100 Tests   |
| <b>Background:</b>      | <p>CD5 is a 55kDa T lymphocyte single chain transmembrane glycoprotein. It is present on all mature T lymphocytes, on most thymocytes and on many T cell leukemias and lymphomas. It reacts with a subpopulation of activated B cells. CD5/Lyt1 antigen is a monomeric type I transmembrane glycoprotein expressed on thymocytes, T lymphocytes, and a subset of B lymphocytes, but not on natural killer (NK) cells. It has been identified as the major ligand of the B cell antigen CD72. The frequency of CD5+ B cells exhibits strain dependent variation, and the phenotypic, anatomical, functional, developmental, and pathological characteristics of the CD5+ B cells suggest that they may represent a distinct lineage, known as B1 cells. Binding of CD5 on the T cell surface can augment alloantigen or mitogen induced lymphocyte proliferation and induces increased cytosolic free calcium, IL2 secretion, and IL2R expression. It has been proposed that CD5 negatively regulates signal transduction mediated by the T cell and B cell receptors.</p> |
| <b>Uniprot ID:</b>      | <a href="#">P06127</a>  |
| <b>NCBI:</b>            | <a href="#">NP_055022.2</a>   |
| <b>GeneID:</b>          | <a href="#">921</a>   |
| <b>Host / Isotype:</b>  | Mouse / IgG2a   |
| <b>Clone:</b>           | MF7-14.5  |
| <b>Format:</b>          | <p><b>State:</b> Lyophilized purified IgG fraction.<br/><b>Purification:</b> Affinity chromatography on Protein G<br/><b>Buffer System:</b> PBS, pH 7.2 containing 0.09% Sodium Azide as preservative and 1% BSA as stabilizer.<br/><b>Label:</b> PE – R. Phycoerythrin (RPE)<br/><b>Reconstitution:</b> Restore with distilled water.</p>  |
| <b>Applications:</b>    | <p>Flow Cytometry: Use 10 µl of Neat antibody to label 10e6 cells or 100 µl whole blood. Other applications not tested. Optimal dilutions are dependent on conditions and should be determined by the user.</p>   |
| <b>Specificity:</b>     | <p>This antibody recognises the CD5 cell surface glycoprotein, a 67kD antigen expressed by T lymphocytes and by a subset of B lymphocytes.<br/><b>Species:</b> Human.<br/>Other species not tested.</p>   |

**For research and in vitro use only. Not for diagnostic or therapeutic work.**

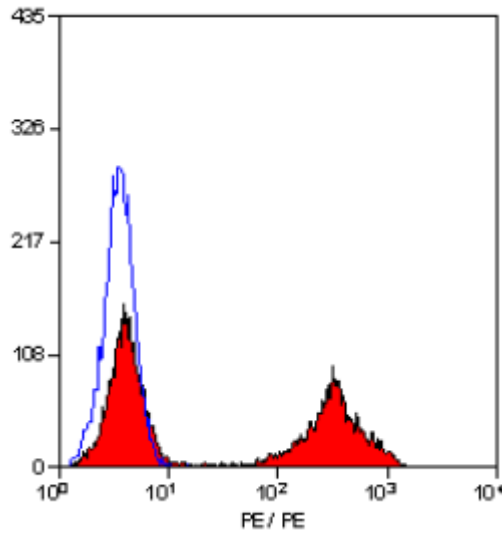
Material Safety Datasheets are available at [www.acris-antibodies.com](http://www.acris-antibodies.com) or on request.

Antibody Hotline - Technical Questions - Antibody Location Service  
Free Call: 0800-2274746 (Germany only) - [www.acris-antibodies.com](http://www.acris-antibodies.com)

**Storage:**

Prior to and following reconstitution store the antibody undiluted at 2-8°C.  
**DO NOT FREEZE!**  
This product is photosensitive and should be protected from light.  
Shelf life: one year from despatch.

**Pictures:**



Staining of human peripheral blood lymphocytes with Mouse Anti Human CD5-RPE

---

**For research and in vitro use only. Not for diagnostic or therapeutic work.**

Material Safety Datasheets are available at [www.acris-antibodies.com](http://www.acris-antibodies.com) or on request.

Antibody Hotline - Technical Questions - Antibody Location Service  
Free Call: 0800-2274746 (Germany only) - [www.acris-antibodies.com](http://www.acris-antibodies.com)