

Monoclonal Antibody to CD3 - FITC

Alternate names:	T-cell surface antigen T3/Leu-4, T-cell surface glycoprotein CD3, T3/Leu-4
Catalog No.:	SM1057FT
Quantity:	25 µg
Concentration:	0.1mg/ml
Background:	CD3 is a surface protein of peripheral blood T cells of molecular weight 19 kD. The pan T cell marker is present on more than 95% of circulating human peripheral T cells.
Uniprot ID:	P07766
NCBI:	NP_000724.1
GeneID:	916
Host / Isotype:	Mouse / IgG1
Clone:	UCHT1
Immunogen:	Human infant thymocytes and lymphocytes from a patient with Sezary Syndrome. Spleen cells from immunised BALB/c mice were fused with cells of the P3/NS1/1-Ag4-1 mouse myeloma cell line.
Format:	State: Liquid purified IgG fraction. Purification: Affinity Chromatography on Protein G. Buffer System: PBS containing 0.09% Sodium Azide as preservative and 1% BSA as stabilizer. Label: FITC – Fluorescein Isothiocyanate Isomer 1
Applications:	Flow Cytometry: Use 10 µl of 1/10 diluted antibody to label 10e6 cells or 100µl of lysed whole peripheral blood. Other applications not tested. Optimal dilutions are dependent on conditions and should be determined by the user.
Specificity:	This antibody recognises a surface protein of peripheral blood T cells of molecular weight 19kD. As a pan T cell marker this antibody is present on more than 95% of circulating human peripheral T cells. Species: Human; Cynomolgus monkey, Monkey, Chimpanzee. Other species not tested.
Storage:	Store the antibody undiluted at 2-8°C for one month or (in aliquots) at -20°C for longer. Avoid repeated freezing and thawing. This product is photosensitive and should be protected from light. Shelf life: one year from despatch.
General References:	1. Beverley, P.C.L. and Callard, R.E. (1981) Distinctive functional characteristics of human T lymphocytes defined by E rosetting or a monoclonal anti T-cell antibody. Eur. J. Immunol. 11: 329-334.

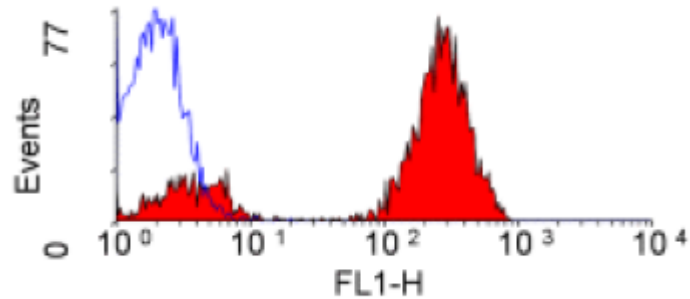
For research and in vitro use only. Not for diagnostic or therapeutic work.

Material Safety Datasheets are available at www.acris-antibodies.com or on request.

Antibody Hotline - Technical Questions - Antibody Location Service
Free Call: 0800-2274746 (Germany only) - www.acris-antibodies.com

- Zarkesh-Esfahani, H. et al. (2001) High-Dose Leptin activates human leukocytes via receptor expression on monocytes. *J. Immunol.* 167: 4593 - 4599.
- Clark, E.A. et al. (1983) Evolution of epitopes on human and non-human primate lymphoid cell surface antigens. *Immunogenetics* 18: 599-615.

Pictures:



SM1057F staining of human peripheral blood lymphocytes.

For research and in vitro use only. Not for diagnostic or therapeutic work.

Material Safety Datasheets are available at www.acris-antibodies.com or on request.

Antibody Hotline - Technical Questions - Antibody Location Service
Free Call: 0800-2274746 (Germany only) - www.acris-antibodies.com