

## Monoclonal Antibody to CD3 - FITC

<b>Alternate names:</b>	T-cell surface antigen T3/Leu-4, T-cell surface glycoprotein CD3, T3/Leu-4
<b>Catalog No.:</b>	SM1057F
<b>Quantity:</b>	0.1 mg
<b>Concentration:</b>	0.1mg/ml
<b>Background:</b>	CD3 is a surface protein of peripheral blood T cells of molecular weight 19 kD. The pan T cell marker is present on more than 95% of circulating human peripheral T cells.
<b>Uniprot ID:</b>	<a href="#">P07766</a>
<b>NCBI:</b>	<a href="#">NP_000724.1</a>
<b>GeneID:</b>	<a href="#">916</a>
<b>Host / Isotype:</b>	Mouse / IgG1
<b>Clone:</b>	UCHT1
<b>Immunogen:</b>	Human infant thymocytes and lymphocytes from a patient with Sezary Syndrome. Spleen cells from immunised BALB/c mice were fused with cells of the P3/NS1/1-Ag4-1 mouse myeloma cell line.
<b>Format:</b>	<b>State:</b> Liquid purified IgG fraction. <b>Purification:</b> Affinity Chromatography on Protein G. <b>Buffer System:</b> PBS containing 0.09% Sodium Azide as preservative and 1% BSA as stabilizer. <b>Label:</b> FITC – Fluorescein Isothiocyanate Isomer 1
<b>Applications:</b>	Flow Cytometry: Use 10 µl of 1/10 diluted antibody to label 10e6 cells or 100µl of lysed whole peripheral blood. Other applications not tested. Optimal dilutions are dependent on conditions and should be determined by the user.
<b>Specificity:</b>	This antibody recognises a surface protein of peripheral blood T cells of molecular weight 19kD. As a pan T cell marker this antibody is present on more than 95% of circulating human peripheral T cells. <b>Species:</b> Human; Cynomolgus monkey, Monkey, Chimpanzee. Other species not tested.
<b>Storage:</b>	Store the antibody undiluted at 2-8°C for one month or (in aliquots) at -20°C for longer. Avoid repeated freezing and thawing. This product is photosensitive and should be protected from light. Shelf life: one year from despatch.
<b>General References:</b>	1. Beverley, P.C.L. and Callard, R.E. (1981) Distinctive functional characteristics of human T lymphocytes defined by E rosetting or a monoclonal anti T-cell antibody. Eur. J. Immunol. 11: 329-334.

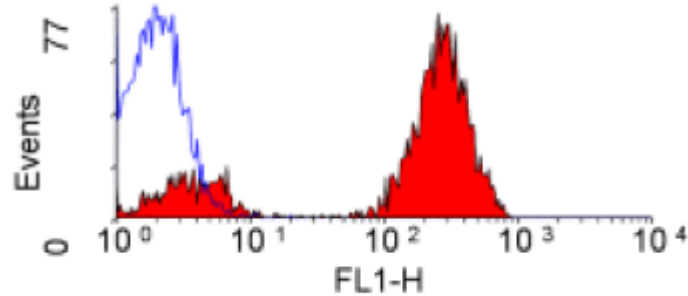
**For research and in vitro use only. Not for diagnostic or therapeutic work.**

Material Safety Datasheets are available at [www.acris-antibodies.com](http://www.acris-antibodies.com) or on request.

Antibody Hotline - Technical Questions - Antibody Location Service  
Free Call: 0800-2274746 (Germany only) - [www.acris-antibodies.com](http://www.acris-antibodies.com)

- Zarkesh-Esfahani, H. et al. (2001) High-Dose Leptin activates human leukocytes via receptor expression on monocytes. *J. Immunol.* 167: 4593 - 4599.
- Clark, E.A. et al. (1983) Evolution of epitopes on human and non-human primate lymphoid cell surface antigens. *Immunogenetics* 18: 599-615.

Pictures:



SM1057F staining of human peripheral blood lymphocytes.

---

**For research and in vitro use only. Not for diagnostic or therapeutic work.**

Material Safety Datasheets are available at [www.acris-antibodies.com](http://www.acris-antibodies.com) or on request.

Antibody Hotline - Technical Questions - Antibody Location Service  
Free Call: 0800-2274746 (Germany only) - [www.acris-antibodies.com](http://www.acris-antibodies.com)