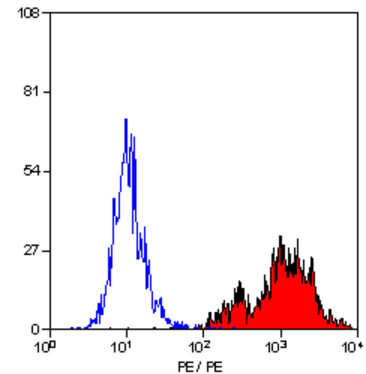


Monoclonal Antibody to Macrophages/Monocytes - RPE

Catalog No.:	SM065R
Quantity/Conc.:	100 Tests
Clone:	MOMA-2
Host/Isotype:	Rat IgG2b
Immunogen:	Mouse lymph node stroma
Format:	This antibody is supplied as lyophilisate, Protein G purified immunoglobulin fraction conjugated to R. Phycoerythrin (RPE) in PBS buffer pH 7.4 with 0.09 % Sodium Azide as preservative and 1 % Bovine Serum Albumin as stabiliser. Reconstitute with 1 ml distilled water.



Staining of mouse peritoneal macrophages with RAT ANTI MOUSE MACROPHAGES/MONOCYTES: RPE (SM065R) following permeabilisation

Applications:	Flow Cytometry (Neat – 1/10, membrane permeabilisation is required). Other applications not tested. Optimal dilutions of this antibody are dependent on conditions and should be determined by the user.
Specificity:	SM065R recognises an intracellular antigen of mouse macrophages and monocytes. It reacts strongly with macrophages in lymphoid organs such as tingible body macrophages and macrophages in T cell dependent areas and is extremely useful in immunohistochemistry. Reacts on all mouse strains tested.
Storage:	Store the antibody prior and following reconstitution undiluted at +4°C. DO NOT FREEZE. This product is photosensitive and should be protected from light. Should this product contain a precipitate we recommend microcentrifugation before use. Shelf life: one year from despatch.
References:	1. Kraal, G., <i>et al.</i> (1987). Macrophages in T and B cell compartments and other tissue macrophages recognised by Monoclonal Antibody MOMA-2. <i>Scand. J. Immunol.</i> 26: 653-661.

SM065R/AV0805

For research and *in vitro* use only. Not for diagnostic or therapeutic work.
Material Safety Datasheets are available at www.acris-antibodies.com or on request.

Antibody Hotline • Technical Questions • Antibody Location Service
Free Call: 0800-2274746 (Germany only)
service@acris-antibodies.de

www.acris-antibodies.com