

Monoclonal Antibody to CD19 - PE

Alternate names:	B-cell marker, B-lymphocyte surface antigen B4, Differentiation antigen CD19, Leu-12
Catalog No.:	SM018RT
Quantity:	25 Tests
Background:	CD19 is a member of the immunoglobulin superfamily and has two Ig like domains. The CD19 molecule is expressed on 100% of the peripheral B cells as defined by expression of kappa or lamda light chains. It is expressed on approximately 10% of normal human peripheral blood cells and approximately 60% of splenic lymphocytes. It is not expressed on granulocytes, monocytes or T cells as defined by CD3 expression. CD19 defines a pan B antigen which is expressed from the earliest stages of B progenitor development, but is lost on terminal differentiation to plasma cells. It may also be present on some early myeloid progenitors, particularly those of the monoblastic type. The CD19 antigen is expressed on approximately 12% of peripheral blood lymphocytes. It appears to be expressed on myeloid leukemia cells, particularly those of monocytic lineage. Leukemia phenotype studies have demonstrated that the earliest and broadest B cell restricted antigen is the CD19 antigen.
Uniprot ID:	P25918
NCBI:	NP_033974.2
GeneID:	12478
Host / Isotype:	Rat / IgG2a
Clone:	6D5
Immunogen:	Human K562 cell line transfected with murine CD19. Spleen cells from immunised rats were fused with cells of the P3X63.Ag8.653 myeloma cell line.
Format:	State: Lyophilized purified IgG fraction. Purification: Affinity chromatography on Protein G. Buffer System: PBS, pH 7.4 containing 0.09% Sodium Azide as preservative and 1% BSA as stabilizer. Label: PE – R. Phycoerythrin (RPE) Reconstitution: Restore in 0.25 ml disilled water
Applications:	Flow Cytometry: Use 10 µl of Neat-1/10 diluted antibody to label 10e6 cells in 100 µl. The Fc region of monoclonal antibodies may bind non-specifically to cells expressing low affinity fc receptors. Other applications not tested. Optimal dilutions are dependent on conditions and should be determined by the user.

For research and in vitro use only. Not for diagnostic or therapeutic work.

Material Safety Datasheets are available at www.acris-antibodies.com or on request.

Antibody Hotline - Technical Questions - Antibody Location Service
Free Call: 0800-2274746 (Germany only) - www.acris-antibodies.com

Specificity:

This antibody recognises the CD19 cell surface antigen, a 95kD glycoprotein expressed by B lymphocytes.

Clone 6D5 has been shown to recognise the same epitope as clone ID3 in cross-competition assays.

Species: Mouse.

Other species not tested.

Storage:

Prior to and following reconstitution store the antibody undiluted at 2-8°C.

DO NOT FREEZE!

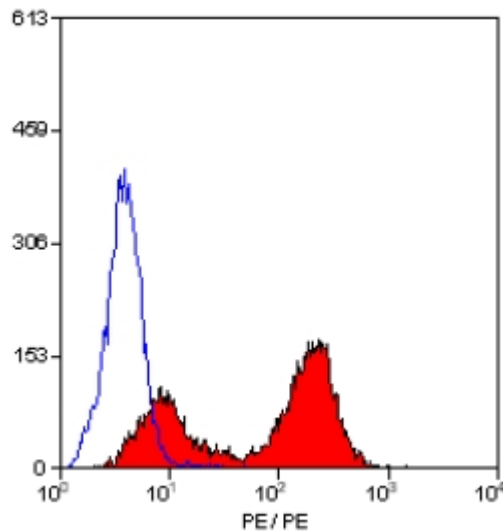
This product is photosensitive and should be protected from light.

Shelf life: one year from despatch.

General References:

1. Krop, I. et al. (1996) Antibody to CD19 suppresses self-renewal of B-1 lymphocytes. Eur. J. Immunol. 26: 238-242.

Pictures:



Staining of Mouse spleen cells with Rat Anti Mouse CD19-RPE.

For research and in vitro use only. Not for diagnostic or therapeutic work.

Material Safety Datasheets are available at www.acris-antibodies.com or on request.

Antibody Hotline - Technical Questions - Antibody Location Service
Free Call: 0800-2274746 (Germany only) - www.acris-antibodies.com