

Monoclonal Antibody to CD11b - PE

Alternate names:	CD11 antigen-like family member B, CR-3 alpha chain, CR3A, Cell surface glycoprotein MAC-1 subunit alpha, ITGAM, Integrin alpha-M, Leukocyte adhesion receptor MO1, MAC1, Neutrophil adherence receptor
Catalog No.:	SM014RT
Quantity:	25 Tests
Background:	<p>CD11b (integrin αM subunit) is a 165 kDa type I transmembrane glycoprotein that non-covalently associates with integrin β2 subunit (CD18); expression of the CD11b chain on the cell surface requires the presence of the CD18 antigen. CD11b/CD18 integrin (Mac-1, CR3) is highly expressed on NK cells, neutrophils, monocytes and less on macrophages. The expression of CD11b increases during monocyte maturation and expression levels vary on tissue macrophages.</p> <p>CD11b/CD18 integrin is implicated in various adhesive interactions of monocytes, macrophages and granulocytes, facilitating their diapedesis, as well as it mediates the uptake of complement coated particles, serving as a receptor for the iC3b fragment of the third complement component.</p> <p>Peritoneal macrophages are reported to express higher levels of CD11b than splenic macrophages.</p>
Uniprot ID:	P05555
NCBI:	10090
Host / Isotype:	Rat / IgG2b
Clone:	M1/70.15
Immunogen:	T cell enriched splenocytes from B10 mice. Spleen cells from an immunised DA rat were fused with cells of the mouse NS1/1.Ag4.1 myeloma cell line.
Format:	<p>State: Lyophilized purified IgG fraction.</p> <p>Purification: Affinity Chromatography on Protein G</p> <p>Buffer System: PBS, pH 7.4 containing 0.09% Sodium Azide as preservative and 1% BSA as stabilizer.</p> <p>Label: PE – R. Phycoerythrin (RPE)</p> <p>Reconstitution: Restore with distilled water.</p>
Applications:	<p>Flow Cytometry: Use 10 μl of neat-1/10 diluted antibody to label 10e6 cells in 100μl. The Fc region of monoclonal antibodies may bind non-specifically to cells expressing low affinity Fc receptors.</p> <p>Other applications not tested. Optimal dilutions are dependent on conditions and should be determined by the user.</p>

For research and in vitro use only. Not for diagnostic or therapeutic work.

Material Safety Datasheets are available at www.acris-antibodies.com or on request.

Antibody Hotline - Technical Questions - Antibody Location Service
Free Call: 0800-2274746 (Germany only) - www.acris-antibodies.com

Specificity:

This antibody recognises the murine CD11b cell surface antigen (also known as the alpha M integrin chain or MAC-1).

Clone M1/70.15 has been reported to block iC3b binding to its receptor. SM014A is recommended for this purpose.

Clone M1/70.15 has been reported to as being suitable for use on PLP fixed paraffin embedded tissue but has not been tested for use on formalin fixed tissue.

Species: Human, Mouse and Rabbit.

Other species not tested.

Storage:

Prior to and following reconstitution store the antibody undiluted at 2-8°C.

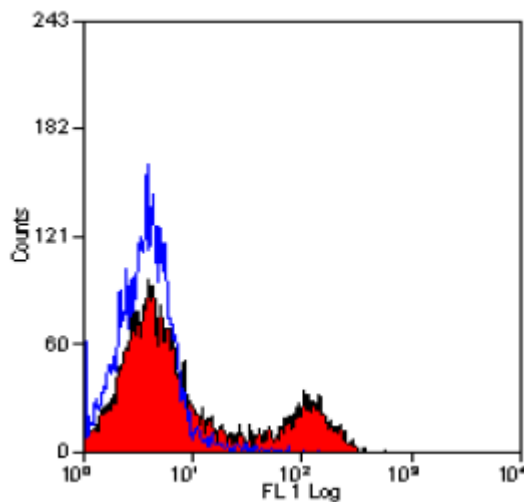
DO NOT FREEZE!

This product is photosensitive and should be protected from light.

Shelf life: one year from despatch.

General References:

1. Springer, T. et al. (1978) Monoclonal xenogeneic antibodies to murine cell surface antigens: identification of novel leukocyte differentiation antigens. *Eur. J. Immunol.* 8:539-551.
2. Springer, T. et al. (1979) Mac-1: a macrophage differentiation antigen identified by a monoclonal antibody. *Eur. J. Immunol.* 9:301-306.
3. Beller, D.I. et al. (1982) Anti Mac-1 selectively inhibits the human type three complement receptor. *J. Exp. Med.* 156:1000-1009.
4. Whiteland, J.L. et al. (1995) Immunohistochemical detection of T cell subsets and other leukocytes in paraffinembedded rat and mouse tissues with monoclonal antibodies. *J. Histochem. Cytochem.* 43:313-320.
5. Klingel, K. et al. (2003) Beta2-microglobulin-associated regulation of interferon-gamma and virus-specific immunoglobulin G confer resistance against the development of chronic coxsackievirus myocarditis. *Am. J. Pathol.* 162 (5):1709-1720.
6. Welt, F.G. et al. (2000) Neutrophil, not macrophage, infiltration precedes neointimal thickening in ballooninjured arteries. *Arterioscler Thromb Vasc Biol.* 20: 2553-2558.

Pictures:

Staining of total mouse peritoneal exudate cells demonstrating labelling of Macrophages with Rat anti Mouse CD11b-RPE

For research and in vitro use only. Not for diagnostic or therapeutic work.

Material Safety Datasheets are available at www.acris-antibodies.com or on request.

Antibody Hotline - Technical Questions - Antibody Location Service
Free Call: 0800-2274746 (Germany only) - www.acris-antibodies.com