

Monoclonal Antibody to CD8 - PE

- Alternate names:** CD8 alpha chain, CD8A, MAL, T-cell surface glycoprotein CD8 alpha chain, T-lymphocyte differentiation antigen T8/Leu-2
- Catalog No.:** SM011R
- Quantity:** 100 Tests
- Background:** The CD8 antigen is a cell surface glycoprotein found on most cytotoxic T lymphocytes that mediates efficient cell to cell interactions within the immune system. The CD8 antigen, acting as a coreceptor, and the T cell receptor on the T lymphocyte recognize antigen displayed by an antigen presenting cell (APC) in the context of class I MHC molecules. The functional coreceptor is either a homodimer composed of two alpha chains, or a heterodimer composed of one alpha and one beta chain. Both alpha and beta chains share significant homology to immunoglobulin variable light chains.
- Uniprot ID:** [P01731](#)
- NCBI:** [NP_001074579.1](#)
- GeneID:** [12525](#)
- Host / Isotype:** Rat / IgG2a
- Clone:** KT15
- Immunogen:** T cell clone, C6.
Spleen cells from a Sprague Dawley rat immunised with the C6 T cell clone were fused with cells of the NSO mouse myeloma cell line.
- Format:** **State:** Lyophilized purified IgG fraction.
Buffer System: PBS containing 0.09% Sodium Azide as preservative and 1% BSA as stabilizer.
Label: PE – R. Phycoerythrin (RPE)
Reconstitution: Restore with distilled water:
SM011R with 1.0 ml
SM011RT with 0.25 ml
SM011RX with 5.0 ml
- Applications:** Flow Cytometry: Use 10 µl of Neat-1/10 diluted antibody to label 10e6 cells in 100µl. The Fc region of monoclonal antibodies may bind non-specifically to cells expressing low affinity Fc receptors.
Other applications not tested. Optimal dilutions are dependent on conditions and should be determined by the user.

For research and in vitro use only. Not for diagnostic or therapeutic work.

Material Safety Datasheets are available at www.acris-antibodies.com or on request.

Antibody Hotline - Technical Questions - Antibody Location Service
Free Call: 0800-2274746 (Germany only) - www.acris-antibodies.com

Specificity:

This antibody reacts to Ly2.1 and Ly2.2 cells.
Reacts with the CD8 alpha chain (non polymorphic).
Weakly cytotoxic.
Species: Mouse.
Other species not tested.

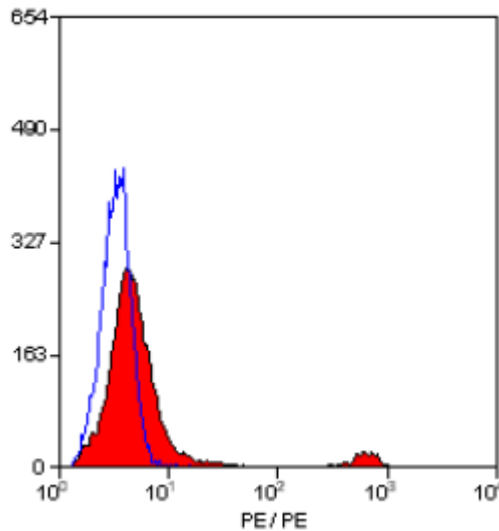
Storage:

Prior to and following reconstitution store the antibody undiluted at 2-8°C.
DO NOT FREEZE!
This product is photosensitive and should be protected from light.
Shelf life: one year from despatch.

General References:

1. Tomonari, K. et al. (1988) T-cell receptor-specific monoclonal antibodies against a V beta 11 positive mouse T-cell clone. Immunogenetics. 28(6): 445-451.

Pictures:



Staining of Mouse spleen cells with Rat Anti Mouse CD8 ALPHA-RPE

For research and in vitro use only. Not for diagnostic or therapeutic work.

Material Safety Datasheets are available at www.acris-antibodies.com or on request.

Antibody Hotline - Technical Questions - Antibody Location Service
Free Call: 0800-2274746 (Germany only) - www.acris-antibodies.com