

Monoclonal Antibody to CD8 - FITC

Alternate names:	CD8 alpha chain, CD8A, MAL, T-cell surface glycoprotein CD8 alpha chain, T-lymphocyte differentiation antigen T8/Leu-2
Catalog No.:	SM011F
Quantity:	0.1 mg
Concentration:	0.1 mg/ml
Background:	The CD8 antigen is a cell surface glycoprotein found on most cytotoxic T lymphocytes that mediates efficient cell to cell interactions within the immune system. The CD8 antigen, acting as a coreceptor, and the T cell receptor on the T lymphocyte recognize antigen displayed by an antigen presenting cell (APC) in the context of class I MHC molecules. The functional coreceptor is either a homodimer composed of two alpha chains, or a heterodimer composed of one alpha and one beta chain. Both alpha and beta chains share significant homology to immunoglobulin variable light chains.
Uniprot ID:	P01731
NCBI:	NP_001074579
GeneID:	12525
Host / Isotype:	Rat / IgG2a
Clone:	KT15
Immunogen:	T cell clone, C6. Spleen cells from immunised SD rats were fused with cells of the NSO mouse myeloma cell line.
Format:	State: Liquid purified IgG Purification: Affinity chromatography on Protein A Buffer System: PBS, pH7.4 containing 0.09% Sodium Azide and 1% Bovine Serum Albumin Label: FITC – Fluorescein Isothiocyanate Isomer 1
Applications:	Flow cytometry: Neat - 1/10; Use 10µl of the suggested working dilution to label 10e6 cells in 100µl; The Fc region of monoclonal antibodies may bind non-specifically to cells expressing low affinity Fc receptors. Other applications not tested. Optimal dilutions are dependent on conditions and should be determined by the user.
Specificity:	This antibody reacts with a non-polymorphic epitope on the CD8 alpha chain. Stains mouse Ly2.1 and Ly2.2 cells. Species: Mouse. Other species not tested.

For research and in vitro use only. Not for diagnostic or therapeutic work.

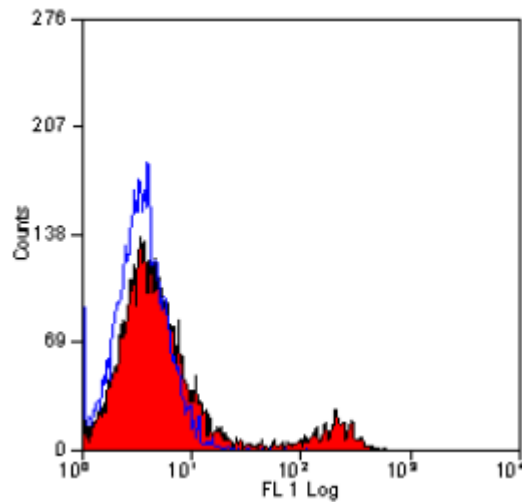
Material Safety Datasheets are available at www.acris-antibodies.com or on request.

Antibody Hotline - Technical Questions - Antibody Location Service
Free Call: 0800-2274746 (Germany only) - www.acris-antibodies.com

Storage: Store the antibody undiluted at 2-8°C for one month or (in aliquots) at -20°C for longer. Avoid repeated freezing and thawing. This product is photosensitive and should be protected from light. Shelf life: one year from despatch.

General References: 1. Tomonari, K. et al. (1988) T-cell receptor-specific monoclonal antibodies against a V beta 11 positive mouse T-cell clone. Immunogenetics. 28(6): 445-451.

Pictures:



Staining of mouse spleen with RAT ANTI MOUSE CD8 ALPHA: FITC

For research and in vitro use only. Not for diagnostic or therapeutic work.

Material Safety Datasheets are available at www.acris-antibodies.com or on request.

Antibody Hotline - Technical Questions - Antibody Location Service
Free Call: 0800-2274746 (Germany only) - www.acris-antibodies.com