

## Monoclonal Antibody to CD3 - FITC

<b>Alternate names:</b>	T-cell surface antigen T3/Leu-4, T-cell surface glycoprotein CD3, T3/Leu-4
<b>Catalog No.:</b>	SM003F
<b>Quantity:</b>	0.1 mg
<b>Concentration:</b>	0.1 mg/ml
<b>Background:</b>	<p>T cell activation through the antigen receptor (TCR) involves the cytoplasmic tails of the CD3 subunits: CD3 gamma, CD3 delta, CD3 epsilon and CD3 zeta. These CD3 subunits are structurally related members of the immunoglobulins super family encoded by closely linked genes on human chromosome 11. The CD3 components have long cytoplasmic tails that associate with cytoplasmic signal transduction molecules. This association is mediated at least in part by a double tyrosine based motif present in a single copy in the CD3 subunits. CD3 may play a role in TCR induced growth arrest, cell survival and proliferation. The CD3 antigen is present on 68-82% of normal peripheral blood lymphocytes, 65-85% of thymocytes and Purkinje cells in the cerebellum. It is never expressed on B or NK cells. Decreased percentages of T lymphocytes may be observed in some autoimmune diseases.</p>
<b>Uniprot ID:</b>	<a href="#">P22646</a>
<b>NCBI:</b>	<a href="#">NP_031674.1</a>
<b>GeneID:</b>	<a href="#">12501</a>
<b>Host / Isotype:</b>	Rat / IgG2a
<b>Clone:</b>	KT3
<b>Immunogen:</b>	Spleen cells from immunised SD rats were fused with cells of the NSO mouse myeloma cell line.
<b>Format:</b>	<p><b>State:</b> Liquid purified IgG fraction <b>Buffer System:</b> PBS, pH 7.2 containing 0.09% Sodium Azide as preservative and 1% BSA as stabilizer <b>Label:</b> FITC – Fluorescein Isothiocyanate Isomer 1</p>
<b>Applications:</b>	<p><b>Flow Cytometry:</b> Use 10 µl of Neat-1/10 diluted antibody to label 10e6 cells or 100 µl whole blood. For optimal staining incubations should be performed at RT. The Fc region of monoclonal antibodies may bind non-specifically to cells expressing low affinity Fc receptors.</p> <p>Other applications not tested. Optimal dilutions are dependent on conditions and should be determined by the user.</p>
<b>Specificity:</b>	<p>This antibody recognises the CD3 antigen which is expressed by mature T cells. <b>Species:</b> Mouse. Other species not tested.</p>

**For research and in vitro use only. Not for diagnostic or therapeutic work.**

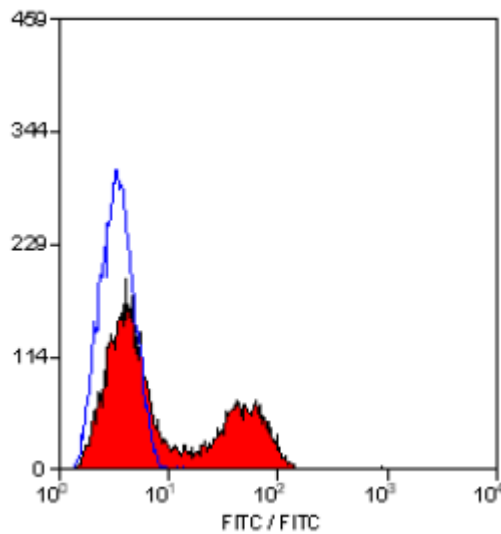
Material Safety Datasheets are available at [www.acris-antibodies.com](http://www.acris-antibodies.com) or on request.

Antibody Hotline - Technical Questions - Antibody Location Service  
Free Call: 0800-2274746 (Germany only) - [www.acris-antibodies.com](http://www.acris-antibodies.com)

**Storage:** Store the antibody undiluted at 2-8°C for one month or (in aliquots) at -20°C for longer. This product is photosensitive and should be protected from light. Avoid repeated freezing and thawing. Shelf life: one year from despatch.

**General References:** 1. Tomonari, K. (1988) T-cell receptor-specific monoclonal antibodies against a V beta 11-positive mouse T-cell clone. *Immunogenetics* 28: 455-458.  
2. Lacroix-Lamande, S. et al. (2002). Role of gamma interferon in chemokine expression in the ileum of mice and in a murine intestinal cell line after *Cryptosporidium parvum* infection. *Infect. Immun.* 70(4): 2090-2099.  
3. Tomonari, K. (1988) T-cell receptor-specific monoclonal antibodies against a V beta 11-positive mouse T-cell clone. *Immunogenetics* 28: 445-451.

**Pictures:**



Staining of Mouse peripheral blood lymphocytes with Rat Anti Mouse CD3 antibody FITC conjugated

**For research and in vitro use only. Not for diagnostic or therapeutic work.**

Material Safety Datasheets are available at [www.acris-antibodies.com](http://www.acris-antibodies.com) or on request.

Antibody Hotline - Technical Questions - Antibody Location Service  
Free Call: 0800-2274746 (Germany only) - [www.acris-antibodies.com](http://www.acris-antibodies.com)