

Polyclonal Antibody to Goat IgG (H+L chain) - FITC

Alternate names:	Goat Immunoglobulin G
Catalog No.:	R1317F
Quantity:	2 mg
Concentration:	2.0 mg/ml (by UV absorbance at 280 nm)
Host:	Rabbit
Immunogen:	Goat IgG whole molecule
Format:	State: Lyophilized purified Ig fraction Purification: Immunoaffinity Chromatography using Goat IgG coupled to agarose beads followed by solid phase adsorption(s) to remove any unwanted reactivities. Buffer System: 0.02M Potassium Phosphate, 0.15M Sodium Chloride, pH 7.2 Preservatives: 0.01% (w/v) Sodium Azide Stabilizers: 10 mg/ml BSA (IgG and Protease free) Label: FITC – Fluorescein isothiocyanate (Molecular Weight 390 daltons) <i>Absorption / Emission:</i> 495 nm / 528 nm <i>Molar Ratio:</i> 4.2 moles FITC per mole of IgG Reconstitution: Restore with 1.0 ml of deionized water (or equivalent).
Applications:	Suitable for Immunofluorescence Microscopy and Flow Cytometry or FACS analysis as well as other antibody based fluorescent assays requiring lot-to-lot consistency. Recommended Dilutions: FLISA: 1/10,000-1/50,000. Flow Cytometry: 1/500-1/2,500. IF Microscopy: 1/1,000-1/5,000. Other applications not tested. Optimal dilutions are dependent on conditions and should be determined by the user.
Specificity:	Assay by Immunoelectrophoresis resulted in a single precipitin arc against anti-Fluorescein, anti-Rabbit Serum, Goat IgG and Goat Serum. Species: Goat. Other species not tested.
Storage:	Store vial at 2-8°C prior to restoration. Restore with deionized water or equivalent. Centrifuge product if not completely clear after standing at room temperature. This product is stable for several weeks at 2-8° C as an undiluted liquid. Dilute only prior to immediate use. For extended storage reconstitute product with 50% glycerol instead of water and then aliquot contents and freeze at -20°C or below. Avoid cycles of freezing and thawing. Shelf life: One year from despatch.

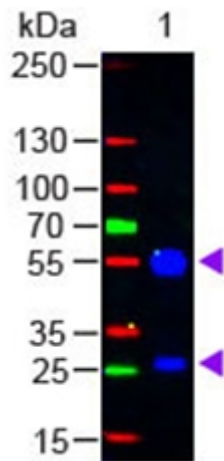
General References: 1. The and Feltkamp, Immunology 18; 865, 1970. (Conjugation)

For research and in vitro use only. Not for diagnostic or therapeutic work.

Material Safety Datasheets are available at www.acris-antibodies.com or on request.

Antibody Hotline - Technical Questions - Antibody Location Service
Free Call: 0800-2274746 (Germany only) - www.acris-antibodies.com

Pictures:



Western Blot of Rabbit anti-Goat IgG (H&L) Antibody Fluorescein Conjugated:

Lane 1: Goat IgG, Load: 50 ng per lane Secondary antibody: Goat IgG (H&L) Antibody Fluorescein Conjugated at 1/1,000 for 60 min at RT

Block: MB-070 for 30 min at RT

Predicted/Observed size: 55 and 28 kDa, 55 and 28 kDa

For research and in vitro use only. Not for diagnostic or therapeutic work.

Material Safety Datasheets are available at www.acris-antibodies.com or on request.

Antibody Hotline - Technical Questions - Antibody Location Service
Free Call: 0800-2274746 (Germany only) - www.acris-antibodies.com