

## Monoclonal Antibody to CD45 / LCA (CD45R) - Purified

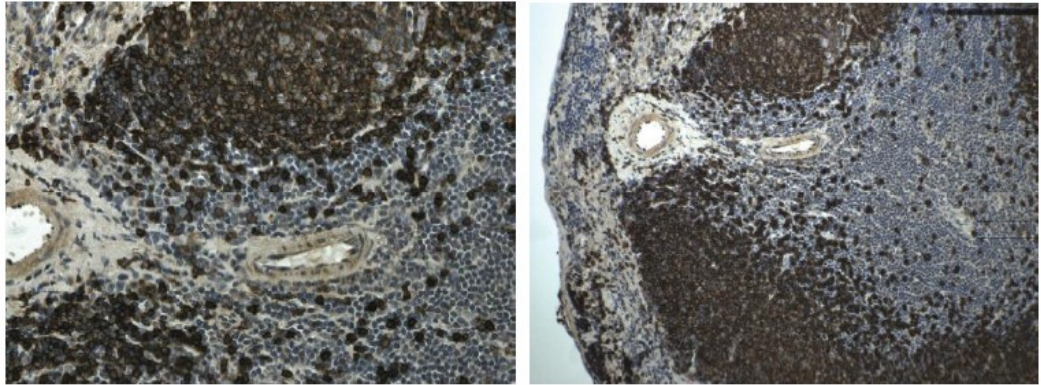
<b>Alternate names:</b>	L-CA, Leukocyte common antigen, PTPRC, Receptor-type tyrosine-protein phosphatase C, T200
<b>Catalog No.:</b>	DM3535P
<b>Quantity:</b>	0.1 mg
<b>Background:</b>	CD45R is an isoform of CD45, also known as B220. It is a member of the protein tyrosine phosphatase (PTP) family with a molecular weight approximately 180-240 kD. CD45R is expressed on B cells (at all developmental stages from pro-B cells through mature B cells), activated B cells, subsets of T and NK cells.
<b>Uniprot ID:</b>	<a href="#">P06800</a>
<b>NCBI:</b>	<a href="#">10090</a>
<b>Host / Isotype:</b>	Rat / IgG2
<b>Clone:</b>	9F14
<b>Immunogen:</b>	Mouse Leukemia virus-induced pre-B tumor cells
<b>Format:</b>	<b>State:</b> Lyophilized (0.2 µm filtered) purified Ig fraction. <b>Purification:</b> Protein A/G Affinity Chromatography. <b>Reconstitution:</b> Restore antibody with 500 µl sterile PBS (final concentration 0.4 mg/ml).
<b>Applications:</b>	<b>FACS analysis:</b> 1/100-1/400. <b>Immunohistochemistry on Paraffin Sections:</b> 1/50-1/200. Other applications not tested. Optimal dilutions are dependent on conditions and should be determined by the user.
<b>Specificity:</b>	CD45R is commonly used as a pan-B cell marker; however, CD19 may be more appropriate for B cell specificity. <b>Species:</b> Mouse. Other species not tested.
<b>Storage:</b>	Prior to reconstitution store at -70°C. Following reconstitution store the antibody (in aliquots) at -20°C for 6 month. Avoid repeated freezing and thawing. Shelf life: one year from despatch.

**For research and in vitro use only. Not for diagnostic or therapeutic work.**

Material Safety Datasheets are available at [www.acris-antibodies.com](http://www.acris-antibodies.com) or on request.

Antibody Hotline - Technical Questions - Antibody Location Service  
Free Call: 0800-2274746 (Germany only) - [www.acris-antibodies.com](http://www.acris-antibodies.com)

Pictures:



CD45R (B220) immunohistochemistry staining of paraffin sections of mouse Spleen from LPS exposed animals.

**For research and in vitro use only. Not for diagnostic or therapeutic work.**

Material Safety Datasheets are available at [www.acris-antibodies.com](http://www.acris-antibodies.com) or on request.

Antibody Hotline - Technical Questions - Antibody Location Service  
Free Call: 0800-2274746 (Germany only) - [www.acris-antibodies.com](http://www.acris-antibodies.com)