

Monoclonal Antibody to MHC Class II (RT1D) - FITC

Catalog No.:	CL121F
Quantity:	0.1 mg
Concentration:	0.1 mg/ml
Host / Isotype:	Mouse / IgG1
Clone:	OX-17
Immunogen:	Rat spleen membrane glycoproteins depleted of Ia-A antigens. Immunocyte Donor: BALB/c spleen Fusion Partner: X63 Ag8.653
Format:	State: Liquid purified Ig Purification: Protein G Chromatography Buffer System: PBS, 0.02% NaN ₃ and EIA grade BSA as a stabilizing protein to bring total protein concentration to 4-5 mg/ml Label: FITC
Applications:	Flow Cytometry. Other applications not tested. Optimal dilutions are dependent on conditions and should be determined by the user.
Specificity:	This monoclonal antibody recognizes a monomorphic determinant on the α chain of the rat Ia antigen and appears to be the rat homologue of mouse Ia-E. It recognizes the rat Ia product present on B, but not T cells from lymph node or thoracic duct lymph. It does not bind to thymocytes or erythrocytes. The antibody does not cross-react with rat Ia-A or mouse Ia-E antigen, but rabbit antibody raised against the antibody affinity column-purified MRC OX-17 antigen cross-reacted on tissues of mice expressing Ia-E mouse antigen but not on those mouse strains that were Ia-E antigen negative. Species: Rat. Other species not tested.
Storage:	Store the antibody undiluted at 2-8°C for one month or (in aliquots) at -20°C for longer. Avoid repeated freezing and thawing. This antibody is photosensitive and should be protected from light. Shelf life: one year from despatch.
General References:	1. Kearney, J.F., Radbruch, A., Leisegang, B. and K. Rajewsky. (1979) A New mouse myeloma cell line that has lost Immunoglobulin expression but permits the construction of antibody-secreting hybrid cell lines. <i>J. Immunol.</i> 123, 1548-1550. 2. Fukumoto, T., McMaster, W.R. and A.F. Williams. (1982) Mouse monoclonal antibodies against rat major histocompatibility antigens. Two Ia antigens and expression of Ia and Class I antigens in rat thymus. <i>Eur. J. Immunol.</i> 12, 237-243. 3. Barclay, A.N. (1981) Different reticular elements in rat lymphoid tissue identified by localization of Ia, thy-1 and MRC OX-2 antigens. <i>Immunology.</i> 42, 593-600.

For research and in vitro use only. Not for diagnostic or therapeutic work.

Material Safety Datasheets are available at www.acris-antibodies.com or on request.

Antibody Hotline - Technical Questions - Antibody Location Service
Free Call: 0800-2274746 (Germany only) - www.acris-antibodies.com

Protocols:**FLOW CYTOMETRY ANALYSIS:****Method:**

1. Prepare a cell suspension in media A. For cell preparations, deplete the red blood cell population with Lympholyte®-Rat Cell Separation Medium.
2. Wash 2 times.
3. Resuspend the cells to a concentration of 2×10^7 cells/ml in media A. Add 50 μ l of this suspension to each tube (each tube will then contain 1×10^6 cells, representing 1 test).
4. To each tube, add 0.05-0.1 μ g* of this Ab per 10^6 cells.
5. Vortex the tubes to ensure thorough mixing of antibody and cells.
6. Incubate the tubes for 30 minutes at 4°C. (It is recommended that the tubes are protected from light, since most fluorochromes are light sensitive.)
7. Wash 2 times at 4°C.
8. Resuspend the cell pellet in 50 μ l ice cold media B.
9. Transfer to suitable tubes for flow cytometric analysis containing 15 μ l of propidium iodide at 0.5 mg/ml in PBS. This stains dead cells by intercalating in DNA.

Media:

- A. Phosphate buffered saline (pH 7.2) + 5% normal serum of host species + sodium azide (100 μ l of 2M sodium azide in 100 mls).
- B. Phosphate buffered saline (pH 7.2) + 0.5% Bovine serum albumin + sodium azide (100 μ l of 2M sodium azide in 100 mls).

Results - Tissue Distribution:

Rat Strain: Fischer

Cell Concentration: 1×10^6 cells per test

Antibody Concentration Used: 0.1 μ g/ 10^6 cells

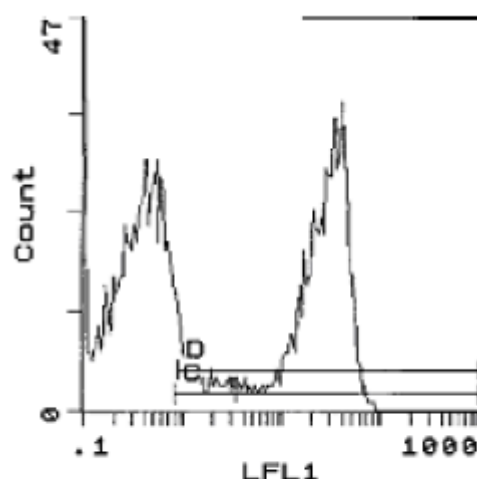
Isotypic Control: FITC Mouse IgG1

Cell Source Percentage of cells stained above control:

Thymus 10.2%

Spleen 49.0%

Lymph Node 27.9%

Pictures:

Cell Source: Spleen

Percentage of cells stained above control: 49.0%

For research and in vitro use only. Not for diagnostic or therapeutic work.

Material Safety Datasheets are available at www.acris-antibodies.com or on request.

Antibody Hotline - Technical Questions - Antibody Location Service
Free Call: 0800-2274746 (Germany only) - www.acris-antibodies.com