

Monoclonal Antibody to T Cell Receptor (TCR) alpha/beta - FITC

Alternate names:	TCRA, TCRB, T-Cell Receptor alpha, T-Cell Receptor beta, T-Cell Receptor alpha beta
Catalog No.:	CL075F
Quantity:	0.1 mg
Concentration:	0.1 mg/ml
Host / Isotype:	Hamster / IgG
Clone:	H57-597
Immunogen:	Affinity-purified DO-11.10 TCR Donor: Armenian Hamster Fusion Partner: Mouse myeloma variant P3X63 Ag.653
Format:	State: Liquid purified Purification: Protein G Chromatography Buffer System: PBS, 0.02% NaN ₃ and EIA grade BSA as a stabilizing protein to bring total protein concentration to 4-5 mg/ml. Label: FITC
Applications:	Flow Cytometry. Immunohistochemistry on frozen sections. Other applications not tested. Optimal dilutions are dependent on conditions and should be determined by the user.
Specificity:	This anti-mouse ab T cell receptor monoclonal antibody reacts with the surface of all ab TCR bearing cells and does not react with receptors on gd TCR positive T cells. This monoclonal antibody when used in an immobilized form was able to activate all ab TCR bearing T cell hybridomas tested to produce IL-2. Use of this antibody in conjunction with an anti-CD3e monoclonal antibody allows for accurate measurements of the mutually exclusive sub-populations of ab TCR and gd TCR bearing T cells. Species: Mouse. Others not tested.
Storage:	Store the antibody undiluted at 2-8°C for one month or (in aliquots) at -20°C for longer. Avoid repeated freezing and thawing. This product is photosensitive and should be protected from light. Shelf life: one year from despatch.
General References:	1. Kubo, R.T. Born, W., Kappler, J.W., Marrack, P. and M. Pigeon. 1989. Characterization of a Monoclonal Antibody Which Detects All Murine ab T Cell Receptors. J. of Immunol. 142:2736-2742. 2. Goodman, T., Lefrancois, L. 1989. Intraepithelial Lymphocytes. J. of Exp. Med. 170:

For research and in vitro use only. Not for diagnostic or therapeutic work.

Material Safety Datasheets are available at www.acris-antibodies.com or on request.

Antibody Hotline - Technical Questions - Antibody Location Service
Free Call: 0800-2274746 (Germany only) - www.acris-antibodies.com

1569-1581.

3. Gross, J.A., E. Callas and J.P. Allison. 1992. Identification and Distribution of the Costimulatory Receptor CD28 in the Mouse. *J. of Immunol.* 149: 380-388.

4. Palathumpat, V. et al. 1992. Treatment of BCL1 Leukemia by Transplantation of Low Density Fractions of Allogeneic Bone Marrow and Spleen Cells. *J. of Immunol.* 148: 3319-3326.

5. Paliwal, V. et al. 1997. Recombinant Soluble ab TCR Receptors Protect T Cells from Immune Suppression. *J. of Immunol.* 159: 1718-1727.

6. Skarstein, K. et al. 1994. Oligoclonality of T cells in salivary glands of autoimmune MRL/lpr mice. *Immunology.* 81:497-501.

Protocols:**FLOW CYTOMETRY ANALYSIS:****Method:**

1. Prepare a cell suspension in media A. For cell preparations, deplete the red blood cell population with Lympholyte®-M cell separation medium.
2. Wash 2 times.
3. Resuspend the cells to a concentration of 2x10⁷ cells/ml in media A. Add 50 µl of this suspension to each tube (each tube will then contain 1 x 10⁶ cells, representing 1 test).
4. To each tube, add 0.2 - 0.1 µg* of this Ab per 10⁶ cells.
5. Vortex the tubes to ensure thorough mixing of antibody and cells.
6. Incubate the tubes for 30 minutes at 4°C. (It is recommended that the tubes are protected from light, since most fluorochromes are light sensitive.)
7. Wash 2 times at 4°C.
8. Resuspend the cell pellet in 50 µl ice cold media B.
9. Transfer to suitable tubes for flow cytometric analysis containing 15 µl of propidium iodide at 0.5 mg/ml in PBS. This stains dead cells by intercalating in DNA.

Media:

A. Phosphate buffered saline (pH 7.2) + 5% normal serum of host species + sodium azide (100 µl of 2M sodium azide in 100 mls).

B. Phosphate buffered saline (pH 7.2) + 0.5% Bovine serum albumin + sodium azide (100 µl of 2M sodium azide in 100 mls).

Results - Tissue Distribution by Flow Cytometry Analysis:

Mouse Strain: BALB/c

Cell Concentration: 1x10⁶ cells per test

Antibody Concentration Used: 0.2 µg/10⁶ cells

Isotypic Control: FITC Hamster IgG

For research and in vitro use only. Not for diagnostic or therapeutic work.

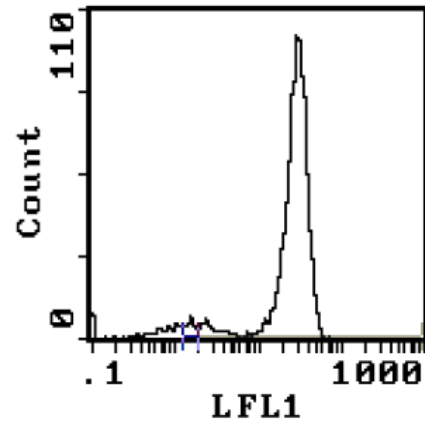
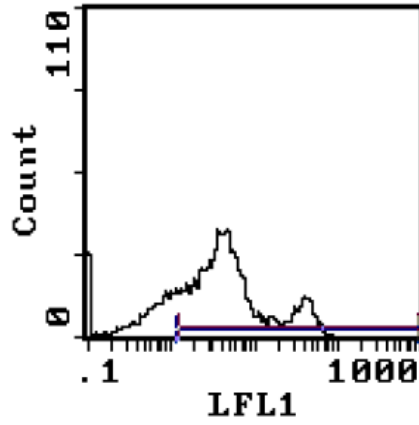
Material Safety Datasheets are available at www.acris-antibodies.com or on request.

Antibody Hotline - Technical Questions - Antibody Location Service
Free Call: 0800-2274746 (Germany only) - www.acris-antibodies.com

Pictures:

A/

B/



For research and in vitro use only. Not for diagnostic or therapeutic work.

Material Safety Datasheets are available at www.acris-antibodies.com or on request.

Antibody Hotline - Technical Questions - Antibody Location Service
Free Call: 0800-2274746 (Germany only) - www.acris-antibodies.com