

Polyclonal Antibody to Non-Neural Enolase (ENO1) - Purified

Alternate names:	2-phospho-D-glycerate hydro-lyase, C-myc promoter-binding protein, ENO1L1 Non-neural enolase, Enolase 1, MBP-1, MBPB1, MPB-1, MPB1, NNE, Phosphopyruvate hydratase, Plasminogen-binding protein
Catalog No.:	BP087
Quantity:	1 ml
Concentration:	5.0 mg/ml (by OD 280 nm)
Background:	Non Neuronal Enolase (ENO1) is an isoform of mammalian enolase and is composed of 2 alpha subunits. The gene for ENO1 encodes alpha-enolase, a homodimeric soluble enzyme, and also encodes a shorter monomeric structural lens protein, tau-crystallin. The two proteins are made from the same message. The full length protein, the isoenzyme, is found in the cytoplasm. The shorter protein is produced from an alternative translation start, is localized to the nucleus, and has been found to bind to an element in the c-myc promoter. Non Neuronal Enolase can be as a diagnostic marker for many tumors; as a marker for endometriosis and in the heterodimeric form, alpha/gamma, as a marker for hypoxic brain injury after cardiac arrest. It has been identified as an autoantigen in Hashimoto encephalopathy (associated with Hashimoto thyroiditis).
Uniprot ID:	P06733
NCBI:	NP_001188412.1
GeneID:	2023
Host:	Rabbit
Immunogen:	Native human NNE.
Format:	State: Liquid purified Ig fraction Purification: Affinity Chromatography on Protein G Buffer System: PBS, containing 0.09% Sodium Azide as preservative
Applications:	Immunohistochemistry on Frozen and Paraffin Sections (each 1/25-1/100). ELISA. Western blot. Other applications not tested. Optimal dilutions are dependent on conditions and should be determined by the user.
Specificity:	This antibody detects Non-neuronal enolase, and demonstrates less than 0.1% cross-reactivity with non-specific enolase. Species: Human. Other species not tested.

For research and in vitro use only. Not for diagnostic or therapeutic work.

Material Safety Datasheets are available at www.acris-antibodies.com or on request.

Antibody Hotline - Technical Questions - Antibody Location Service
Free Call: 0800-2274746 (Germany only) - www.acris-antibodies.com

Storage:

Store the antibody undiluted at 2-8°C for one month or (in aliquots) at -20°C for longer.
Centrifuge vial before opening.
Avoid repeated freezing and thawing.
Shelf life: One year from despatch.

Pictures:

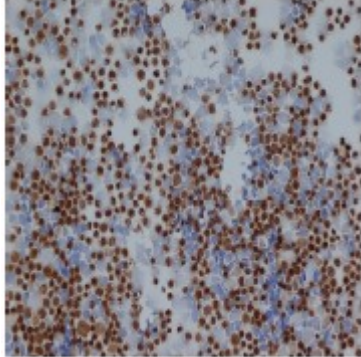


Figure 1. Staining of Jurkat cells with rabbit anti human NSE.