

Monoclonal Antibody to CD163 - FITC

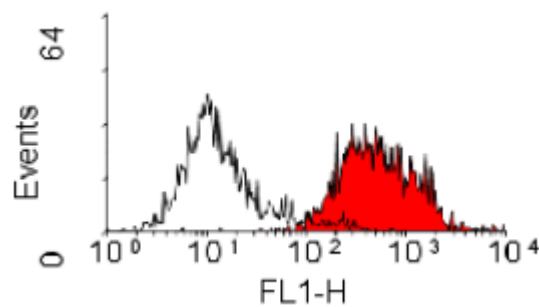
Alternate names:	Hemoglobin scavenger receptor, M130, Macrophage marker, Scavenger receptor cysteine-rich type 1 protein M130
Catalog No.:	BM4001F
Quantity:	0.1 mg
Concentration:	0.1 mg/ml
Background:	CD163 is expressed by approximately 50% of peritoneal macrophages, a subset of splenic macrophages, and by macrophages in most other tissues. However, it is not expressed by monocytes, alveolar macrophages or microglial cells.
Uniprot ID:	Q86VB7
NCBI:	NP_004235
GeneID:	9332
Host / Isotype:	Mouse / IgG1
Clone:	ED2
Immunogen:	Rat Spleen cell homogenate. Spleen cells from immunised BALB/c mice were fused with cells of the SP2/O-Ag 14 mouse myeloma cell line.
Format:	State: Liquid purified IgG Purification: Affinity chromatography on Protein A Buffer System: PBS, pH 7.2, containing 0.09% Sodium Azide and 1% Bovine Serum Albumin Label: FITC – Fluorescein Isothiocyanate Isomer 1
Applications:	Flow cytometry (neat - 1/10): Use 10 µl of the suggested working dilution to label 10e6 cells in 100 µl. Other applications not tested. Optimal dilutions are dependent on conditions and should be determined by the user.
Specificity:	This antibody recognises the CD163 cell surface glycoprotein, a 175 kD molecule also known as ED2. Species: Rat. Other species not tested.
Storage:	Store the antibody undiluted at 2-8°C for one month or (in aliquots) at -20°C for longer. Avoid repeated freezing and thawing. This product is photosensitive and should be protected from light. Shelf life: one year from despatch.
General References:	1. Dijkstra, C.D. et al. (1985) The heterogeneity of mononuclear phagocytes in lymphoid organs: distinct macrophage subpopulations in the rat recognized by monoclonal antibodies ED1, ED2 and ED3. <i>Immunology</i> . 54:589-599.

For research and in vitro use only. Not for diagnostic or therapeutic work.

Material Safety Datasheets are available at www.acris-antibodies.com or on request.

Antibody Hotline - Technical Questions - Antibody Location Service
Free Call: 0800-2274746 (Germany only) - www.acris-antibodies.com

2. Beelen, R.H.J. et al. (1987) Monoclonal antibodies ED1, ED2 and ED3 against rat macrophages: Expression of recognized antigens in different stages of differentiation. *Transplant. Proc.* 3: 3166-3170.
3. Barbe, E. et al. (1990) Characterization and expression of the antigen present on resident rat macrophages recognized by monoclonal antibody ED2. *Immunobiol.* 182: 88-99.
4. Dijkstra, C.D. and Damoiseaux, J.G.M.C. (1993) Macrophage heterogeneity established by immunocytochemistry. *Prog. Histochem. Cytochem.* 27: 1-65.
5. Whiteland, J.L., Nicholls, S.M., Shimeld, C., Easty, D.L., Williams, N.A. and Hill, T.J. (1995) Immunohistochemical Detection of T-Cell Subsets and other Leucocytes in Paraffin-embedded Rat and Mouse Tissues with Monoclonal Antibodies. *J. Histochem. Cytochem.* 43(3): 313-320.
6. Polfliet, M.M.J. et al (2002) Identification of the rat mature macrophage antigen ED2 as CD163: Regulation by glucocorticoids and role in the production of proinflammatory mediators. PhD Thesis. Vrije University, Amsterdam.

Pictures:

Staining of rat peritoneal macrophages with MOUSE ANTI RAT CD163: FITC

For research and in vitro use only. Not for diagnostic or therapeutic work.

Material Safety Datasheets are available at www.acris-antibodies.com or on request.

Antibody Hotline - Technical Questions - Antibody Location Service
Free Call: 0800-2274746 (Germany only) - www.acris-antibodies.com