

## Monoclonal Antibody to CD56 - FITC

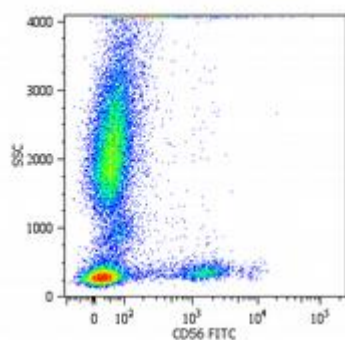
<b>Alternate names:</b>	N-CAM-1, NCAM, NCAM-1, Neural cell adhesion molecule 1
<b>Catalog No.:</b>	BM2401F
<b>Quantity:</b>	100 Tests
<b>Background:</b>	CD56 (NCAM, neural cell adhesion molecule) is a transmembrane glycoprotein of immunoglobulin family serving as adhesive molecule which is ubiquitously expressed in nervous system, usually as 120 kDa, 140 kDa or 180 kDa isoform, and it is also found on T cells and NK cells. Polysialic modification results in reduction of CD56-mediated cell adhesion and is involved in cell migration, axonal growth, pathfinding and synaptic plasticity. CD56 is a widely used neuroendocrine marker with a high sensitivity for neuroendocrine tumours and ovarian granulosa cell tumours.
<b>Uniprot ID:</b>	<a href="#">P13591</a>
<b>NCBI:</b>	<a href="#">NP_000606.3</a>
<b>GeneID:</b>	<a href="#">4684</a>
<b>Host / Isotype:</b>	Mouse / IgG2a
<b>Clone:</b>	MEM-188
<b>Immunogen:</b>	KG-1 human acute myelogenous leukaemia cell line
<b>Format:</b>	<b>State:</b> Liquid purified Ig fraction <b>Buffer System:</b> Phosphate buffered saline (PBS) containing 15 mM sodium azide and 0.2% (w/v) high-grade protease free Bovine Serum Albumin (BSA) as a stabilizing agent. <b>Label:</b> FITC – Conjugated with Fluorescein isothiocyanate under optimum conditions. The reagent is free of unconjugated and adjusted for direct use
<b>Applications:</b>	Flow cytometry: use 20 µl reagent / 100 µl of whole blood or 10e6 cells in a suspension. Other applications not tested. Optimal dilutions are dependent on conditions and should be determined by the user.
<b>Specificity:</b>	The antibody reacts with a 180 kDa isoform of CD56 (NCAM) expressed in leukocytes. It has been suggested that the antibody MEM-188 could react with rhesus monkey lymphocytes. Reactivity with other NCAM isoforms has not been tested. <b>Species:</b> Human, non-human Primates. Other species not tested.
<b>Storage:</b>	Store the antibody at 2 - 8 °C. DO NOT FREEZE! This product is photosensitive and should be protected from light. Shelf life: one year from despatch.
<b>General References:</b>	1. Lanier LL, Chang C, Azuma M, Ruitenberg JJ, Hemperly JJ, Phillips JH: Molecular and functional analysis of human natural killer cell-associated neural cell adhesion molecule (N-CAM/CD56). J Immunol. 1991 Jun 15;146(12):4421-6.

**For research and in vitro use only. Not for diagnostic or therapeutic work.**

Material Safety Datasheets are available at [www.acris-antibodies.com](http://www.acris-antibodies.com) or on request.

Antibody Hotline - Technical Questions - Antibody Location Service  
Free Call: 0800-2274746 (Germany only) - [www.acris-antibodies.com](http://www.acris-antibodies.com)

- Jakovcevski I, Mo Z, Zecevic N: Down-regulation of the axonal polysialic acid-neural cell adhesion molecule expression coincides with the onset of myelination in the human fetal forebrain. *Neuroscience*. 2007 Oct 26;149(2):328-37.
2. Ohishi Y, Kaku T, Oya M, Kobayashi H, Wake N, Tsuneyoshi M: CD56 expression in ovarian granulosa cell tumors, and its diagnostic utility and pitfalls. *Gynecol Oncol*. 2007 Oct;107(1):30-8.
3. McCluggage WG, McKenna M, McBride HA: CD56 is a sensitive and diagnostically useful immunohistochemical marker of ovarian sex cord-stromal tumors. *Int J Gynecol Pathol*. 2007 Jul;26(3):322-7.
4. Leukocyte Typing VI., Kishimoto T. et al. (Eds.), Garland Publishing Inc. (1997).  
Leukocyte Typing VII., Mason D. et al. (Eds.), Oxford University Press (2002).
5. Brdicka T, Imrich M, Angelisová P, Brdicková N, Horváth O, Spicka J, Hilgert I, Lusková P, Dráber P, Novák P, Engels N, Wienands J, Simeoni L, Osterreicher J, Aguado E, Malissen M, Schraven B, Horejsí V: Non-T cell activation linker (NTAL): a transmembrane adaptor protein involved in immunoreceptor signaling. *J Exp Med*. 2002 Dec 16;196(12):1617-26.
6. Olsen I, Tollefsen S, Aagaard C, Reitan LJ, Bannantine JP, Andersen P, Sollid LM, Lundin KE: Isolation of *Mycobacterium avium* subspecies paratuberculosis reactive CD4 T cells from intestinal biopsies of Crohn's disease patients.
7. Drbal K, Moertelmaier M, Holzhauser C, Muhammad A, Fuertbauer E, Howorka S, Hinterberger M, Stockinger H, Schütz GJ: Single-molecule microscopy reveals heterogeneous dynamics of lipid raft components upon TCR engagement. *Int Immunol*. 2007 May;19(5):675-84.
8. Brdicková N, Brdicka T, Angelisová P, Horváth O, Spicka J, Hilgert I, Paces J, Simeoni L, Kliche S, Merten C, Schraven B, Horejsí V: LIME: a new membrane Raft-associated adaptor protein involved in CD4 and CD8 coreceptor signaling. *J Exp Med*. 2003 Nov 17;198(10):1453-62.
9. Lin CW, Liu TY, Chen SU, Wang KT, Medeiros LJ, Hsu SM: CD94 1A transcripts characterize lymphoblastic lymphoma/leukemia of immature natural killer cell origin with distinct clinical features. *Blood*. 2005 Nov 15;106(10):3567-74.
10. Yates J, Rovis F, Mitchell P, Afzali B, Tsang JY, Garin M, Lechler RI, Lombardi G, Garden OA: The maintenance of human CD4+ CD25+ regulatory T cell function: IL-2, IL-4, IL-7 and IL-15 preserve optimal suppressive potency in vitro. *Int Immunol*. 2007 Jun;19(6):785-99.

**Pictures:**

Surface staining of human peripheral blood cells with anti-CD56 (MEM-188) FITC.

**For research and in vitro use only. Not for diagnostic or therapeutic work.**

Material Safety Datasheets are available at [www.acris-antibodies.com](http://www.acris-antibodies.com) or on request.

Antibody Hotline - Technical Questions - Antibody Location Service  
Free Call: 0800-2274746 (Germany only) - [www.acris-antibodies.com](http://www.acris-antibodies.com)