

Monoclonal Antibody to Cytokeratin 18 - FITC

Alternate names:	CK18, CYK18, Cell proliferation-inducing gene 46 protein, Cytokeratin-18, K18, KRT18, Keratin 18, Keratin type I cytoskeletal 18, Keratin-18
Catalog No.:	BM2275F
Quantity:	0.25 ml
Background:	Cytokeratin 18 is an acidic keratin which is found primarily in non squamous epithelia and is present in a majority of adenocarcinomas and ductal carcinomas but not in squamous cell carcinomas. Cytokeratin 18 exists in combination with Cytokeratin 8, a basic keratin. Hepatocellular carcinomas have been reportedly defined by the use of antibodies that recognize only Cytokeratins 8 and 18.
Uniprot ID:	P05783
NCBI:	NP_000215.1
GeneID:	3875
Host / Isotype:	Mouse / IgG1
Clone:	Ks18.04
Immunogen:	Human keratin K18 from a HeLa cytoskeletal preparation
Format:	State: Liquid purified Ig fraction containing 0.09% Sodium Azide Purification: Protein A Chromatography Label: FITC – Fluorescein
Applications:	Immunofluorescence. Cytological material. Flow Cytometry: 1/5-1/10. Immunohistochemistry of Frozen Sections. Immunohistochemistry of Paraffin Sections: 1/10. <i>Working dilution:</i> 1/10 for immunohistochemistry. <i>Incubation Time:</i> 1 h at 37°C. Other applications not tested. Optimal dilutions are dependent on conditions and should be determined by the user.
Specificity:	Ks 18.04 represents an excellent marker to discriminate simple epithelia from those of different origin. Tumors Specifically Detected: all adenocarcinoma; mammary carcinoma, urinary bladder carcinoma, undifferentiated carcinoma, cervix carcinoma, hepatocellular carcinoma. Polypeptide reacting: Mr 45 000 polypeptide (human keratin K18) of all simple type epithelia and basal cells of many squamous, nonepidermal epithelia. Reacts with HeLa and MCF-7 (cell lines tested so far). Species: Human, Mouse, Rat, Bovine, Pig, Dog, Hamster, Sheep, and Fish (trout). Other species not tested.

For research and in vitro use only. Not for diagnostic or therapeutic work.

Material Safety Datasheets are available at www.acris-antibodies.com or on request.

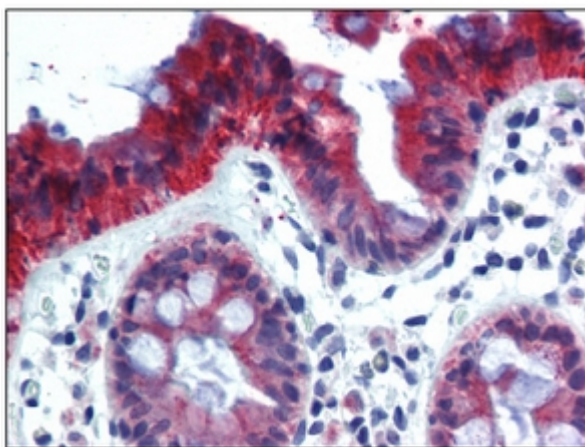
Antibody Hotline - Technical Questions - Antibody Location Service
Free Call: 0800-2274746 (Germany only) - www.acris-antibodies.com

Storage: Store the antibody undiluted at 2-8°C for one month or (in aliquots) at -20°C for longer. Avoid repeated freezing and thawing.
Shelf life: one year from despatch.

Product Citation: Unconjugated antibody is cited in:
1. Constanze Hantel, Felicitas Lewrick, Sebastian Schneider, Oliver Zwermann, Aurel Perren, Martin Reincke, Regine Süß, and Felix Beuschlein Anti Insulin-Like Growth Factor I Receptor Immunoliposomes: A Single Formulation Combining Two Anticancer Treatments with Enhanced Therapeutic Efficiency. *J. Clin. Endocrinol. Metab.*, Feb 2010; 95: 943-952.

General References: 1. Bartek J, Vojtesek B, Staskova Z, Bartkova J, Kerekes Z, Rejthar A, Kovarik J: A series of 14 new monoclonal antibodies to keratins: Characterization and value in diagnostic histopathology. *J. Pathol.* (1991), 164, 215-224
2. Lanerova L, Kovarik J, Bartek J, Rejthar A, Vojtesek B: Novel monoclonal antibodies defining epitope of human cytokeratin 18 molecule. *Hybridoma* 7, 495-504 (1988)
3. Markl J, Winter S, Franke WW: The catalog and the expression complexity of cytokeratins in a lower vertebrate: Biochemical identification of cytokeratins in a teleost fish, the rainbow trout. *Eur. J. Cell Biol.* 50, 1-16 (1989)
4. Moll R, Franke WW, Schiller DL, Geiger B, Krepler R: The catalog of human cytokeratins: Patterns of expression in normal epithelia, tumors and cultured cells. *Cell* 31, 11-24 (1982)
5. Gomi H, Yokoyama T, Fujimoto K, Ikeda T, Katoh A, Itoh T, Itohara S: Mice Devoid of the Glial Fibrillary Acidic Protein Develop Normally and Are Susceptible to Scrapie Prions. *Neuron*, Vol. 14, 29-41 (1995)
6. Bantel H, Ruck P, Gregor M, Schulze-Osthoff K: Detection of elevated caspase activation and early apoptosis in liver diseases. *Eur.J.Cell Biol.* 80, 230-239 (2001)
7. Stumptner C, Fuchsbichler A, Heid H, Zatloukal K, Denk H: Mallory body - a disease-associated type of sequestosome. *Hepatology* 35, 1053-1062 (2002)

Pictures:

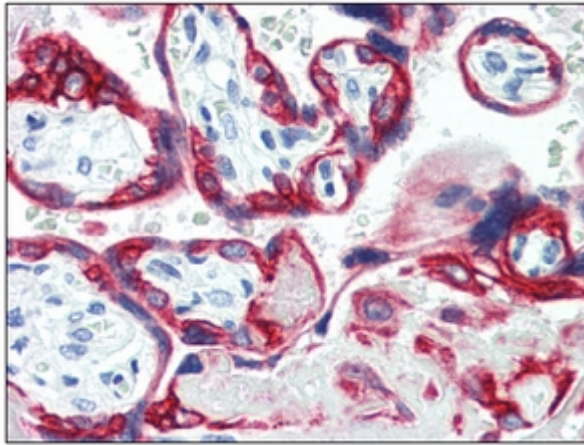


BM2275F KRT18 antibody staining of Formalin-Fixed, Paraffin-Embedded Human Colon followed by biotinylated anti-mouse IgG secondary antibody, alkaline phosphatase-streptavidin and chromogen.

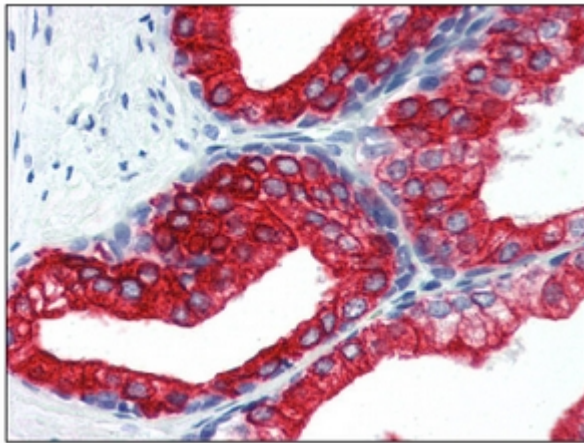
For research and in vitro use only. Not for diagnostic or therapeutic work.

Material Safety Datasheets are available at www.acris-antibodies.com or on request.

Antibody Hotline - Technical Questions - Antibody Location Service
Free Call: 0800-2274746 (Germany only) - www.acris-antibodies.com



BM2275F KRT18 antibody staining of Formalin-Fixed, Paraffin-Embedded Human Placenta followed by biotinylated anti-mouse IgG secondary antibody, alkaline phosphatase-streptavidin and chromogen.



BM2275F KRT18 antibody staining of Formalin-Fixed, Paraffin-Embedded Human Prostate followed by biotinylated anti-mouse IgG secondary antibody, alkaline phosphatase-streptavidin and chromogen.

For research and in vitro use only. Not for diagnostic or therapeutic work.

Material Safety Datasheets are available at www.acris-antibodies.com or on request.

Antibody Hotline - Technical Questions - Antibody Location Service
Free Call: 0800-2274746 (Germany only) - www.acris-antibodies.com