

Polyclonal Antibody to S100A4 (C-term) - Aff - Purified

Alternate names:	CAPL, Calvasculin, FSP-1, FSP1, Fibroblast specific protein-1, Fibroblast marker, MTS1, Metastasin, Placental Calcium-Binding Protein, S100 Calcium-Binding Protein A4, S100-A4
Catalog No.:	AP16925PU-N
Quantity:	0.1 mg
Concentration:	0.5 mg/ml
Background:	S100 belongs to the family of calcium binding proteins such as calmodulin and troponin C. S100A is composed of an alpha and beta chain whereas S100B is composed of two beta chains. S100 protein is also expressed in the antigen presenting cells such as the Langerhans cells in skin and interdigitating reticulum cells in the paracortex of lymph nodes. S100A4 has been implicated in motility, invasion and tubulin polymerization. It is also involved in tumor metastasis.
Uniprot ID:	P26447
NCBI:	9606
GeneID:	6275
Host:	Goat
Immunogen:	Synthetic Peptide from the C-Terminus of Human S100A4 (NP_002952.1 and NP_062427.1) Gene name: S100A4 AA Sequence: CNEFFEGFPDKQP Remarks: Both variants (NP_002952.1; NP_062427.1) represent identical protein.
Format:	State: Liquid purified Ig fraction Purification: Ammonium Sulphate Precipitation followed by Antigen Affinity Chromatography using the immunizing peptide Buffer System: Tris saline, pH~7.3 Preservatives: 0.02% Sodium Azide Stabilizers: 0.5% BSA
Applications:	Peptide ELISA: 1/128000 (Detection Limit). Western blot: 0.03-0.1 µg/ml. Approx 13kDa band observed in Human Placenta lysates. Immunohistochemistry on Paraffin Sections: 2-3 µg/ml. In paraffin embedded Human Small Intestine shows strong nuclear staining in some cells and weaker cytoplasm staining in some other cells. Other applications not tested. Optimal dilutions are dependent on conditions and should be determined by the user.
Specificity:	This antibody recognizes S100A4 / CAPL.
Species Reactivity:	Tested: Human. Expected from sequence similarity: Mouse, Rat, Canine (Dog).

For research and in vitro use only. Not for diagnostic or therapeutic work.

Material Safety Datasheets are available at www.acris-antibodies.com or on request.

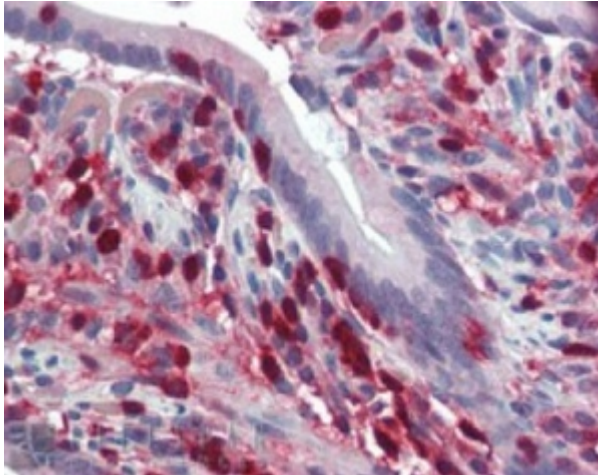
Antibody Hotline - Technical Questions - Antibody Location Service
Free Call: 0800-2274746 (Germany only) - www.acris-antibodies.com

Add. Information: **Calculated Molecular Weight:** 11.7kDa (NP_002952.1 and NP_062427.1).

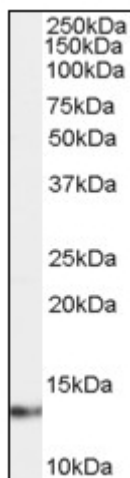
Storage: Store the antibody undiluted at 2-8°C for one month or (in aliquots) at -20°C for longer.
Avoid repeated freezing and thawing.
Shelf life: one year from despatch.

General References: 1. Li ZH, Bresnick AR. The S100A4 metastasis factor regulates cellular motility via a direct interaction with myosin-IIA. *Cancer Res.* 2006 May 15;66(10):5173-80.
PMID: 16707441

Pictures:



AP16925PU-N S100A4 Antibody staining of Paraffin Embedded Human Small Intestine at 2.5 µg/ml. Steamed antigen retrieval with citrate buffer pH 6, AP-staining.



Western Blot analysis: AP16925PU-N S100A4 antibody staining of Human Placenta lysate at 0.03 µg/ml (35µg protein in RIPA buffer). Primary incubation was 1 hour. Detected by chemiluminescence.

For research and in vitro use only. Not for diagnostic or therapeutic work.

Material Safety Datasheets are available at www.acris-antibodies.com or on request.

Antibody Hotline - Technical Questions - Antibody Location Service
Free Call: 0800-2274746 (Germany only) - www.acris-antibodies.com