

## Polyclonal Antibody to Claudin-7 / CLDN7 - Purified

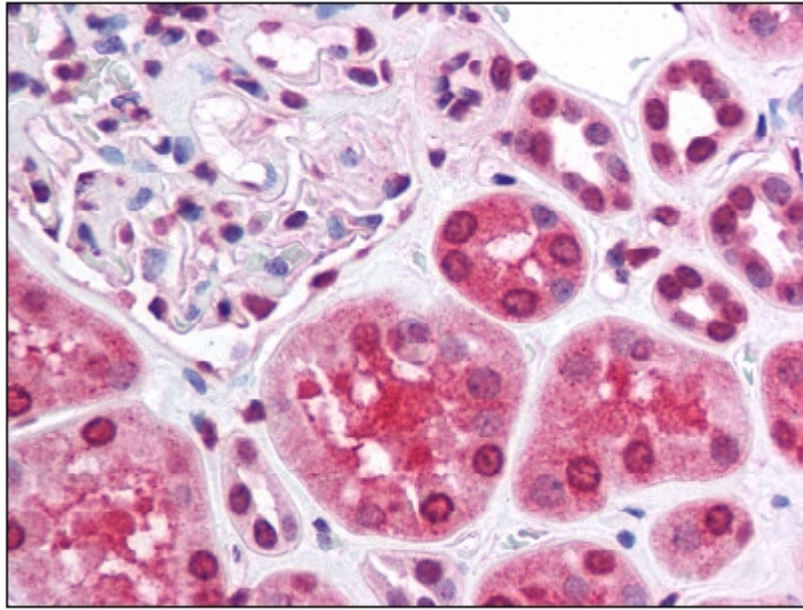
<b>Alternate names:</b>	CEPTRL2, CLDN-7, CPETRL2
<b>Catalog No.:</b>	AP07903PU-N
<b>Quantity:</b>	50 µg
<b>Background:</b>	Claudins, such as CLDN7, are involved in the formation of tight junctions between epithelial cells. Tight junctions restrict lateral diffusion of lipids and membrane proteins, and thereby physically define the border between the apical and basolateral compartments of epithelial cells.
<b>Uniprot ID:</b>	<a href="#">O95471</a>
<b>NCBI:</b>	<a href="#">NP_001171951.1</a>
<b>GeneID:</b>	<a href="#">1366</a>
<b>Host:</b>	Rabbit
<b>Immunogen:</b>	Synthetic Peptide - KLH conjugated corresponding to Amino acids 107-120 of human CLDN7.
<b>Format:</b>	<b>State:</b> Liquid purified IgG fraction. <b>Purification:</b> Protein G Chromatography. <b>Buffer System:</b> Phosphate Buffered Saline PBS containing 0.09% Sodium Azide as preservative.
<b>Applications:</b>	Immunohistochemistry on Paraffin Sections (10 µg/ml). ELISA (1/0-1/1000). Other applications not tested. Optimal dilutions are dependent on conditions and should be determined by the user.
<b>Specificity:</b>	This antibody recognises Claudin 7 (CLDN7). <b>Species:</b> Human. Other species not tested.
<b>Storage:</b>	Store the antibody undiluted at 2-8°C for one month or (in aliquots) at -20°C for longer. Dilute only prior to immediate use. Avoid cycles of freezing and thawing. Shelf life: One year from despatch.

**For research and in vitro use only. Not for diagnostic or therapeutic work.**

Material Safety Datasheets are available at [www.acris-antibodies.com](http://www.acris-antibodies.com) or on request.

Antibody Hotline - Technical Questions - Antibody Location Service  
Free Call: 0800-2274746 (Germany only) - [www.acris-antibodies.com](http://www.acris-antibodies.com)

## Pictures:



**Figure 1.** Staining CLDN7 in Kidney by Immunohistochemistry using Formalin-Fixed Paraffin-Embedded (FFPE) tissue.