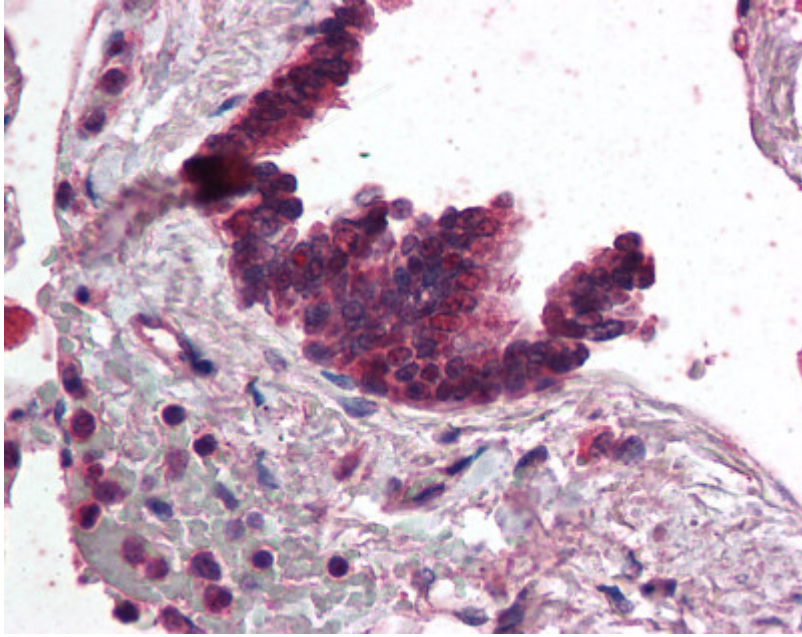


Polyclonal Antibody to AP3 complex subunit delta-1 (686-698) - Aff - Purified

Alternate names:	AP3D1, Adapter-related protein complex 3 subunit delta-1, PRO0039, delta Adaptin
Catalog No.:	AP07559PU-N
Quantity:	50 µg
Concentration:	1.0 mg/ml
Background:	AP3D1 (also known as Delta-adaptin 3, AP-3 complex delta subunit and Delta-adaptin) is a subunit of the AP3 adaptor-like complex, which is not associated with clathrin. The AP3D1 subunit is implicated in intracellular biogenesis and trafficking of pigment granules and possibly platelet dense granules and neurotransmitter vesicles.
Uniprot ID:	O14617
NCBI:	NP_001070991.1
GeneID:	8943
Host:	Goat
Immunogen:	Synthetic peptide -KLH conjugated corresponding to aa 686-698 of Human AP3D1.
Format:	State: Liquid purified Ig fraction Purification: Immunoaffinity Chromatography Buffer System: 0.02M Potassium Phosphate, 0.15M Sodium Chloride, pH 7.2 with 0.01% (w/v) Sodium Azide
Applications:	ELISA: 1/5000-1/20000. Western Blot: 1/500-1/2000. Immunofluorescence. Immunohistochemistry on Paraffin Sections: 2.5 µg/ml. Heat induced antigen retrieval in pH 6.0 Citrate buffer is recommended. Other applications not tested. Optimal dilutions are dependent on conditions and should be determined by the user.
Specificity:	This antibody reacts with aa 686-698 of AP3D1.
Species Reactivity:	Tested: Human Expected from sequence similarity: Mouse, Rat, Canine
Storage:	Store the antibody undiluted at 2-8°C for one month or (in aliquots) at -20°C for longer. Avoid repeated freezing and thawing. Shelf life: one year from despatch.

Pictures:



AP07559PU-N AP3D1 antibody staining of Formalin-Fixed Paraffin-Embedded Human Lung, Respiratory Epithelium at 2.5 µg/ml