

Polyclonal Antibody to AP1 complex subunit gamma-1 - Aff - Purified

Alternate names:	ADTG, AP1G1, Adapter-related protein complex 1 subunit gamma-1, Adaptor protein complex AP-1 subunit gamma-1, CLAPG1, Clathrin assembly protein complex 1 gamma-1 large chain, Golgi adaptor HA1/AP1, gamma 1 Adaptin, gamma Adaptin
Catalog No.:	AP07558PU-N
Quantity:	50 µg
Concentration:	0.7 mg/ml
Background:	AP1G1 (also known as gamma 1 subunit of adaptor -related protein complex 1, Gamma-adaptin, Adaptor protein complex AP-1 gamma-1 subunit, Golgi adaptor HA1/AP1 adaptin gamma-1 subunit and Clathrin assembly protein complex 1 gamma-1 large chain) is a subunit of clathrin-associated adaptor protein complex 1 that plays a role in protein sorting in the late-Golgi/trans-Golgi network (TGN) and/or endosomes. The AP complexes mediate both the recruitment of clathrin to membranes and the recognition of sorting signals within the cytosolic tails of transmembrane cargo molecules. The adaptin family of proteins is composed of four classes of molecules named alpha, beta-, beta prime- and gamma- adaptins. Adaptins, together with medium and small subunits, form a heterotetrameric complex called an adaptor, whose role is to promote the formation of clathrin-coated pits and vesicles. AP1G1 is localized to the coat surrounding the cytoplasmic face of coated vesicles located at the Golgi complex and is widely expressed.
Uniprot ID:	O43747
NCBI:	NP_001025178.1
GeneID:	164
Host:	Goat
Immunogen:	Synthetic peptide - KLH conjugated
Format:	State: Liquid purified Ig fraction Purification: Immunoaffinity Chromatography Buffer System: 0.02M Potassium Phosphate, 0.15M Sodium Chloride, pH 7.2 with 0.01% (w/v) Sodium Azide as preservative
Applications:	ELISA: 1/2000-1/8000. Western Blot: 1/500-1/2000. Immunofluorescence. Immunohistochemistry on Paraffin Sections: 2.5 µg/ml. Heat induced antigen retrieval in pH 6.0 citrate buffer is recommended. Other applications not tested. Optimal dilutions are dependent on conditions and should be determined by the user.
Specificity:	This antibody recognizes the aa 646-659 of Human AP1G1.

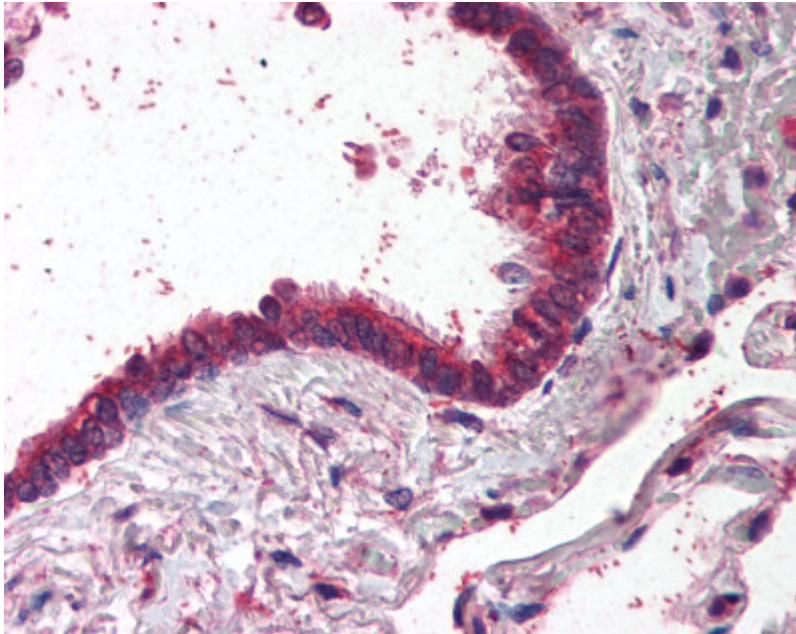
For research and in vitro use only. Not for diagnostic or therapeutic work.
Material Safety Datasheets are available at www.acris-antibodies.com or on request.

Antibody Hotline - Technical Questions - Antibody Location Service
Free Call: 0800-2274746 (Germany only) - www.acris-antibodies.com

Species Reactivity: Tested: Human.
Expected from sequence similarity: Mouse, Rat, Chicken, Canine (Dog).

Storage: Store the antibody undiluted at 2-8°C for one month or (in aliquots) at -20°C for longer.
Avoid repeated freezing and thawing.
Shelf life: one year from despatch.

Pictures:



AP07558PU-N AP1G1 antibody staining of Formalin-Fixed Paraffin-Embedded Human Lung, Respiratory Epithelium at 2.5 µg/ml followed by biotinylated anti-Goat IgG secondary antibody, alkaline phosphatase-streptavidin and chromogen.