

## Polyclonal Antibody to Claudin-7 / CLDN7 - Aff - Purified

**Alternate names:** CEPTRL2, CLDN-7, CPETRL2

**Catalog No.:** AP06067PU-N

**Quantity:** 0.1 mg

**Concentration:** 1.0 mg/ml

**Background:** The Claudin superfamily consists of many structurally related proteins in humans. These proteins are important structural and functional components of tight junctions in paracellular transport. Claudins are located in both epithelial and endothelial cells in all tight junction-bearing tissues. Three classes of proteins are known to localize to tight junctions, including the Claudins, Occludin and junction adhesion molecule (JAM). Claudins, which consist of four transmembrane domains and two extracellular loops, make up tight junction strands. Claudin expression is highly restricted to specific regions of different tissues and may have an important role in transcellular transport through tight junctions. mRNA studies indicate that claudin-7 is specifically expressed in mouse lung and kidney, but not in heart, brain, spleen, liver, skeletal muscle or testis. The gene encoding human claudin-7 maps to chromosome 17p13.

**Uniprot ID:** [O95471](#)

**NCBI:** [NP\\_001171951.1](#)

**GeneID:** [1366](#)

**Host:** Rabbit

**Format:** **State:** Liquid purified Ig fraction  
**Purification:** Affinity chromatography (> 95% (by SDS-PAGE))  
**Buffer System:** PBS, pH 7.2. containing 0,05% sodium azide as preservative

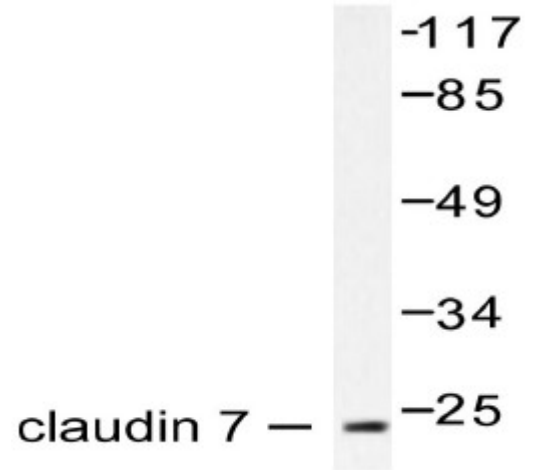
**Applications:** ELISA: 1/20000 - 1/40000.  
Western Blot: 1/500 - 1/1000.  
Immunohistochemistry on paraffin sections: 1/50 - 1/200.  
Other applications not tested. Optimal dilutions are dependent on conditions and should be determined by the user.

**Specificity:** Claudin 7 antibody detects endogenous levels of Claudin 7 protein.  
**Species:** Human, Mouse, Rat.  
Other species not tested.

**Storage:** Store the antibody undiluted at 2-8°C for one month or (in aliquots) at -20°C for longer.  
Avoid repeated freezing and thawing.  
Shelf life: one year from despatch.

**Pictures:**

Western blot (WB) analysis of Claudin 7 pAb in extracts from 293 K562 cells.



Immunohistochemistry (IHC) analyzes of Claudin7 pAb in paraffin-embedded human lung carcinoma tissue.

