

Polyclonal Antibody to Claudin-3 / CLDN3 - Aff - Purified

Alternate names:	C7orf1, CPE-R2, CPE-Receptor 2, CPETR2, Clostridium perfringens enterotoxin receptor 2, RVP1
Catalog No.:	AP06064PU-N
Quantity:	0.1 mg
Concentration:	1.0 mg/ml
Background:	<p>The Claudin superfamily consists of many structurally related proteins in humans. These proteins are important structural and functional components of tight junctions in paracellular transport. Claudins are located in both epithelial and endothelial cells in all tight junction-bearing tissues. Three classes of proteins are known to localize to tight junctions, including the Claudins, Occludin and junction adhesion molecule (JAM). Claudins, which consist of four transmembrane domains and two extracellular loops, make up tight junction strands. Claudin expression is highly restricted to specific regions of different tissues and variations of Claudin expression may have an important role in transcellular transport through tight junctions. In rat liver, claudin-3 is uniformly expressed, whereas in the pancreas, claudin-3 is expressed in junctions of the duct epithelia and junctions of acinar cells. Claudin-3 binds the peptide toxin Clostridium perfringens enterotoxin (CPE) at the cell surface via the second extracellular loop of claudin-3. The gene encoding human claudin-3 maps to chromosome 7q11.23.</p>
Uniprot ID:	O15551
NCBI:	NP_001297.1
GeneID:	1365
Host:	Rabbit
Format:	State: Liquid purified Ig fraction (>95% pure by SDS-PAGE). Purification: Affinity-Chromatography using epitope-specific immunogen. Buffer System: Phosphate buffered saline (PBS), pH~7.2 with 0.05% Sodium Azide as preservative.
Applications:	ELISA: 1/40000-1/60000. Western blot: 1/500-1/1000. Immunofluorescence: 1/50-1/200. Immunohistochemistry on Paraffin Sections: 1/50-1/200. Other applications not tested. Optimal dilutions are dependent on conditions and should be determined by the user.
Specificity:	This antibody detects endogenous levels of Claudin-3 protein. Species: Human, Mouse and Rat. Other species not tested.
Add. Information:	Molecular Weight: ~25 kDa

For research and in vitro use only. Not for diagnostic or therapeutic work.

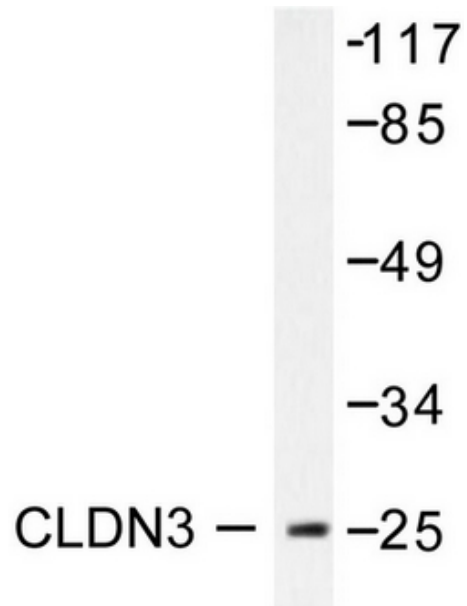
Material Safety Datasheets are available at www.acris-antibodies.com or on request.

Antibody Hotline - Technical Questions - Antibody Location Service
Free Call: 0800-2274746 (Germany only) - www.acris-antibodies.com



Storage: Store the antibody undiluted at 2-8°C for one month or (in aliquots) at -20°C for longer. Avoid repeated freezing and thawing. Shelf life: one year from despatch.

Pictures: Western blot analysis of Claudin 3 antibody in extracts from HuvEc .



Immunohistochemistry (IHC) analyzes of Claudin 3 antibody in paraffin-embedded human colon carcinoma tissue.

