

## Monoclonal Antibody to CD162 / PSGL1 - FITC

<b>Alternate names:</b>	P-selectin glycoprotein ligand 1, PSGL-1, SELPLG, Selectin P ligand
<b>Catalog No.:</b>	AM12002FC-N
<b>Quantity:</b>	100 Tests
<b>Background:</b>	CD162 (P-selectin glycoprotein ligand-1, PSGL-1) is a sialomucin constitutively expressed as a disulfide-linked homodimer of two 120 kDa subunits on the surface of circulating leukocytes. CD162 serves as a ligand for P- E- and L-selectin, with the highest affinity for P-selectin. It is thus involved in leukocyte rolling at the endothelial surfaces, prerequisite for firm leukocyte adhesion and subsequent transendothelial migration. CD162 also mediates leukocyte-platelet adhesion and interleukocyte contacts. Whereas serving as an adhesion molecule on mature leukocytes, CD162 is a potent negative regulator of human hematopoietic progenitors.
<b>Uniprot ID:</b>	<a href="#">Q14242</a>
<b>NCBI:</b>	<a href="#">NP_002997</a>
<b>GeneID:</b>	<a href="#">6404</a>
<b>Host / Isotype:</b>	Mouse / IgG1
<b>Recommended Isotype Controls:</b>	SM10F (for use in human samples)
<b>Clone:</b>	TC2
<b>Format:</b>	<b>State:</b> Liquid purified Ig fraction <b>Buffer System:</b> Phosphate buffered saline (PBS) containing 15 mM Sodium Azide and 0.2% (w/v) high-grade protease free BSA as a stabilizing agent <b>Label:</b> FITC – Fluorescein isothiocyanate ; free of unconjugated
<b>Applications:</b>	Flow Cytometry analysis of Human blood cells using 20 µl reagent / 100 ml of whole blood or 10e6 cells in a suspension. The content of a vial (2 ml) is sufficient for 100 tests. Other applications not tested. Optimal dilutions are dependent on conditions and should be determined by the user.
<b>Specificity:</b>	The antibody TC2 reacts with CD162, a 220 kDa type I integral membrane protein expressed as disulfide-linked homodimer (sialomucin family). CD162 is present on the most peripheral blood T lymphocytes, monocytes, granulocytes; it is also expressed on a subpopulation of B lymphocytes and CD34+ bone marrow cells.
<b>Species Reactivity:</b>	<b>Tested:</b> Human.

**Storage:**

Store the antibody at 2-8 °C.

**DO NOT FREEZE!**

This product is photosensitive and should be protected from light.

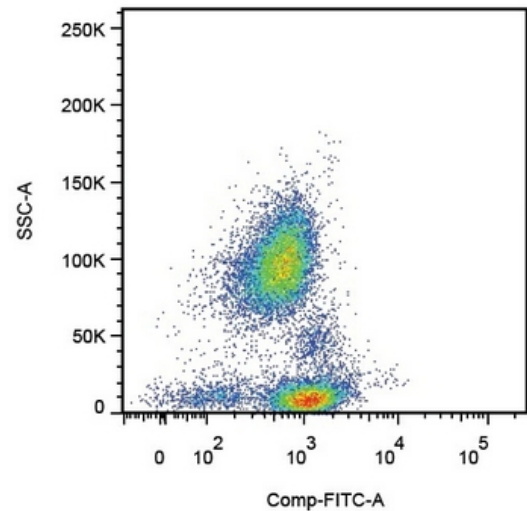
Shelf life: one year from despatch.

**General Readings:**

1. Moore KL: Structure and function of P-selectin glycoprotein ligand-1. *Leuk Lymphoma*. 1998 Mar;29(1-2):1-15.
2. Lévesque JP, Zannettino AC, Pudney M, Niutta S, Haylock DN, Snapp KR, et al. PSGL-1-mediated adhesion of human hematopoietic progenitors to P-selectin results in suppression of hematopoiesis. *Immunity*. 1999 Sep;11(3):369-78. PubMed PMID: 10514015.
3. Davenpeck KL, Brummet ME, Hudson SA, Mayer RJ, Bochner BS. Activation of human leukocytes reduces surface P-selectin glycoprotein ligand-1 (PSGL-1, CD162) and adhesion to P-selectin in vitro. *J Immunol*. 2000 Sep 1;165(5):2764-72. PubMed PMID: 10946308.
4. *Leukocyte Typing VII.*, Mason D. et al. (Eds.), Oxford University Press (2002).
5. Marsik C, Mayr F, Cardona F, Schaller G, Wagner OF, Jilma B. Endotoxin down-modulates P-selectin glycoprotein ligand-1 (PSGL-1, CD162) on neutrophils in humans. *J Clin Immunol*. 2004 Jan;24(1):62-5. PubMed PMID: 14997035.

**Pictures:**

Surface staining of human peripheral blood cells with anti-Human CD162 antibody (clone TC2).



**For research and in vitro use only. Not for diagnostic or therapeutic work.**

Material Safety Datasheets are available at [www.acris-antibodies.com](http://www.acris-antibodies.com) or on request.

Antibody Hotline - Technical Questions - Antibody Location Service  
Free Call: 0800-2274746 (Germany only) - [www.acris-antibodies.com](http://www.acris-antibodies.com)