

Monoclonal Antibody to CD3 - PE

Alternate names:	T-cell surface antigen T3/Leu-4, T-cell surface glycoprotein CD3, T3/Leu-4
Catalog No.:	AM08114RP-N
Quantity:	0.1 mg
Concentration:	0.1 mg/ml
Background:	<p>T cell activation through the antigen receptor (TCR) involves the cytoplasmic tails of the CD3 subunits: CD3 gamma, CD3 delta, CD3 epsilon and CD3 zeta. These CD3 subunits are structurally related members of the immunoglobulins super family encoded by closely linked genes on human chromosome 11. The CD3 components have long cytoplasmic tails that associate with cytoplasmic signal transduction molecules. This association is mediated at least in part by a double tyrosine based motif present in a single copy in the CD3 subunits. CD3 may play a role in TCR induced growth arrest, cell survival and proliferation. The CD3 antigen is present on 68-82% of normal peripheral blood lymphocytes, 65-85% of thymocytes and Purkinje cells in the cerebellum. It is never expressed on B or NK cells. Decreased percentages of T lymphocytes may be observed in some autoimmune diseases.</p>
Uniprot ID:	Q98910
NCBI:	9031
Host / Isotype:	Mouse / IgG1
Clone:	CT-3
Format:	State: Liquid purified Ig fraction Buffer System: PBS containing 0.09% Sodium Azide as preservative and a stabilizing agent Label: PE – R-Phycoerythrin
Applications:	Flow Cytometry: $\leq 0.5 \mu\text{g}/10^6$ cells. (Ref.1) Other applications not tested. Optimal dilutions are dependent on conditions and should be determined by the user.
Specificity:	Specific to Chicken CD3. This antibody recognizes a complex of at least three polypeptides of Mr 20-, 19-, and 17-kDa (two of which are N-glycosylated) on Chicken T cells. It also coprecipitates a polypeptide of 90-kDa from digitonin solubilized T cell lysates, which can be reduced to two polypeptides of Mr 50- and 40-kDa. (Ref.1) Species: Chicken. Other species not tested.

For research and in vitro use only. Not for diagnostic or therapeutic work.

Material Safety Datasheets are available at www.acris-antibodies.com or on request.

Antibody Hotline - Technical Questions - Antibody Location Service
Free Call: 0800-2274746 (Germany only) - www.acris-antibodies.com

Storage:

Store the antibody undiluted at 2-8°C.

DO NOT FREEZE!

This product is photosensitive and should be protected from light.

Avoid repeated freezing and thawing.

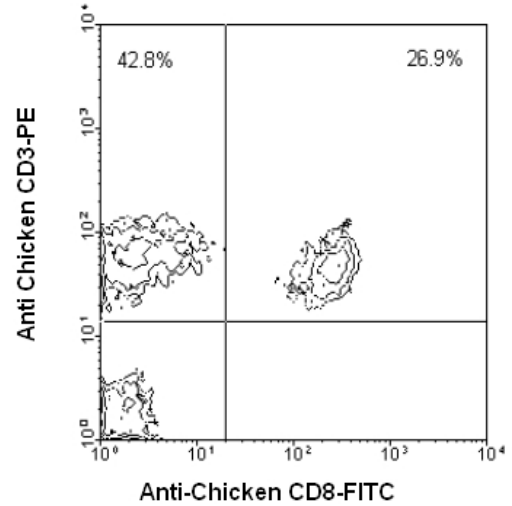
Shelf life: one year from despatch.

General Readings:

1. Chen, C.-L., L. Ager, G.L. Gartland, and M.D. Cooper. 1986. J. Exp. Med. 164:375-380.

Pictures:

Immunofluorescent Staining: Chicken peripheral blood mononuclear cells were double stained with Mouse anti-Chicken CD3-PE and Mouse anti-Chicken CD8a-FITC (AM08116FC-N). Small lymphocytes were then gated and analyzed on a FACScan(TM) flow cytometer (BDIS, San Jose, CA). Amount Used: 0.2 µg/10e6 cells.



For research and in vitro use only. Not for diagnostic or therapeutic work.

Material Safety Datasheets are available at www.acris-antibodies.com or on request.

Antibody Hotline - Technical Questions - Antibody Location Service
Free Call: 0800-2274746 (Germany only) - www.acris-antibodies.com

