

## Monoclonal Antibody to Mouse Kappa Light Chain - PE

**Catalog No.:** AM08020RP-S

**Quantity:** 0.1 mg

**Host / Isotype:** Rat / IgG1

**Clone:** H139-52.1

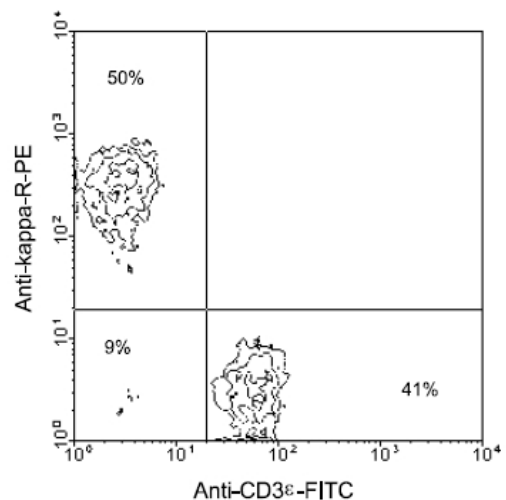
**Format:** **State:** Liquid purified Ig fraction.  
**Buffer System:** PBS containing 0.09% Sodium Azide as preservative and a stabilizing agent.  
**Label:** PE – R-Phycoerythrin

**Applications:** **Flow Cytometry:** < / = 0.2 µg/10e6 cells.  
 Identification and enumeration of kappa+ cells.  
**Immunofluorescence Microscopy:** Identification and enumeration of kappa+ cells.  
**FLISA:**  
 Other applications not tested. Optimal dilutions are dependent on conditions and should be determined by the user.

**Specificity:** This antibody reacts with Mouse kappa light chains.  
**Species:** Mouse.  
 Other species not tested.

**Storage:** Store the antibody undiluted at 2-8°C.  
**DO NOT FREEZE!**  
 This product is photosensitive and should be protected from light.  
 Avoid repeated freezing and thawing.  
 Shelf life: one year from despatch.

**Pictures:** **Immunofluorescent Staining:** Cells from BALB/c spleen were double-stained with Rat anti-Mouse kappa-R-PE and Rat anti-Mouse CD3ε-FITC (Clone C363.29B), following which small lymphocytes were gated and analyzed using a FACScan(TM) flow cytometer (BDIS, San Jose, CA).  
 Amount Used: 0.1 µg/10e6 cells.



**For research and in vitro use only. Not for diagnostic or therapeutic work.**  
 Material Safety Datasheets are available at [www.acris-antibodies.com](http://www.acris-antibodies.com) or on request.

Antibody Hotline - Technical Questions - Antibody Location Service  
 Free Call: 0800-2274746 (Germany only) - [www.acris-antibodies.com](http://www.acris-antibodies.com)