

## Monoclonal Antibody to Mouse Kappa Light Chain - FITC

**Catalog No.:** AM08019FC-N

**Quantity:** 0.5 mg

**Concentration:** 0.5 mg/ml

**Host / Isotype:** Rat / IgG1

**Clone:** 187.1

**Format:** **State:** Liquid purified Ig fraction.  
**Buffer System:** PBS containing 0.09% Sodium Azide as preservative.  
**Label:** FITC – Fluorescein Isothiocyanate Isomer 1

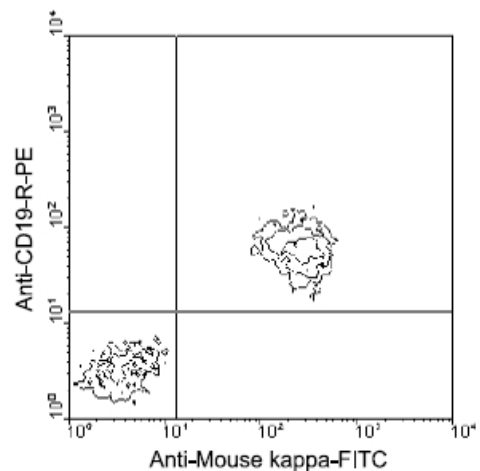
**Applications:** **Flow Cytometry:** < / = 1 µg/10e6 cells.  
Identification and enumeration of kappa cells.  
**Immunofluorescence Microscopy:** Identification and enumeration of kappa cells.  
**ELISA.**

Other applications not tested. Optimal dilutions are dependent on conditions and should be determined by the user.

**Specificity:** This antibody reacts with Mouse kappa light chains.  
Does not react with other immunoglobulin isotypes or lambda light chains.  
**Species:** Mouse.  
Other species not tested.

**Storage:** Store the antibody undiluted at 2-8°C for one month or (in aliquots) at -20°C for longer.  
This product is photosensitive and should be protected from light.  
Avoid repeated freezing and thawing.  
Shelf life: one year from despatch.

**Pictures:** **Immunofluorescent Staining:** BALB/c splenocytes were double-stained with rat anti-Mouse Kappa-FITC and rat anti-mouse CD19-R-PE (Clone 6D5). Small lymphocytes were then gated and analyzed using a FACScan(TM) flow cytometer (BDIS, San Jose, CA). Amount Used: 1 µg/10e6 cells.



**For research and in vitro use only. Not for diagnostic or therapeutic work.**  
Material Safety Datasheets are available at [www.acris-antibodies.com](http://www.acris-antibodies.com) or on request.

Antibody Hotline - Technical Questions - Antibody Location Service  
Free Call: 0800-2274746 (Germany only) - [www.acris-antibodies.com](http://www.acris-antibodies.com)