

Catalogue No. AB0059-200

Qty: 400 µg (2 mg/ml)

Clathrin HC Polyclonal Antibody

Source: Goat

General description: Goat polyclonal to Clathrin Heavy Chain. Clathrin is formed by three clathrin heavy chains and three light chains. This protein is a major protein component of the cytoplasmic face of intracellular organelles, called coated vesicles and coated pits. These specialized organelles are involved in endocytosis of a variety of macromolecules and in the intracellular trafficking of receptors.

Alternative names: clathrin, clathrin heavy chain 1, clathrin heavy polypeptide (Hc), clathrin heavy polypeptide-like 2, CLTC, CHC17, CLH-17, CLTCL2, Hc, heavy chain (Hc) antibody.

Form: Polyclonal antibody supplied as a 200 µl (2 mg/ml) aliquot in PBS, 20% glycerol and 0.05% sodium azide. This antibody is epitope-affinity purified from goat antiserum.

Immunogen: Purified recombinant peptide derived from within residues 50 aa to N-terminus of human CLTC produced in *E. coli*.

Specificity: Detects endogenous levels of total CLTC by Western blot in the whole cell lysates (MDCK, At-T20, COS-7).

Reactivity: Reacts against human, rat, mouse, canine and monkey proteins.

Sample	Western blot	Immuno-fluorescence	Histochemistry (paraffin)	Histochemistry (frozen)
human	+++	+++	ND	ND
rat	+++	+++	ND	ND
mouse	+++	+++	ND	ND
canine	+++	+++	ND	ND
monkey	+++	+++	ND	ND

+++ excellent, ++ good, + poor, ND not determined

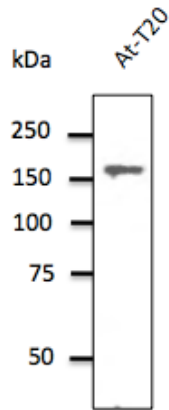
Usage: Western blot 1:250-1:1,000
 Immunofluorescence 1:25-1:250
 Immunohistochemistry (paraffin) ND
 Immunohistochemistry (frozen) ND

Storage: Store at -20 C for long-term storage. Store at 2-8 C for up to one month.

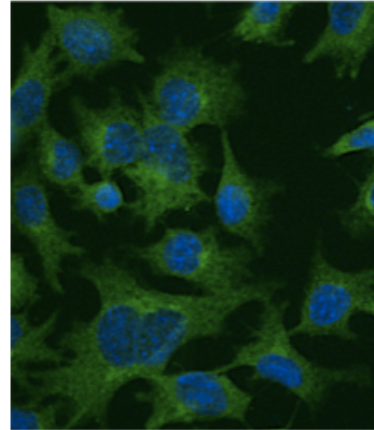
Special instructions: Avoid freeze/thaw cycles.

References:

Cai Y, Postnikova EN, Bernbaum JG, et al. *J Virol*. 2015 Jan 1;89(1):844-56.



Endogenous CLTC detected with AB0059 at 1/500 dilution; lysate at 100 µg per lane and rabbit polyclonal to goat IgG (HRP) at 1/10,000 dilution.



Immunofluorescence – anti-CLTC Ab (AB0059) – Membrane Vesicle Marker in Hepa1-6 cells at 1/50 dilution; cells were fixed with methanol.

For research use only, not for diagnostic use

SICGEN's Proprietary Immunogen Policy

In order to produce high specific antibodies SICGEN has invested a lot of time and effort into selecting immunogen sequences. SICGEN has decided to protect this information by not publishing it on the website. However, these sequences are available on request.